



essence
by MainVue



ESSENCE BY MAINVUE

Your Dream Home, an All New Reality.



You'll find it in the true craftsmanship and timeless quality.

You'll feel it in the modern, stylish open floor plans.

You'll see it in the details, straight lines and contemporary designs.

In Essence, you'll know you're home.

MainVue Homes is proud to introduce an innovative series of thoughtful home designs that boasts a modern aesthetic at a breakthrough price.



***Contemporary style homes
designed for easy living.***

ESSENCE BY MAINVUE

Thoughtful Designs, at a Breakthrough Price.

Figuratively and literally, The Essence Collection by MainVue Homes is opening doors to a contemporary lifestyle while shifting to a lighter side of pricing. There's a strong emphasis on thoughtful designs. Meanwhile, by mirroring the same customer care that defines MainVue, Essence designs capture a new era of attainability.

This collection has likely already commanded your attention: statement-making clear glass Entry Doors; functional Bonus Rooms; and convenient Home Offices.

Swoon over wide-plank timber-look flooring in some spaces, while plush carpeting in Primary and Secondary Bedrooms and Luxury Vinyl Tile flooring in Bathrooms delights bare feet.

In the Kitchen, built-right, soft-close European frameless cabinets with Satin Nickel tabs enhance the

appealing Stainless Steel KitchenAid appliances and attractive Quartz countertops.

Throughout these thoughtful home designs – each with its own structural options – featuring four unique interior and another four stylish exterior color schemes, The Essence Collection by MainVue has crafted your dream home with a new reality: an era of stylish and easy living.

Discover the Essence of MainVue at
www.EssenceByMainVue.com





MAINVUE[®]
HOMES

INTRODUCING MAINVUE HOMES

The Difference is Everywhere.

From each angle and every perspective, MainVue Homes is raising the bar on home designs and living.

Proven by its practices and dynamic by design, this trusted combination is just part of the reason MainVue Homes is a worldwide leader in premiere residential design and construction.

As part of the internationally respected Henley Properties Group, we are a proud partner of the Sumitomo Forestry Group, a venerable corporation with its own rich 320-plus-year heritage. Our global relationship now builds homes for more than 22,000 homebuyers a year. This success spans from Australia to Japan and – most recently – to the United States.

Using our international buying power, MainVue assures customers access to grand homes with superb value, further enhanced by exceptional – and occasionally unexpected – designer features. And we always remain true to our commitment: to

build bold, distinctive and definitively modern new homes that capture the true meaning of luxury. The fresh results? Luxury designs that are thoughtfully crafted with incredible value and chic designer features that are not only within reach, but offer our full selection of exquisite luxury inclusions included as standard.

But we know it's not just about feeling it – it's also about believing it, and when it comes to their ultimate and final selection of a home, discerning buyers know that their choice hinges on redefining luxury. It's why we set a new bar for excellence through innovative practices and dynamic designs. Redefining luxury is MainVue's mission. You can count on this from us.

To learn more about MainVue Homes, visit:
MainVueHomes.com

*Photo illustrating MainVue Homes product design.

***The Essence Kitchen,
your recipe for success.***



ESSENCE BY MAINVUE

The Essence Collection: A Palette of Perfection.

The Essence Collection by MainVue Homes lifts you from simply musing about a modern and stylish home to clearly envisioning what your thoughtfully designed new construction home can truly look, feel and live like.

Explore our first four perfect palette of plans and see how elevations, facades, possible adaptations and color schemes can create your dream home.

With breakthrough pricing, turning your dreams into your new reality is what The Essence Collection is all about.

To explore our collection further visit
EssenceByMainVue.com/Home-Designs

Nisqually	1,928 Square Feet, 3 Bedrooms, 2.5 Baths, 2 Car Garage, Bonus Room
Salish	2,245 Square Feet, 4 Bedrooms, 2.5 Baths, 2 Car Garage, Bonus Room
Meridian	2,522 Square Feet, 4 Bedrooms, 2.5 Baths, 2 Car Garage, Bonus Room, Home Office
Skagit	2,634 Square Feet, 4 Bedrooms, 2.5 Baths, 2 Car Garage, Bonus Room, Home Office





Nisqually

On Display at Redstone at Whiskey Ridge

1,928 Square Feet, 3 Bedrooms, 2.5 Bathrooms, 2 Car Garage, Bonus Room, Covered Patio, Walk-in Pantry, Covered Front Porch, Walk-in Closet at Primary Bedroom, Garage Storage

Chart Your New Course

There's hardly any reason to plug The Nisqually into your vehicle's navigation app – because this contemporary three-bedroom plan is almost a way-finder all on its own.

With exactly the right modern touches, this two-story design in The Essence Collection by MainVue makes daily living almost effortless.

Dynamic entertaining takes center-stage in the juxtaposed Dining and Living Rooms surrounding the sleek Kitchen. While connected in quintessential Essence open-flow style across the wide-plank timber-look flooring, these off-set zones allow homeowners to enhance the separate character of the two.

Space is designated for an optional Living Room fireplace, but the real burn belongs to the Nisqually's Kitchen where Stainless Steel KitchenAid appliances invite you to whip up a culinary storm. Impress guests by displaying all serving buffets atop the sophisticated Quartz-capped Kitchen island. Everything for knock-out parties can be tucked in the Walk-In Pantry and behind the rich European style cabinets with soft-close features and lovely Satin Nickel tabs.

These same handles and pulls accent the Primary Bath upstairs. Contemporary Chrome finish bath fixtures bedazzle the dual Kohler vessel sinks atop the Quartz counters. Luxury Vinyl Tile flooring leads to the European cabinetry and the relaxing shower and tub. Bath amenities are nestled aside the Primary Bedroom, which boasts a large Walk-in Closet. Secondary bedrooms, meanwhile, are set down the hallway with a view of the driveway leading to the Two-Car Garage. Do-it-yourselfers will like the extra Garage space carved out for storage or a workbench.

For morning workouts, evening wind-downs, or mid-day toy times, the final corner of the upper level is dedicated to your Bonus Room. The Utility Room's laundry set is nearby – so busy homeowners can fold a few towels while binge-watching a favorite TV series. Prefer a fourth bedroom? MainVue can modify this plan for you by transforming your Bonus Room into the extra bedroom needed.

Map or no map, when you set your sights on the Nisqually it's easy to find what Essence by MainVue can mean for your lifestyle.

Nisqually



1,928 Square Feet



3 Bedrooms



2.5 Bathrooms



2 Car Garage

FEATURED SPACES:

- Bonus Room
- Covered Patio
- Walk-in Pantry
- Covered Front Porch
- Walk-in Closet in Primary Bedroom
- Garage Storage

AVAILABLE OPTIONS:

- Bedroom 4 in lieu of Bonus Room

Entry Foyer highlighted by a clear glass entry door and wide-plank timber-look flooring

Enclosed, Walk-in Pantry with white wire shelving

Covered Patio with access to Dining area via a modern clear glass door

Kitchen features Quartz countertops, Stainless Steel KitchenAid appliances and soft-close European style frameless cabinets

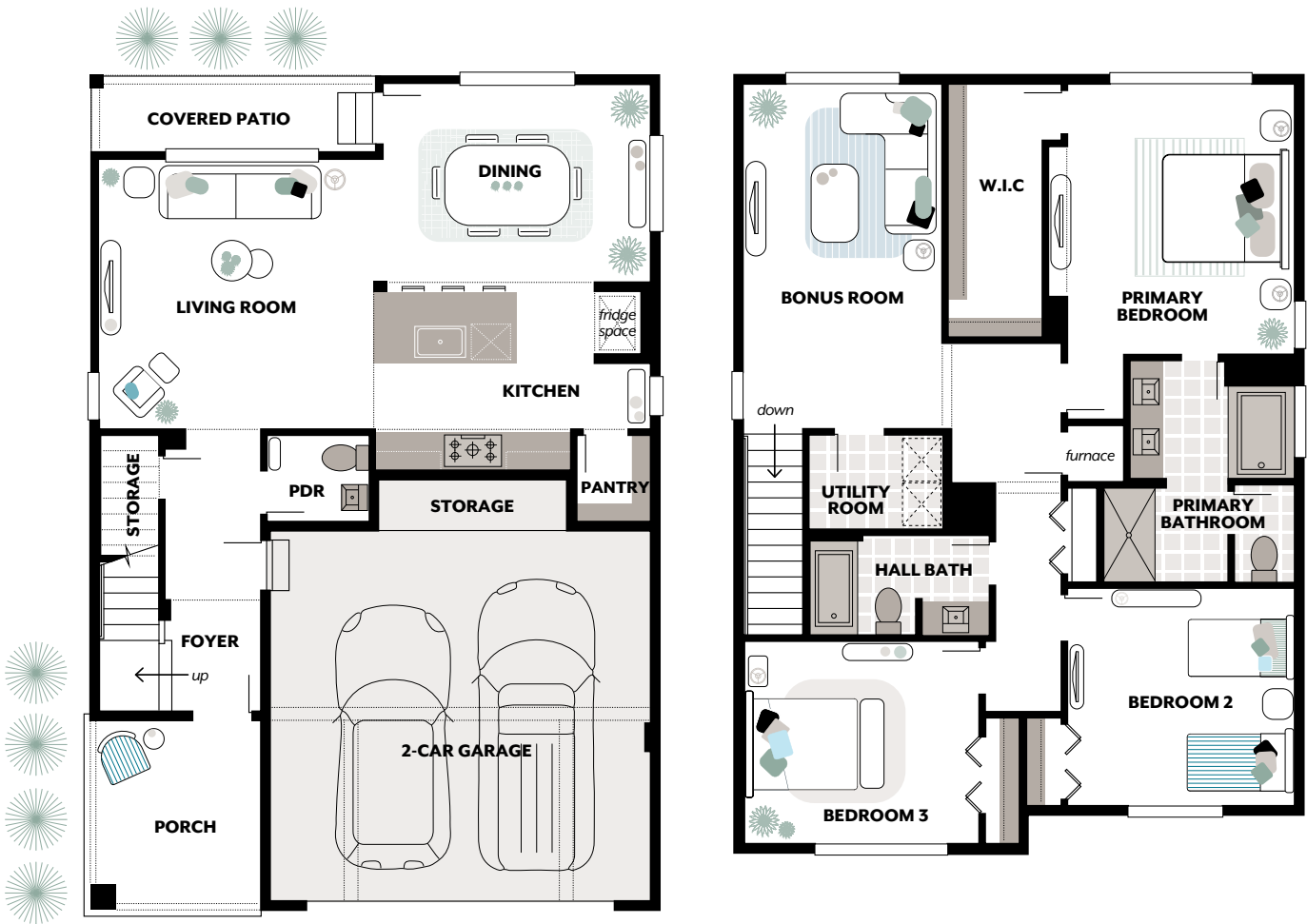
Built-in wall niche, picture window and an

expansive Walk-in Closet highlight the Primary Bedroom

Primary Bathroom includes 70” tall semi-frameless walk-in shower, dual vanity and drop-in soaking tub

Conveniently placed Bonus Room with soft, plush carpeting

Energy-efficient lighting, appliances, and heating and cooling systems help lower utility costs and improve indoor air quality



Riverbed Sunrise, D Facade



Sky Sunrise, GF Facade



Meadow Sunrise, GH Facade

* The finished square footage areas provided are calculated based on ANSI Z765-2013 standards as commissioned by the National Association of Home Builders (NAHB). Finished square footage calculations are typically made based on plan dimensions only. Finished square footages vary based on elevation styles, plan options, final home design, variances that arise during construction and other factors. Plans, square footage and house availability may vary by community and are subject to change. Buyers are responsible for verifying the area of their homes. Home prices are not based on, and MainVue cannot assure, final home square footage. Photography is for illustrative purposes and should be used as a guide.



Salish

2,245 Square Feet, 4 Bedrooms, 2.5 Bathrooms, 2 Car Garage, Bonus Room, Covered Patio, Enclosed Pantry, Covered Front Porch, Walk-in Closet at Primary Bedroom

Fever Pitch

Within the rhythm of timeless style and smart design, the four-bedroom Salish plan offers upbeat quality for homebuyers seeking breakthrough pricing.

The Salish showcases the style of fashionable function found throughout The Essence Collection paired with quality craftsmanship and modern touches.

Upstairs, the beautiful Primary Bedroom at the rear of the home enjoys a highly satisfying Walk-in Closet with a three-wall wardrobe space. Select your comfiest post-bath lounge wear before you step into the private Primary Bath with its refreshing shower and relaxing tub. You'll never tire of the soft-close European style cabinets, boasting Satin Nickel knobs and pulls, and the Chrome-finish hardware gleaming above the two Kohler vessel sinks and Quartz-topped vanity.

Down the hall, past the convenient Utility and Laundry Room, three Secondary Bedrooms and a Hall Bath, the large Bonus Room is nimble and ready for morning fitness routines,


after-hours gaming nights and more. Need a fifth bedroom instead? Essence by MainVue can transform your Bonus Room into your extra Bedroom.


Whether it's weekend waffles or weekday smoothies, charge your day in the contemporary main floor Kitchen. Simple appliances can be stored behind the Pantry door so that you can maximize your glamorous Quartz-topped countertops and Kitchen island and Stainless Steel KitchenAid appliances.


As your guests arrive through the Foyer, its wide-plank, timber-look flooring channels them past a discreet door to the Two-Car Garage, and past the modern architectural wall detail before revealing the chic Dining Room. This syncs with a medley of space shared with Kitchen and comfortable Living Room, with its subtle clear glass door to the Covered Patio. Outside, native plants grace the fully landscaped front and fully-fenced rear yards.


With all the right convenience and brio, the Salish home design is ready to add some excitement and make your lifestyle pitch perfect.

Salish


2,245 Square Feet


4 Bedrooms


2.5 Bathrooms


2 Car Garage

SPACES:

Bonus Room

Covered Patio

Enclosed Pantry

Covered Front Porch

Walk-in Closet at Primary Bedroom

Modern, open concept Living, Kitchen and Dining area with added ceiling height variation and wall architectural detail

Thoughtfully placed upper floor Bonus Room

Primary Suite includes large Walk-in Closet, dual vanity with vessel style sinks and Chrome faucets, semi-frameless shower and drop in soaking tub

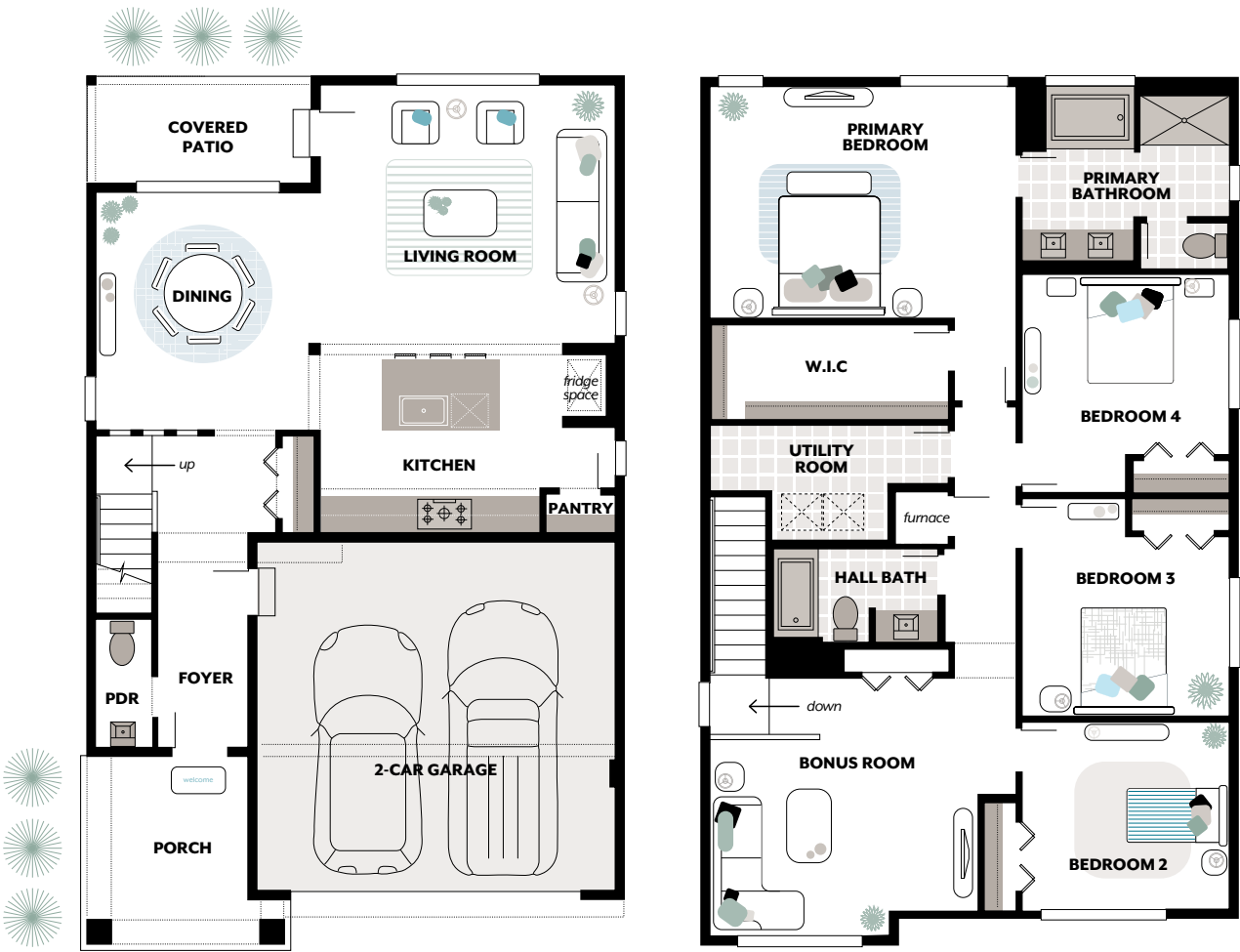
Expansive, centrally placed Utility Room on upper floor with Luxury Vinyl Tile flooring

Entertainment-ready Kitchen with enclosed Pantry, Quartz countertops, 40” soft-close upper cabinets, Stainless Steel KitchenAid appliances and a sleek Chrome faucet

Covered Patio with direct access via a clear glass door from Living Room

Main floor Powder Room off Foyer with designer lighting and pedestal-style sink

Energy-efficient lighting, appliances, and heating and cooling systems help lower utility costs and improve indoor air quality



Meadow Nightfall, D Facade



Stormwake Nightfall, E Facade



Aurora Sunrise, GA Facade

* The finished square footage areas provided are calculated based on ANSI Z765-2013 standards as commissioned by the National Association of Home Builders (NAHB). Finished square footage calculations are typically made based on plan dimensions only. Finished square footages vary based on elevation styles, plan options, final home design, variances that arise during construction and other factors. Plans, square footage and house availability may vary by community and are subject to change. Buyers are responsible for verifying the area of their homes. Home prices are not based on, and MainVue cannot assure, final home square footage. Photography is for illustrative purposes and should be used as a guide.



Meridian

2,522 Square Feet, 4 Bedrooms, 2.5 Bathrooms, 2 Car Garage, Home Office, Bonus Room, Walk-in Pantry, Covered Front Porch, Rear Patio, Garage Storage, Walk-in Closet at Primary Bedroom

Mastering the Possibilities

True to name, The Meridian hits the peak for both its thoughtful four-bedroom design and countless flexible possibilities.

It's just one element of commitment to a new era of attainability and breakthrough styling throughout The Essence Collection by Main-Vue. With the Meridian, contemporary vibes start with crisp, clean lines at the Covered Porch through the modern clear glass entry door to the open-feel Foyer.

Deeper in the home, wide-plank, timber-look flooring links the Home Office with the Kitchen. It's convenient for brewing a second cup of coffee between morning meetings. Not the work-from-home type? This mostly-enclosed Home Office can be stylized into a Media Room, tripling down as a homework, music or gaming hub – or all three. Another option: enclose this space and make it a lower floor Guest Room.

Boost your hospitality groove, meanwhile, around the Quartz-crowned Kitchen island. Behind the Walk-in Pantry door, small appliances can be stored away so the Kitchen's striking European style frameless cabinets, dazzling Quartz counters and large Stainless Steel KitchenAid appliances can be on full

display. It makes a savvy pairing with the adjacent Living Room with your option to install a cozy fireplace.


Around the corner, the Dining Room creates a defined entertainment-ready space which opens to a fenced and landscaped backyard.


Cozy doesn't stop here. By day, the upstairs Bonus Room is ideal for serene stretching or yoga routines; by evening, it's waiting for pillows, blankets and movie night for couples or families. When the kids start to drift off, shuffle them off to sleep in any of three nearby Secondary Bedrooms. Hint: larger families may opt to modify the Bonus Room into a fifth Bedroom.


The Primary Bedroom, meanwhile, is reserved at the other end of the hall with a large 180-degree Walk-in Closet. Pull on a robe and open the door into the privacy of the Primary Bath with Luxury Vinyl Tile flooring. Before showering or while the tub fills, finish your skin care routine at the Kohler dual vessel sinks with Chrome-finish hardware atop the Quartz-crowned counter.


With the boundless flexibility in The Meridian, your new reality is one of countless possibilities.

Meridian


2,522 Square Feet


4 Bedrooms


2.5 Bathrooms


2 Car Garage

SPACES:

- Home Office
- Bonus Room
- Walk-in Pantry
- Covered Front Porch
- Rear Patio
- Garage Storage
- Walk-in Closet at Primary Bedroom

AVAILABLE OPTIONS:

- Guest Room in lieu of Home Office
- Bedroom 5 in lieu of Bonus Room

Main floor Home Office located near Kitchen and Living areas with timber-look flooring and architectural wall detail for added style

Patio space accessed via a sliding glass door direct from Dining and Living areas

Supersized Kitchen island topped with Quartz and deep overhang for plenty of comfortable seating

Stainless Steel KitchenAid appliances, Chrome faucet over single bowl sink and Walk-in Pantry with white wire shelving complete the Kitchen

Centrally placed upper floor Bonus Room with soft carpeting and illuminated by a brushed Nickel finish and alabaster glass light fixture

Primary Bedroom placed for privacy with large Walk-in Closet including 3 sets of white wire shelving

Extra Linen Closet, drop-in soaking tub, soft designer up-lighting, dual vanities and walk-in 70” shower in Primary Bathroom

Energy-efficient lighting, appliances, and heating and cooling systems help lower utility costs and improve indoor air quality



Oceanbreak Nightfall, E Facade



Aurora Nightfall, H Facade



Sandalwood Sunrise, GH Facade

* The finished square footage areas provided are calculated based on ANSI Z765-2013 standards as commissioned by the National Association of Home Builders (NAHB). Finished square footage calculations are typically made based on plan dimensions only. Finished square footages vary based on elevation styles, plan options, final home design, variances that arise during construction and other factors. Plans, square footage and house availability may vary by community and are subject to change. Buyers are responsible for verifying the area of their homes. Home prices are not based on, and MainVue cannot assure, final home square footage. Photography is for illustrative purposes and should be used as a guide.



Skagit

On Display at Redstone at Whiskey Ridge

2,634 Square Feet, 4 Bedrooms, 2.5 Bathrooms, 2 Car Garage, Home Office, Bonus Room, Walk-in Pantry, Covered Patio, Covered Front Porch, Garage Storage, Walk-in Closet at Primary Bedroom

When “Eureka” Strikes

Eager for something new and modern? From the ever-ready main level Kitchen to the open Bonus Room upstairs, the “eureka!” factors in The Salish will fill your home buying dream bucket.

With the largest design in The Essence Collection by MainVue, The Skagit crafts latitude into how best to use space: turn the centrally located upstairs Bonus Room into a fifth Bedroom? Fully enclose the semi-sequestered main level Home Office? Turn the Home Office into a Guest Room with a three-quarter bath? Essence by MainVue has you covered.

With or without adaptations, sweet surprises here capture attention.

Feed friends and family all their menu favorites from the generous enclosed Walk-in Pantry framed by rich European style cabinets and sophisticated Stainless Steel KitchenAid appliances. Listen as guests cheer for buffets arranged on the Quartz-capped Kitchen island. Then applaud yourself when the spritz from the Chrome pull-down sink faucet making cleanup a breeze.

Then there's the discreet door from the owners' Garage to the modern wide-plank, timber-looking flooring linked to the Foyer

hallway. It leads to an open-flow Living Room and Dining Room. This semi-sleuth access means you can arrive in the entertainment zone with a surprise gift you've been hiding in the Two-Car Garage - or inside the fashionable under-the-staircase closet - and be the hit of the party.

Meanwhile, the already professional Home Office is tucked away from this high energy for privacy.

At the same time, privacy and respite combine perfectly in the upstairs Primary Bedroom and Bath. Catch your breath each time you enter the large Walk-in Closet and survey all its space for clothes and more. It's just off the stylish bath retreat featuring Luxury Vinyl-Tile Flooring, a dazzling Quartz-crowned dual-Kohler sink vanity and separate built-in tub and shower.

On the upper level's other stretch, three Secondary Bedrooms enjoy a shared Bathroom. For bonus laundry space and convenience, it's a quick turn into the large Utility Room and steps away from freestyle family time in the Bonus Room.

Like these and others, sweet surprises and exceptional “eureka” features found only in The Skagit are modern, intentional and built right for your effortless style.

Skagit


2,634 Square Feet


4 Bedrooms


2.5 Bathrooms


2 Car Garage

SPACES:

- Home Office
- Bonus Room
- Walk-in Pantry
- Covered Patio
- Covered Front Porch
- Garage Storage
- Walk-in Closet at Primary Bedroom

AVAILABLE OPTIONS:

Bedroom 5 in lieu of Bonus Room

Guest Room with 3/4 Bath in lieu of Home Office and PDR

Thoughtfully placed Kitchen with open-flow to Dining area and access to an extended Covered Patio via a clear glass door

Entertainment-ready Kitchen island topped with Quartz, a Walk-in Pantry and KitchenAid appliance package

Main floor Home Office designed for privacy and convenience with timber-look flooring and side-by-side windows for added light

Open upper floor Bonus Room centrally located for maximum flexibility

Wide, double door entry at the Primary Bathroom featuring Luxury Vinyl Tile flooring, dual Kohler vanity sinks, semi-frameless shower, drop-in soaking tub and large Walk-in Closet

Savvy storage spaces found in Garage and under stairs on main floor

Large Utility Room on upper floor with durable Luxury Vinyl Tile flooring

Energy-efficient lighting, appliances, and heating and cooling systems help lower utility costs and improve indoor air quality



Sky Nightfall, GA Facade

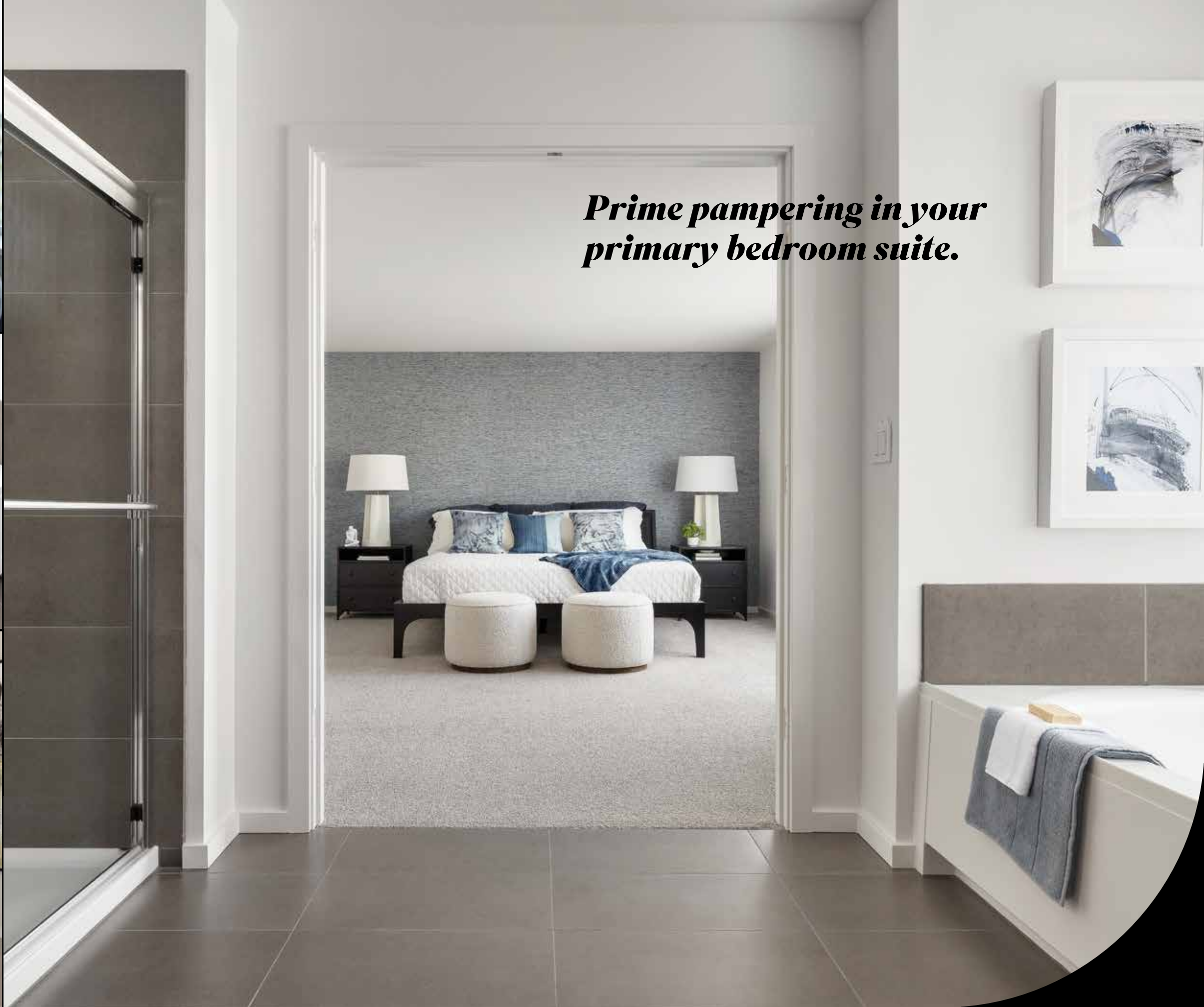


Savanna Sunrise, GF Facade



Riverbed Nightfall, H Facade

* The finished square footage areas provided are calculated based on ANSI Z765-2013 standards as commissioned by the National Association of Home Builders (NAHB). Finished square footage calculations are typically made based on plan dimensions only. Finished square footages vary based on elevation styles, plan options, final home design, variances that arise during construction and other factors. Plans, square footage and house availability may vary by community and are subject to change. Buyers are responsible for verifying the area of their homes. Home prices are not based on, and MainVue cannot assure, final home square footage. Photography is for illustrative purposes and should be used as a guide.



ESSENCE BY MAINVUE

Beautiful Inclusions in Every Essence Home.

In Essence, we value important essentials. It's why we design essentials into contemporary and beautiful inclusions.

Within The Essence Collection by MainVue Homes, craftsmanship and visual appeal are one in the same. Simultaneously, Essence choices meet homebuyers at an attainability place that ensures your comfort is right at home with your pricing sweet spot.

It's a new reality: an Essence era of stylish, easy living crafted with four savvy home designs flush with multiple interior color palettes and yet another four stylish exterior color scheme variations.

Modern, stylish open floor plans are a given within The Essence Collection. After that, it boils down to our particulars and specifics. And it starts from within.

Your Essence Kitchen will always be a recipe for success and modern aesthetics because Stainless Steel KitchenAid appliances complement Quartz-

topped service islands and countertops. In the Bathrooms, Luxury Vinyl Tile flooring enhances the oasis-like inclusions assuring primetime pampering. Authentically beautiful wide-plank timber-look flooring, meanwhile, adds a gracious touch for main-level living areas. And Essence coziness is built into each home with extra-efficient energy systems that warm your shower, heat every room and cast nuanced lighting throughout.

Inclusions extend outside, too, where all-season hardscapes are enhanced by native plantings, reliable roofing and attractive siding on Northwest craftsman to modern stylings.

For smart designs that are built right, The Essence Collection by MainVue works to make sure essentials are inclusions. There's no reason not to make all of these yours.

Discover Essence Inclusions at
www.EssenceByMainVue.com/Inclusions



Kitchen Inclusions



APPLIANCES
Stainless Steel KitchenAid Microwave and Hood with 1000-watt Microwave hood and powerful ventilation fan

30" KitchenAid Gas Range with Even-Heat™ True Convection oven technology, blue enamel interior finish and 5 concealed burners

Large capacity KitchenAid Dishwasher with third level, easy glide rack and easy access control panel

CABINETRY
European style, soft-close frameless cabinetry with discrete hinges, Satin Nickle pulls and extended 40" tall upper cabinets

SURFACES
Heat, scratch and stain-resistant non-porous Quartz countertop and Kitchen island surfaces

4" Slab backsplash lining Kitchen countertop

ISLAND
Polished Quartz capping the Kitchen island with deep overhang and plenty of under counter storage

SINK
Large, single bowl Sink in anti-bacterial Stainless Steel finish

Sleek, Chrome Kohler Kitchen faucet with adjustable spray head, ProMotion® technology and temperature memory

Powerful 1/2 horsepower garbage disposal

STORAGE
Enclosed Pantry spaces with 4 rows of white wire mesh shelving*

LIGHTING
Energy Efficient LED flush mount lighting carefully placed throughout your open-flow Kitchen

Alabaster glass fixtures with brushed Nickel finish in Pantry spaces



Whole Home Inclusions

FLOORING
Wide-plank, timber-look flooring throughout main floor featuring a surface that's easy to clean, and resistant to stains, dents, fading and scratches

Plush carpeting in Bedrooms, Bonus Rooms, Stairs and Hallways with high density, cushioned padding thoughtfully coordinated with your home's color scheme

Scratch-and stain-resistant Luxury Vinyl Tile flooring for long lasting durability found in the convenient Utility Room, Primary Bathroom and Hall Bathroom

COLOR SCHEMES
Select from four designer color schemes carefully crafted by the MainVue Homes design team



LIGHTING
Energy efficient flush mount recessed can lighting throughout Kitchen, Living Room, Dining area, Foyer, Hallways and Primary Bathroom

Alabaster glass lighting fixture with brushed Nickel finish in Home Office, Bonus Room, Walk-in Closet, Utility Room, Pantry and Storage closet under stairs

DOORS
Clear glass door with fiberglass surround and Chrome deadbolt handle set at entry Foyer and Patio*

Stylish, white solid core interior doors throughout with raised two-panel design and Chrome handles and hardware

FINISHES
Modern finishes throughout each Essence home including square edges and walls finished with light fog and dash textures

STORAGE AND UTILITY SPACES:
Find storage convenience in Walk-in Closets, Linen Closets, Coat Closets, Kitchen Pantry and Utility Room with variations of white mesh wire shelving



* Inclusions subject to change per community and per home design. Ask a sales consultant for detailed information on home specific Inclusions.

Primary Bathroom Inclusions



SURFACES

Heat, scratch and stain-resistant non-porous Quartz countertop capping off the expansive double vanity

SINKS AND FAUCETS

Kohler rectangular vessel style sinks with rounded edges are low maintenance and easy to keep clean

Chrome finish, single handle Kohler faucets easily control water flow and temperature

CABINETRY

European style, soft-close frameless cabinetry with discrete Chrome finish hinges and Satin Nickle pulls

MIRROR

Frameless 42” high sheet mirror rises from countertop to vanity lighting set

LIGHTING

Soft, designer vanity lighting features four lights in each fixture with Chrome finish and opal-etched glass

FLOORING

Stain, scratch and wear-resistant Luxury Vinyl Tile flooring selected for each color scheme and designed into a modern 12” x 24” large format pattern for a luxury look

SHOWER

White finish, semi-frameless 70” tall enclosed shower with sliding door, Chrome finish towel bar and integrated shelving

Kohler Sterling Medley shower faucet set in Chrome finish

SOAKING TUB

60” drop-in soaking tub with stylish tile backsplash, Moen wall-mounted Chrome finish faucet, durable Vikrell material and comfortable armrests lining each side

TOILET

Sturdy and reliable Gerber Maxwell two-piece elongated toilet with Chrome finish tank lever



Secondary Bathroom Inclusions



HALL BATHROOMS

SURFACES

Quartz countertop at vanity featuring heat, scratch and stain-resistant qualities

SINK AND FAUCET

Contemporary round, drop-in sinks that are low-maintenance and easy-to-clean

Kohler Sterling Medley Chrome faucet set with easy control non-porous finish for fighting stains

CABINETRY

Soft-close, European style frameless cabinetry with discrete Chrome finish hinges and Satin Nickle pulls

MIRROR

Frameless 42” high sheet mirror rises from countertop to vanity lighting set

LIGHTING

Soft, designer vanity lighting features three lights in each fixture with Chrome finish and opal-etched glass

COMBINATION TUB SHOWER

Tub shower combination in a brilliant white finish features convenient built-in shelving, Chrome finish hardware for precise water control and crafted with durable Vikrell material that’s easy-to-clean

FLOORING

Luxury Vinyl Tile flooring that is stain, scratch and wear-resistant, and designed into a modern 12” x 24” large format pattern for a luxury look



POWDER ROOMS

SINK AND FAUCET

Pedestal-style sink in classic white and round design with Kohler Sterling Medley faucet in Chrome finish

FLOORING

Wide-plank, timber look flooring throughout main floor featuring a surface that’s easy to clean, and resistant to stains, dents, fading and scratches

LIGHTING

Soft designer, pendant style lighting fixture with Opal-etched glass

MIRROR

61” tall rectangular sheet mirror perfectly centered over sink

Exterior Inclusions



COVERED PATIO*

Step onto your Covered Patio through a sleek and modern clear glass door with fiberglass surround complete with keyed Chrome handle set

COLOR SCHEMES

Select from a palette of 4 color schemes selected by MainVue Homes' professional design team

Expand options even further by considering versions of Sunrise and Nightfall variations applied to all 4 exterior color schemes

LIGHTING

Stylish, black finish, wall mounted light with frosted glass inserts illuminates the front of your Essence home

Light up your Patio space with a wall mounted, glass cylinder light with black finish

LANDSCAPING

Leading-edge landscaping package includes carefully selected native plants ready for all seasons in the Pacific Northwest

FENCING

6' stained Cedar fence frames the side and rear yard with pedestrian gate and built for durability and longevity

GARAGE DOORS

Contemporary garage doors feature a 4-panel Ranch design with added accent windows allowing a flood of natural light into your two-car garage

Powerful 1/2 horsepower chain-drive opener including two remote transmitters

SIDING AND ROOFING

Versatile siding styles create unforgettable curb appeal and designed to be long-lasting in a smooth finish

Weather resilient roofing materials built with fiberglass mat, built-in algae resistance and exceptional bonding applied

DRIVEWAYS AND LEADWALKS

Durable, non-skid, exposed aggregated designed into driveways, walkways and Front Porch landing



Energy Efficiency Inclusions



ENERGY SAVING APPLIANCES

Enhance your good taste with an array of KitchenAid energy-efficient appliances – from the dishwasher, gas range, and microwave/hood combination

FURNACE

Start planning your cozy moments now with this extra-efficient electric furnace and heat pump. The furnace is located inside the home in a centralized conditioned and heated space

HEAT PUMP

Look no further for one of the “greenest” ways to heat and cool your home. The dual heating and cooling capabilities of your high efficiency Essence heat pump system are powered by renewable energy

PROGRAMMABLE THERMOSTAT

Precisely control indoor temperatures and humidity for customized-to-you comfort and energy efficiency with a programmable digital thermostat connected to the furnace and heat pump

HYBRID ELECTRIC WATER HEATER

Boast a bit about your ENERGY STAR rated water heater. It's four times more efficient than a standard electric tank and is ideally sized for your home to maximize efficiency

INSULATION

Stabilize and maintain a comfortable whole-home temperature with R49 blown fiberglass attic insulation, and R21 fiberglass batt insulation in exterior walls

LED LIGHTING

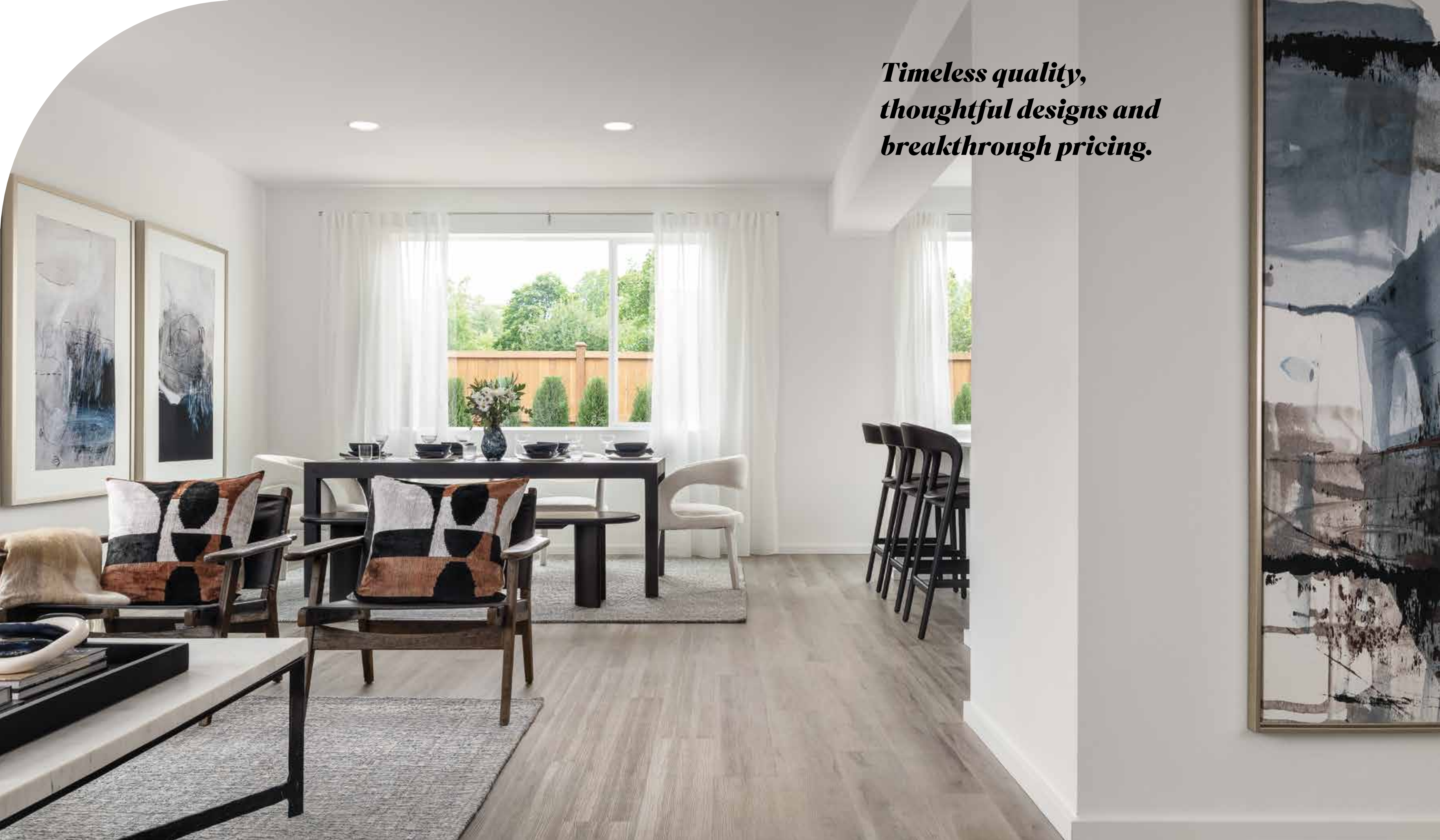
Maximize broad and precise lighting while decreasing energy usage with LED lights intentionally located throughout your Essence home

STRATEGIC WINDOWS

Earn an entirely new point of view when strategically placed windows – engineered for maximum efficiency – bring on artistry and natural light. Their dual-glazed, low E-glass makeup dramatically improves lighting while reducing heating and cooling costs

Ask us about all inclusions in your new Essence home.

***Timeless quality,
thoughtful designs and
breakthrough pricing.***





ESSENCE BY MAINVUE

Interior Color Schemes Selected by Professionals.

Naturally calm. Organically cool. Atmospherically powerful. By tapping into the broad interior color palette choices within The Essence Collection by MainVue, your home can whip up energy all on its own.

That's because our colors are compelling – and it's not by chance. It's because our professional designers curated four distinctive and timeless shades, tints and hues intentionally selected to enhance both modern and classic feels.

From mood lifting and spirit boosting to relaxing and restorative, the wall-to-wall chroma borrows from Mother Nature on its path to style.

Kindled by dark gray accents and the repose of light warm wood tones, **Stormwake** projects strength while icy grey cool Quartz finishes whip up like ocean white-caps. **The results: bold.**

Like the sweet heat of an enticing spice collection, **Sandalwood** infuses tones of va-

nilla in cabinetry, light cinnamon highlights in flooring and black spice top off features to satiate an appetite for sophistication. **The looks: definitely dynamic.**

Smooth and sedate, matte white and graphite work in tandem to partner with undulating warm gray flooring striations to paint the serenity of clouds in the **Sky** color scheme. **The forecast: sublime.**

Evocative of a gently rolling white-capped surf against a strong gray breakwater, **Oceanbreak** is equal parts light in cabinetry and dark in flooring. **The outcome: chroma brilliance.**

With natural colors offered through The Essence Collection by MainVue, we want your innate spirit to shine.

For tools to help you pick your favorite scheme visit EssenceByMainVue.com/Color-Schemes

Oceanbreak



Sky



Sandalwood



Stormwake



***Spaces designed
for work, play and
pure relaxation.***





ESSENCE BY MAINVUE

**In Essence, you'll
know you're home.**

1.800.764.8171
www.EssenceByMainVue.com

