



MAINVUE[®]
HOMES

ELM
HOME DESIGN

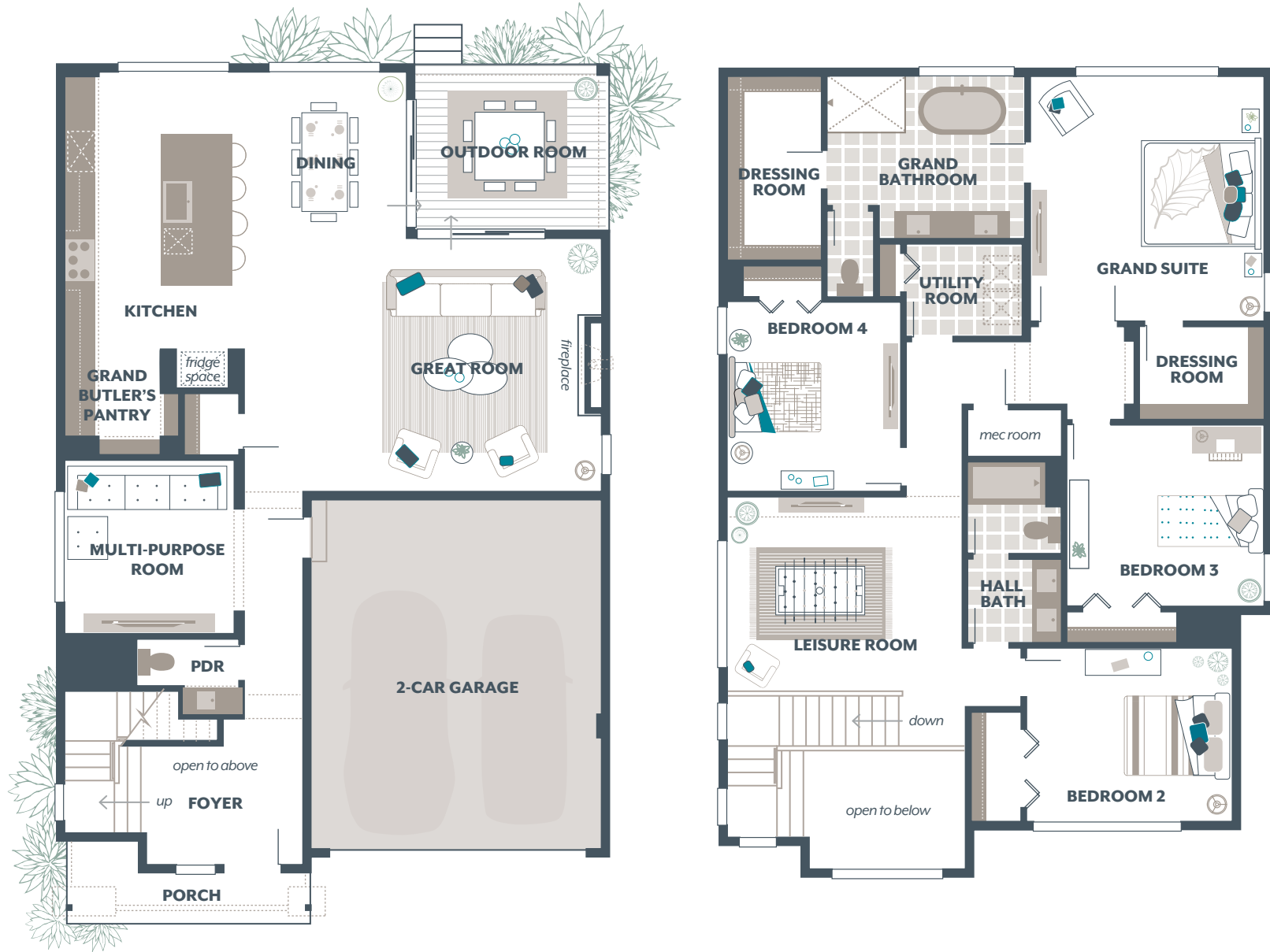
ELM 2,889 Square Feet / 4 🛏 / 2.5 🚿 / 2 🚗

Signature Outdoor Room
 Grand Butler's Pantry
 Multi-Purpose Room
 Leisure Room

Main Floor:	1,194
Upper Floor:	1,566
Outdoor Room:	129
TOTAL:	2,889
Garage:	425

AVAILABLE OPTIONS:

- Bedroom 3 Bathroom in lieu of Master Suite
- Dressing Room
- Bedroom 5 in lieu of Leisure Room



MAINVUEHOMES.COM

*The finished square footage areas provided are calculated based on ANSI Z765-2013 standards as commissioned by the National Association of Home Builders (NAHB). Total square footage used in marketing includes the outdoor room. Finished square footage calculations are typically made based on plan dimensions only. Finished square footages vary based on elevation styles, plan options, final home design, variances that arise during construction and other factors. Plans, square footage and house availability may vary by community and are subject to change. Buyers are responsible for verifying the area of their homes. Home prices are not based on, and MainVue cannot assure, final home square footage. Photography is for illustrative purposes and should be used as a guide.