



MAINVUE[®]
HOMES

JUNIPER
HOME DESIGN

JUNIPER

3,139 Square Feet / 4 🛏 / 2.5 🚿 / 2 🚗

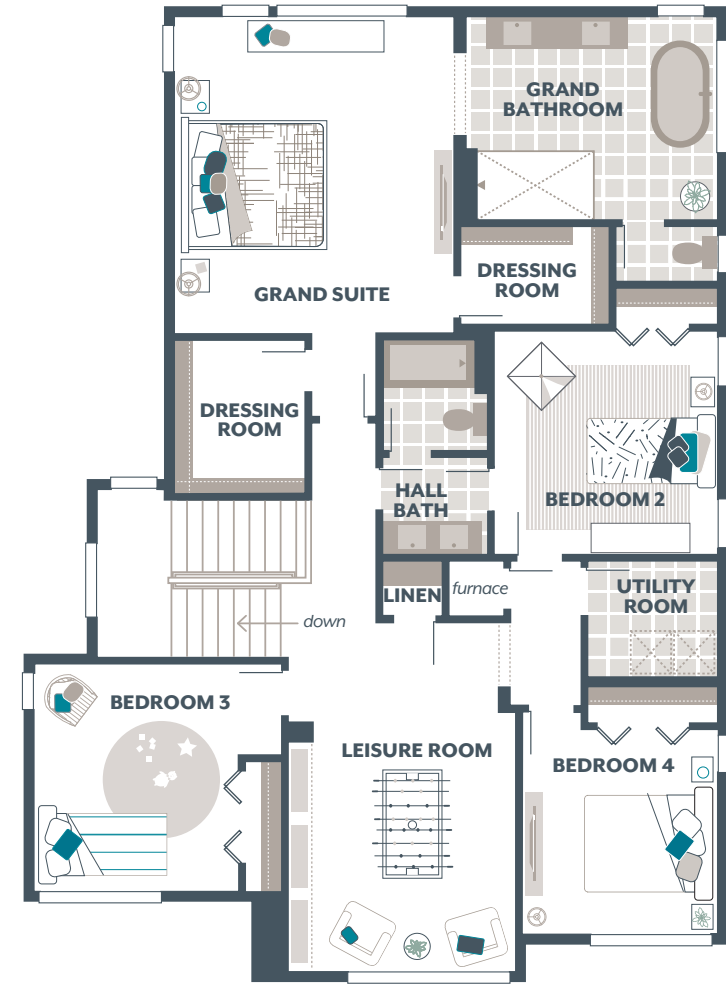
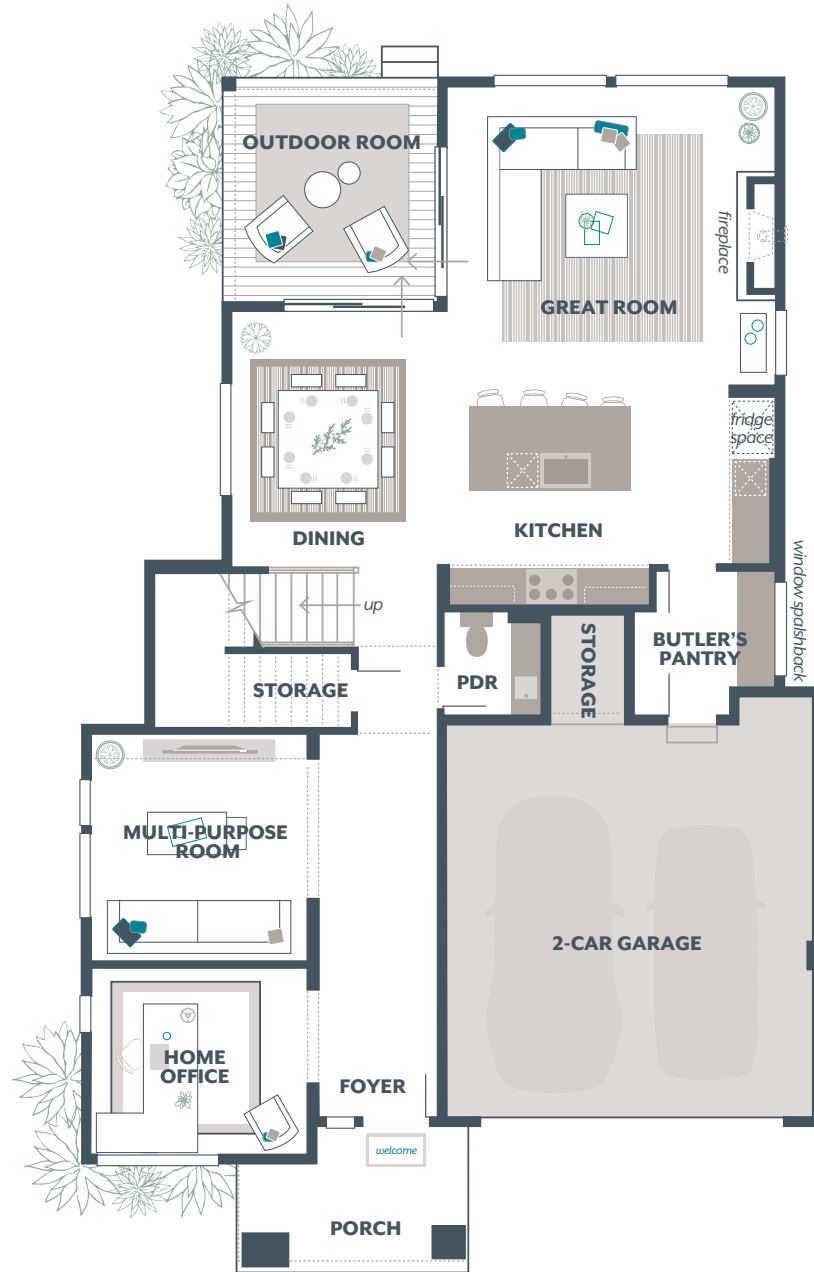
ON DISPLAY AT THE WORLD OF MODEL HOMES®

- Signature Outdoor Room
- Home Office
- Multi-Purpose Room
- Butler's Pantry
- Leisure Room
- Garage Storage

Main Floor:	1,349
Upper Floor:	1,652
Outdoor Room:	138
TOTAL:	3,139
Garage:	461

AVAILABLE OPTIONS:

- Guest Room with Ensuite in lieu of Home Office and Multi-Purpose Room
- Bedroom 2 Bathroom in lieu of Walk-In Closet
- Bedroom 5 in lieu of Leisure Room
- 3/4 Bath in lieu of Powder Room



MAINVUEHOMES.COM

*The finished square footage areas provided are calculated based on ANSI Z765-2013 standards as commissioned by the National Association of Home Builders (NAHB). Total square footage used in marketing includes the outdoor room. Finished square footage calculations are typically made based on plan dimensions only. Finished square footages vary based on elevation styles, plan options, final home design, variances that arise during construction and other factors. Plans, square footage and house availability may vary by community and are subject to change. Buyers are responsible for verifying the area of their homes. Home prices are not based on, and MainVue cannot assure, final home square footage. Photography is for illustrative purposes and should be used as a guide.