



MAINVUE<sup>®</sup>  
HOMES

THE TOWNHOME COLLECTION





MAINVUE TOWNHOMES

# The New Alternative to Luxury Living







## MAINVUE STORY

### The Difference is Everywhere

*From each angle and every perspective, MainVue Homes is raising the bar on home designs and living.*

Proven by its practices and dynamic by design, this trusted combination is just part of the reason MainVue Homes is a worldwide leader in premiere residential design and construction.

As part of the internationally respected Henley Properties Group, we are a proud partner of the Sumitomo Forestry Group, a venerable corporation with its own rich 320-plus-year heritage. Our global relationship now builds homes for more than 22,000 homebuyers a year. This success spans from Australia to Japan and – most recently – to the United States.

Using our international buying power, MainVue assures customers access to grand homes with superb value,

further enhanced by exceptional – and occasionally unexpected - designer features. And we always remain true to our commitment: to build bold, distinctive and definitively modern new homes that capture the true meaning of luxury. The fresh results? Luxury designs that are thoughtfully crafted with incredible value and chic designer features that are not only within reach, but offer our full selection of exquisite Luxury Inclusions included as standard.

But we know it's not just about feeling it – it's also about believing it, and when it comes to their ultimate and final selection of a home, discerning buyers know that their choice hinges on redefining luxury. It's why we set a new bar for excellence through innovative practices and dynamic designs. Redefining luxury is MainVue's mission. You can count on this from us.

To learn more about MainVue Homes, visit: **[MAINVUEHOMES.COM](https://mainvuehomes.com)**









# Introducing THE TOWNHOME COLLECTION

## *Elevating your lifestyle.*

It's design like you've never. Ever. Seen. Before.

With The Townhome Collection, MainVue Homes debuts a new and higher class of innovative three-level designs within reach of an elevated lifestyle many buyers aspire to.

All of our important original commitments to modern luxury remain. But MainVue Homes also recognizes that select buyers need something more for a bit less.

You've asked. We listened. It's why The Townhome Collection was crafted for solo and ensemble buyers who want the same contemporary open spaces and feelings of luxury that MainVue's larger selections are recognized for. With our same commitment to sophistication infused into its myriad of single-family homes, this collection synthesizes styles into townhome-sized spaces.

Is yours a single adult lifestyle that doesn't need all the space traditionally shown in MainVue's selections? Are you a young couple who like to entertain and you're ready for a first home purchase? Maybe you're a single buyer – with or without kids – who needs to work from home.

No two buyers are alike – and selections in The Townhome Collection reflect that. Discover how you can create your own signature while you explore our:

- Luxury Inclusions throughout all innovative Townhome designs

- Trend-setting, dedicated Lower-Level Home Office off the fashionable Foyer with access to 2-Car Garage and extra Storage space
- Modern open-flow Main-Level Living Room, Gourmet Kitchen and Dining areas with a Covered Deck accessed via sliding glass door
- Chic Gourmet Kitchen finishes including 3cm Quartz countertops, KitchenAid appliances and European frame-less cabinetry
- Luxurious Upper-Level Primary Suite Bathroom features including a 6-foot-high semi-frameless walk-in shower with specialized hand-held showerhead and dual vanities
- Two Secondary Bedrooms near a shared Bathroom and Laundry Room
- Noteworthy designs featuring 2-Car Garages – a rare feature for townhomes

For outside looks that excite, meanwhile, check out this collection's modern entry elements; designer color schemes, and equally durable and protective exterior materials.

Even before your first step into any of the choices within The Townhome Collection, the vibe is ready to elevate your lifestyle. Let it boost your energy, comfort and bliss, too.

With MainVue, The Townhome Collection is something you've never seen before. And you'll never forget it.

Availability, photo galleries and more at  
**[MAINVUEHOMES.COM/TOWNHOMES](https://mainvuehomes.com/townhomes)**







# LILAC

1,880 Square Feet, 3 Bedrooms, 2.5 Bathrooms, 2 Car Garage, Covered Front Porch, Home Office, Extra Storage, Covered Deck, Enclosed Pantry, Walk-in Closet in Primary Suite

## On Display at Tolt River Terrace

### *Dee. Lish. Us.*

Feast on fresh flavors of sophisticated style found throughout The Lilac – a three-level multi-course choice in The Townhome Collection.

Modern morsels of luxury are everywhere here – but earn top chef-like reviews in the Gourmet Kitchen. It's part of the Main-Level's open flow, connecting the Living Room to the Dining area. Whether it's a slippers-and-sweatpants kind of day or party-prep afternoon, attractive wide-plank timber-look flooring and well-paired Luxury Inclusions tie this continuity together.

It's where stunning European frameless, soft-close cabinetry dazzles with satin nickel handles and pulls. Not far from the energy-efficient KitchenAid Stainless Steel gas range, microwave and hood, the iridescent Kitchen Island sparkles with its 3cm Quartz surface. Even the sink's

stylish Grohe single-handle pull-out dual-spray faucet in sparkling Chrome exudes a combination of smart-and-stylish.

Nearby, but out of sight, the convenient Pantry is waiting for smaller appliances you prefer to store off your counters. It's a good spot for a blender that comes in handy for breakfast smoothies or pre-dinner cocktail.

Spirit your favorite beverage away, through the Dining Room, to the Covered Deck which pops out beyond sliding glass doors. Composite flooring complements a modern horizontal railing here for easy maintenance and strong street-appeal.

During wet weather months, deck cushions can be easily tucked away into the Main-Level Utility/Laundry Room or even larger Lower-Level Storage Room. The Lilac's spacious storage is just off its dedicated

Home Office – just around the corner from the clear, full-light front-entry door, and fashionable Foyer.

Another way to access this Lower-Level? Through the casual walk-through vestibule, with closet, leading from your personal Two-Car Garage.

The Upper-Level, meanwhile, hosts a quiet Primary Suite with spacious Walk-in Closet and luxurious Primary Bath at one end of The Lilac – and two Secondary Bedrooms with a shared Hall Bath at the other.

You already know you have great taste. Elevating your lifestyle in The Lilac just proves it to the rest of the world.



Lilac Unit



Lilac Unit



Home Details:

SIGNATURE SPACES:

- Covered Front Porch
- Home Office
- Extra Storage
- Covered Deck
- Enclosed Pantry
- Walk-in Closet in Primary Suite

AVAILABLE OPTIONS:

- Bedroom 4 with Bath in lieu of Home Office and Storage

Designer Features

Covered Front Porch Entry leading into an open Foyer with 9’ ceilings and wide-plank timber-look flooring

Private Home Office on the Lower-Floor with additional Storage space

Main-Floor boasts 9’ ceilings, wide-plank flooring, and a centralized Gourmet Kitchen that separates the Dining and Living areas

Gourmet Kitchen features 3cm Quartz counter-tops, KitchenAid appliances, European frameless cabinets, and an enclosed Pantry

Covered Deck with composite flooring and modern horizontal railing, accessible via a sliding glass door from the Dining Area

Expansive Primary Suite with an oversized picture window and a Walk-In Closet

Luxury Primary Bathroom includes a 72” high semi-frameless walk-in glass shower and dual vanities topped with 3cm Quartz

Energy efficient lighting, appliances and building materials used to help lower the cost of utilities and improve air quality

Kitchen



Primary Bathroom



Primary Bedroom



Living Room



Foyer



*\* The finished square footage areas provided are calculated based on ANSI Z765-2013 standards as commissioned by the National Association of Home Builders (NAHB). Finished square footage calculations are typically made based on plan dimensions only. Finished square footages vary based on elevation styles, plan options, final home design, variances that arise during construction and other factors. Plans, square footage and house availability may vary by community and are subject to change. Buyers are responsible for verifying the area of their homes. Home prices are not based on, and MainVue cannot assure, final home square footage. Photography is for illustrative purposes and should be used as a guide.*



# HAZEL

2,147 Square Feet, 3 Bedrooms, 2.5 Bathrooms, 2 Car Garage, Covered Front Porch, Home Office, Extra Storage, Covered Deck, Enclosed Pantry, Walk-in Closet in Primary Suite

On Display at Tolt River Terrace

## Edging Up

Watch closely. The sophisticated Hazel plan plays the perfect amount of space, light and lifestyle into an innovative arrangement that will leave its savvy homebuyers wondering how MainVue Homes pulled it off.

It's an edge no other three-level townhome offerings can match. Large-as-life design is both hiding – and revealed – in The Hazel's plain view. Only other plans in The Townhome Collection share its finest qualities.

Arriving home? Select your dual entry: the fashionable Lower-Level Foyer or through the personal portal connected to the Two-Car Garage (a rare feature for townhomes elsewhere).

Focused? Before hustling up the

stairs, check out the spacious, dedicated Home Office. The Hazel respects that work-from-home priorities count – but sometimes they need to separate from entertainment zones for healthy work/life balance. (MainVue also understands that some buyers will want to flip this into a private ensuite bedroom with walk-in closet.)

Up this stylish staircase, the Main-Level's Gourmet Kitchen is equally appealing for Door Dash, Uber Eats or whatever you've stocked in The Hazel's KitchenAid refrigerator/freezer. It's part of the multi-piece stunning Stainless-Steel appliance package here.

Relaxed by now? Step out on the urbane Covered Deck for a night-time cup of tea, or calm time by yourself or with your favorite people before ascending the nearby stairs to the Upper Level.

Beyond that, shift relaxation to the Upper-Level. It's where the Primary Suite's Bathroom's enclosed 6-foot-tall walk-in shower's powerful hand-held showerhead sprays jets over welcoming muscles. Nearby, a pair of rectangular vessel sinks sit atop a vanity crowned by 3cm Quartz countertop. Designer lighting bounces off Grohe faucets and European-style frameless.

Sequestered down the hallway: The Hazel's Secondary Bedroom pair. Gently push all the laundry and bed sheets into the nearby Utility Room. It's kitty-corner from the shared bathroom.

With The Hazel, edging up to the ideal zone you were meant for is about you. Now, with this intentionally designed plan, it's what The Townhome Collection has waiting for discerning homebuyers.



Hazel Unit



Hazel Unit



Home Details:

SIGNATURE SPACES:

- Covered Front Porch
- Home Office
- Extra Storage
- Covered Deck
- Enclosed Pantry
- Walk-in Closet in Primary Suite

AVAILABLE OPTIONS:

Bedroom 4 with Walk-in Closet and Bath in lieu of Home Office

Designer Features

Lower-Floor with a spacious Foyer featuring 9’ ceilings, a Home Office, and ample storage space

Unique corner-situated Gourmet Kitchen design with a strategically placed window and an open flow to the Dining Area, featuring a dazzling chandelier

Extended counter space in the Gourmet Kitchen for extra storage behind European-style, soft-close cabinets and drawers

Wide-plank, timber-look flooring seamlessly connecting the Kitchen to the living areas

Covered Deck with composite flooring and modern horizontal railing, accessible via a sliding glass door from the Dining Area

Luxury Primary Bathroom includes a 72” high semi-frameless walk-in glass shower and dual vanities topped with 3cm Quartz, all beautifully illuminated by natural light through a window

Two Secondary Bedrooms, Hall Bath, and Laundry Room set away from Primary Suite on Upper-Floor

Energy efficient lighting, appliances and building materials used to help lower the cost of utilities and improve air quality

Kitchen



Primary Bath



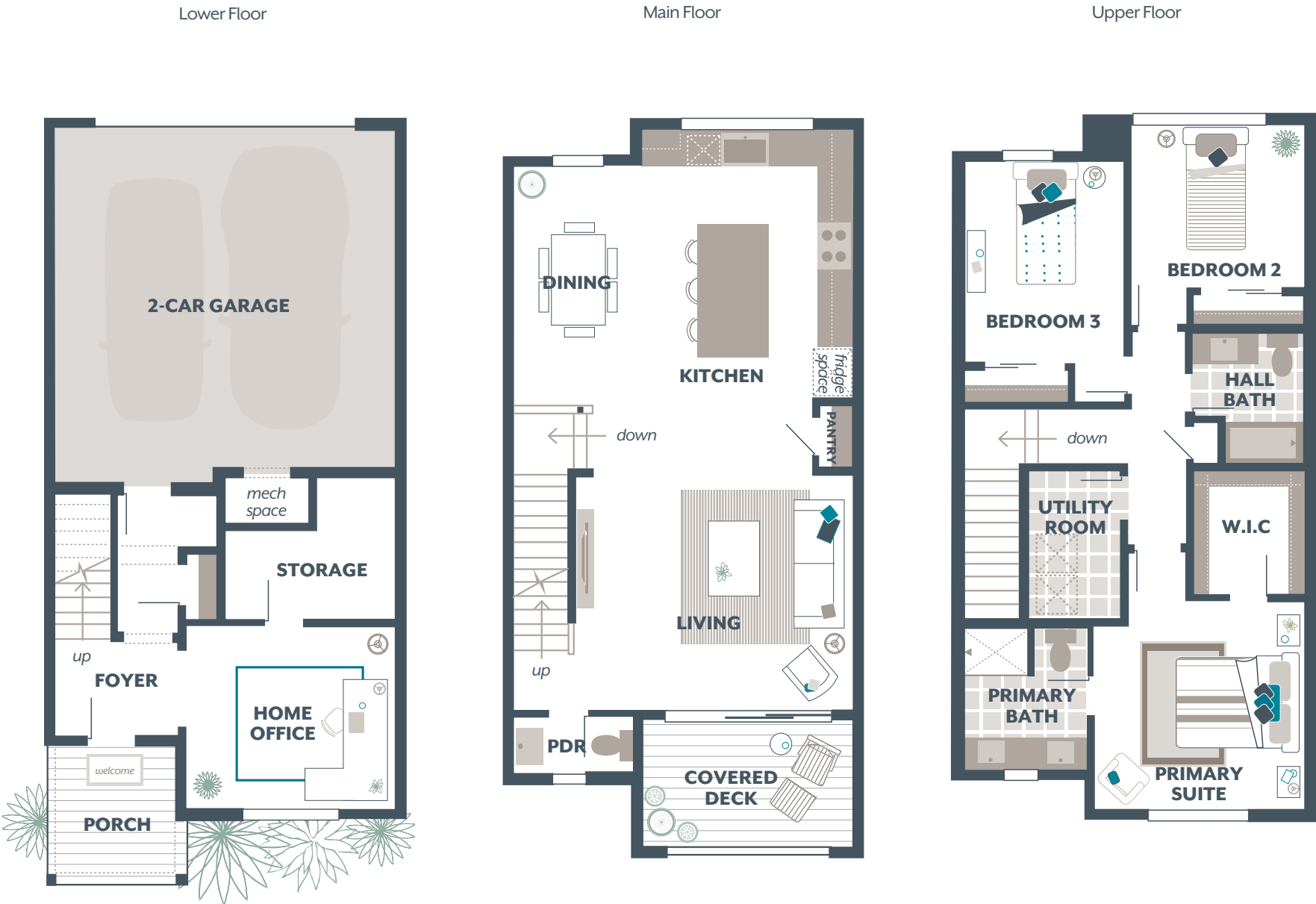
Living Room



Primary Bedroom



Dining



*\* The finished square footage areas provided are calculated based on ANSI Z765-2013 standards as commissioned by the National Association of Home Builders (NAHB). Finished square footage calculations are typically made based on plan dimensions only. Finished square footages vary based on elevation styles, plan options, final home design, variances that arise during construction and other factors. Plans, square footage and house availability may vary by community and are subject to change. Buyers are responsible for verifying the area of their homes. Home prices are not based on, and MainVue cannot assure, final home square footage. Photography is for illustrative purposes and should be used as a guide.*





# SPRUCE

2,284 Square Feet, 3 Bedrooms, 2.5 Bathrooms, 2 Car Garage, Extended Covered Front Porch, Home Office, Extra Storage, Study Nook, Covered Deck, Enclosed Pantry, Walk-in Closet in Primary Suite

On Display at Tolt River Terrace and Elmbrook

## Redefining Your World

Unleash your imagination. And let The Spruce become the key to making that happen. It's here – at the intersection of edgy and sophisticated – that elevating your lifestyle becomes a real destination for modern homebuyers.

How? As the (slightly) largest selection in the Townhome Collection, The Spruce is set on outside corners of townhome arrangements. That means extra shafts of light pour in via innovative windows found on all three levels.

On the Lower-Level, natural light from the extended Covered Porch splays into the Home Office. A clear front door leads to a spacious Foyer and modern office entry. Breathe a sigh of storage relief when you stash

your extra stuff in a room connected to the office – and still have hand space for other things in the closet at the vestibule connected to the Two-Car Garage.

One level up, dream of all the hours you'll spend in the luxurious, open flow Living Room, Gourmet Kitchen and Dining areas. Two added windows splash light into the kitchen. It also boasts a smart Study Nook in the corner and a well-sized enclosed walk-in Pantry, with ingredients to craft a charcuterie board for serving on your pop-out Deck.

In the center of this Main-Level, a chic chandelier-style Dining light bathes the area in luxurious after-hours warmth.

After work, jet set to the Primary Suite by following plush carpeting

to the Upper-Level. The Primary Bathroom's dual, rectangular vessel sink vanity is crowned by 3cm Quartz countertop. Soft designer lighting dances off the Chrome Grohe faucets and European-style frameless cabinets. It also illuminates the 6-foot-high glass enclosing the walk-in shower where the hand-held shower head may steal the show.

Down the hallway, two Secondary Bedrooms share their own bathroom near the Utility Room's laundry-cleaning convenience. With clever originality designed to spark your imagination on all three levels, The Spruce is ready to redefine your world by elevating your lifestyle.



Spruce Unit



Spruce Unit



Spruce Unit



Spruce Unit



Home Details:

- SIGNATURE SPACES:**
- Extended Covered Front Porch
  - Home Office
  - Extra Storage
  - Study Nook
  - Covered Deck
  - Walk-in Pantry
  - Walk-in Closet with additional Enclosed Closet Space in Primary Suite

- AVAILABLE OPTIONS:**
- Bedroom 4 with Bath in lieu of Home Office and Storage

Designer Features

End unit design allowing for expanded spaces and added windows throughout the home

Extra wide Covered Porch accented by a clear glass Front Entry door, leading to the open Foyer with spacious 9’ ceilings

Lower-Floor flush with timber-look flooring and a private Home Office with Storage closet

Corner-situated Gourmet Kitchen design with a strategically placed window at counter and unique Study Nook that provides additional work or study space

Spacious Walk-In and Enclosed Pantry space for added storage in Kitchen

Expansive Main-Floor living area with 9’ ceilings, anchored with wide-plank timber-look flooring, leading to a Covered Deck lined with modern horizontal black railing

Luxurious Primary Bath with 72” high semi-frame-less glass walk-in shower with Chrome hardware, dual vanities with 3cm Quartz countertops and soft designer lighting

Energy efficient lighting, appliances and building materials used to help lower the cost of utilities and improve air quality

Kitchen



Primary Bath



Foyer



Primary Bedroom



Home Office



*\* The finished square footage areas provided are calculated based on ANSI Z765-2013 standards as commissioned by the National Association of Home Builders (NAHB). Finished square footage calculations are typically made based on plan dimensions only. Finished square footages vary based on elevation styles, plan options, final home design, variances that arise during construction and other factors. Plans, square footage and house availability may vary by community and are subject to change. Buyers are responsible for verifying the area of their homes. Home prices are not based on, and MainVue cannot assure, final home square footage. Photography is for illustrative purposes and should be used as a guide.*



THE TOWNHOME COLLECTION

# Your New Style, Your New Home







## The Townhome Collection

# LUXURY INCLUSIONS

*With MainVue Homes, the difference is everywhere. It often begins with a breath-taking sense of satisfaction in buying a new home that is already flush with a litany of Luxury Inclusions – at no extra cost.*

Much of the credit goes to our team of professional designers, who have selected dazzling hand-selected finishes, fixtures and features that complement the nuances of each space in every home. These Luxury Inclusions are intrinsic to MainVue Homes, and almost impossible to find elsewhere.

With MainVue Homes, there's always something more, including more value in having countless luxury amenities included as standard.

When it comes to the MainVue Townhome Collection, it's more than innovative home plans and artfully crafted facades. It's about finishing touches that give you a simple thrill...over and over again.

It's the form and function of KitchenAid appliance package. It's the sleek hardware and soft-close concealed door hinges on stunning European style frameless cabinets. It's the oh-so-heavenly spray of an adaptable hand-held showerhead in your 72" tall enclosed shower in the Primary Bath after a rough day. And, it's the masterful menu created with energy efficient Stainless Steel appliances then served atop a 3cm Quartz capped Kitchen island.

Why wait? From Kitchens to Baths, intimate indoor spaces, explore the possibilities of what your future can be - or what it will be - with MainVue Homes.

Come discover for yourself how the difference is truly everywhere.

For a complete list of Luxury Inclusions visit:  
**[MAINVUEHOMES.COM/TOWNHOME-INCLUSIONS](https://mainvuehomes.com/townhome-inclusions)**





# GOURMET KITCHENS



### Gourmet Kitchen Island

- Trust in extra-thick 3cm Quartz countertop, finished by flat polished edges
- Adore company from this centered hub, ideal for host-friendly conversation and counter-top convenience
- Revel in balanced arrangement with deep countertop overhang for roomy barstool seating
- Bank on copious under-counter storage

### 3cm Quartz Countertops

- Showcase attractive, low-maintenance and incredibly durable stone surface
- Have faith in inherent anti-microbial, germ-impenetrable qualities
- Prepare meals atop a reliable heat-and-scratch-resistant surface
- Start and complete projects on stain-resistant, non-porous surface

### Designer Tile Backsplash

- Show off your artistic flair with full-height stylish tile backsplash
- Selected to complement each designer-palette color scheme
- Barely lift a finger to maintain this durable and elegant easy-to-clean surface

### European Frameless Cabinetry

- Select from textured laminate, gloss laminate, or matte laminate finishes
- Discover reliable soft-close function with concealed full-extension drawer glides and discreet door hinges
- Showcase sleek, stylish satin nickel handles and pulls
- Rely on durable fade, and scratch-resistant surface

- Expanded storage space with extended 40-inch-tall upper cabinets
- Depend on adjustable, solid, white and easy-to-clean interiors

### 30” KitchenAid Gas Range

- Ensure consistent heating and even cooking with lower oven’s Even-Heat™ True Convection technology
- Enhance your cooking results with the Steam Rack offering the option to add moisture inside the oven
- Benefit from the lower oven’s interior light in beautiful cobalt blue enamel finish for added delight and easy-to-clean surface
- Cook to perfection on the top 5 sealed burners with deep well and professional style control



### 30” KitchenAid Microwave and Hood

- Increase your cooking speed with this powerful 30” 1000-watt Microwave Hood combination in flawless Stainless Steel
- Take the guess work out of reheating and defrosting by utilizing feature sensors built into the Microwave to automatically adjust the time needed
- Keep the air free of smoke, grease and odors with the powerful 400 CFM Motor Class ventilation fan
- Cleaning up after use is easier than ever with the interior smooth CookShield Finish

### Sleek, Chrome Kitchen Sink Faucet

- Glide ultra-smooth handle motion with Silk-Move’s™ features, ensuring precise water flow and temperature control
- Clean effortlessly with dual spray function

- enabling easy switching from regular stream to spray rinsing
- Admire the dazzle of Chrome finish, also promising longer-lasting shine with built-in resistance to scratches, tarnish and buildup



### Single Bowl Kitchen Sink

- Manage simple, scour and tidy-up hand washing in this sleek Stainless Steel sink. Its single oversized bowl makes cleaning large items so much easier
- Admire square-edge detailing that aligns with contemporary and streamlined details throughout the space
- Enjoy extra sink protection with sink’s polished Chrome bottom grid
- Assure cleanliness and hygienics with Stainless Steel finish that doesn’t harbor bacteria

### KitchenAid Dishwasher

- Wash smaller items on third-level, easy-glide rack
- Fill large-capacity loads thanks to tall design
- Select your favorite cycles using the concealed easy-access control panel

### Energy Efficient LED Lighting

- Illuminate your MainVue Kitchen with plenty of carefully placed LED lights with flush-rim fixtures throughout

### Pantry\* (per plan)

- Organize everything from dry goods to pet foods and more on white mesh wire shelving
- Light up your walk-in pantry with flush-mount LED fixtures, in brushed nickel
- Move conveniently between Pantry supplies and nearby Kitchen work areas

# INCLUSIONS THROUGHOUT

### Clear Glass Entry Door

- Safeguard entry with keyed-entry handle set and secured deadbolt in designer Chrome finish



### Wide-Plank Timber-Look Flooring

- Bank on its easy-to-clean real-wood look for an authentic beauty and feel
- Depend on the resistance to stains, dents, scratches and fading

### Stylish, Low Maintenance Decks

- Trust in low-maintenance flooring finish that’s resistant to fading, scratching, stains, mold and mildew
- Step comfortably across flooring that’s splinter-free with a protective coating that never needs refinishing
- Adore the detail of the horizontal black iron, powder coated railing lining the outer edge

### Elegant and Practical Interior Lighting

- Up your Dining Room style when nine cylindrical bulbs in the chandelier come to light in Chrome or Black Matte finish
- Find anything you ever tucked away in Closets, Pantries and under stair Storage with flush-mount LED lighting fixtures in brushed Nickel finish



### Expansive Oversized Windows

- Lounge in the comfort of MainVue windows, wrapped with 6-inch moisture barriers
- Welcome fresh air in through screens at all operable windows and sliding glass doors

### Plush Carpet and Padding

- Admire the carefully selected shade, coordinating perfectly with the home’s color scheme
- Listen to improved acoustics - courtesy of a high-density cushioned pad, which extends carpet life and enhances comfort

### Stylish Interior Doors

- Feel secure in the highly rated solid-core, single panel door with self-closing hinges and deadbolt connecting the Garage to the home’s interior
- Access your Deck via an oversized sliding glass door with dual-glazed low E-Glass

### Convenient Utility Rooms

- Wall-to-wall luxury vinyl tile flooring resists scratches, stains and typical wear and tear for long-lasting performance
- Avoid lint and humidity with the recessed dryer vent box
- Access convenient hook-up and safety shut-off valve with recessed washer box

### Innovative Storage Spaces

- Stack-and-store with all the space you ever dreamed of in your walk-in Linen Closets with white ventilated shelving\*
- Spin your spacious Primary Suite Dressing Room into a shoes and clothing gallery with all the white wire shelving needed for multi-season wardrobes

### Modern Placement and Finishes

- Achieve even, clean finishes on walls and ceilings with a light fog and dash texture (excluding garage)
- Move freely, and admire the straight line-of-sight views, throughout the expansive open concept spaces found in main living areas

### Spacious 9’ Ceilings

- Lower and Main floors boasts striking 9’ ceilings

# EXTERIORS

### Modern Entry Elements

- Greet your guests out of the environmental elements under the stylish Covered Porch

### Designer Color Schemes

- Create unforgettable curb appeal with exterior color schemes selected by MainVue Homes’ professional designers

### Versatile Siding Styles and Features

- Gaze at it for its beauty – but respect it for the protection of this long-lasting, industry-leading siding
- Pour over the versatile styles and installations to create durable style and texture variety
- Marvel at woodgrain-stained siding, with a flawless finish providing warmth\*

### Protective Roofing Materials and Features

- Trust in resilient fiberglass mat for inner-core strength and long-lasting protection
- Built-in algae resistance and exceptional bonding stand up to extreme weather conditions

### Durable Driveways and Lead Walks

- Emphasize your home’s safety and sophistication with the exposed aggregate designed into drives, walkways and Front Porch
- Appreciate the durable, non-skid surface, ideal for Northwest seasonal weather

### Contemporary Style Garage Doors

- Kick up your street appeal with a sleek, enamel-finish Garage door powered by 1/3 horsepower chain-drive
- Prevent security code theft with infrared sensing beam technology
- Seamlessly open and close your MainVue Garage door with two remote transmitters featuring extra safety and security features
- Allow a flood of natural light through added accent windows spanning the width of the Garage door

### Black Iron Deck Railings

- Designed with safety and style in mind, horizontal black iron railings line each Covered Deck adding accent and modern sophistication to each facade

\*Inclusions subject to change per community and per home design. Refrigerator not included. Ask a sales consultant for detailed information on home specific Inclusions.



# LUXURY BATHROOMS



## PRIMARY BATHROOM

### Dual Vanities

- Double-down on space for two sets of tooth-brushes and hair styling products with an extra-large dual vanity oozing with counter-top space
- Maximize reflection with a large frameless 42” tall mirror reaching from the countertop all the way to vanity lights

### 3cm Quartz Vanity Countertops

- Showcase attractive, low-maintenance and incredibly durable stone surface
- Have faith in inherent anti-microbial, germ-im-penetrable qualities
- Place items with ease atop a reliable heat, and scratch, resistant surface
- Assemble your personal items on a stain-re-sistant, non-porous surface

### Oversized Vessel Style Sinks

- Sense the luxury of rectangular vitreous China vessels with rounded edges and clean lines
- Simplify your life with low-maintenance, easy-to-clean surfaces
- Enjoy the exquisite high-gloss white finish, complementing the 3cm Quartz countertop

### Chrome Finish Grohe Faucets

- Glide the single handle for easy on/off and temperature control
- Rely on non-porous finish for stain-fighting surface

### European Style Frameless Cabinetry

- Select from textured laminate, gloss laminate, or matte laminate finishes

- Discover reliable soft-close function with concealed full-extension drawer glides and discreet door hinges
- Sleek and stylish satin nickel handles and pulls
- Trust in durable fade-and scratch-resistant surface
- Depend on adjustable, solid, white and easy-to-clean interiors

### Semi-Frameless Walk-in Shower

- 72” high glass enclosure featuring thick 3/8” glass, pivoting glass door and Chrome finish hardware
- Personalize a shower experience with Grohe’s hand-held shower head with chrome finish and slide rail delivers gradual and precise control of the water flow and temperature
- Adjust between users with the sliding height bar
- Surround yourself with designer porcelain tile walls grounded with an easy-to-clean fiber-glass shower pan



### Luxury Vinyl Tile Flooring

- Carefully chosen to complement each color scheme
- Scratch, stain- wear, and water-resistant, for long-lasting performance

### Soft Designer Lighting

- Enhance all your best features with sleek van-ity lighting in Chrome finish and crystallized glass shades

## SECONDARY BATHROOMS

### Durable Vanity Countertops

- Run your palms over the smooth, easy-to-clean durable laminate surface perfectly coordinates with each designer palette color scheme

### European Style Frameless Cabinetry

- Select from textured laminate, gloss laminate, or matte laminate finishes
- Discover reliable soft-close function with concealed full-extension drawer glides and discreet door hinges
- Highlight sleek, stylish satin nickel pulls
- Trust in durable fade- and scratch-resistant surface
- Depend on adjustable, solid, white and easy-to-clean interiors

### Elegant Vanity Lighting

- Revel in the elegant simplicity of brushed Chrome finish

### High-Gloss Vanity Sinks

- Flaunt the high-gloss white finish, comple-menting the beautiful countertop
- Simplify your life with low-maintenance, easy-to-clean Porcelain

### Chrome Finish Faucets

- Control accurate temperatures and water flow with a Chrome finish Grohe single han-dle faucet

### Combination Tub and Shower

- Easy-to-clean bathtub/shower combination plays second-to-none in its form and tile-pat-tern finish surround
- Reach for hair- and body-care products on the convenient shelf
- Accurately steer water flow and temperature with the Chrome-finished Grohe shower handset

### Luxury Vinyl Tile Flooring

- Carefully chosen to complement each color scheme
- Scratch, stain- wear, and water-resistant, for long-lasting performance

## POWDER ROOMS



### Wall Mounted Vanity Sink

- Show off an upscale style statement with this easy-to-clean, white wall mounted vanity sink

### Faucet

- Glide the single handle for easy on/off and tem-perature control
- Rely on non-porous finish for stain-fighting Chrome surface

### Designer Vanity Lighting

- Capture all the most stunning angles of light with this refined singular glass pendant
- Admire the striking accent of the Chrome and crystallized glass shade

### Mirror

- Glance at the high-quality reflections assured by this rectangular sheet mirror
- Centered perfectly above the sink

### Wide-Plank, Timber-Look Flooring

- Bank on its easy-to-clean real-wood look for an authentic beauty and feel
- Depend on the resistance to stains, dents, scratches and fading

# ENERGY EFFICIENCY

## Ductless Heat Pump System with Mini Splits in Primary and Main Living Areas

- Provides efficient heating and cooling capa-bilities, allows precise temperature regulation in each room (Primary Bedroom, Main Living Areas including Kitchen, Dining, Living, and Home Office), and improves overall energy efficiency and comfort of the home

## Hybrid Electric Water Heater

- 4x as efficient as a standard electric tank—pro-duces fewer greenhouse gases, meets Energy Star requirements, with integrated WiFi and energy usage reporting

## High Performance House Wrap

- Intelligently engineered house wrap designed to block moisture from the outside but allows it to escape safely from the inside. Superior air and water holdout reduces energy costs

## Insulation

- Stabilize and maintain a comfortable whole-home temperature with R49 blown fiberglass attic insulation, and R21 fiberglass batt insula-tion in exterior walls

## AERO Barrier House Seal

- An advanced sealing method that fills micro-scopic gaps, reducing air flow between the indoors and outdoors, significantly improving the efficiency of heating, ventilation, and air conditioning. Enjoy improved energy efficiency, indoor comfort, and air quality in your home

## Energy Recovery Ventilator

- This system moves air continuously through the home, bringing conditioned air in and moving stale air out, maintaining a comfort-able temperature and reducing heating/cool-ing costs

## Energy Saving Appliances

- Enhance your good taste in Kitchen with an array of energy-efficient appliances – from the dishwasher, microwave, and oven

## LED Lighting

- Maximize broad and precise lighting while decreasing energy usage with LED bulbs and fixtures arranged through your MainVue home

## Dimmer Switches

- Dimmer switches at most overhead lighting fixtures in main living areas, allowing you to adjust light output, which helps the bulbs last longer

## Motion Sensor Switches

- Added motion sensors to closets, utility room and garage

## Exterior Light Timers

- Dawn till dusk light timers at Front Porch and Decks

## Strategic Windows

- Earn an entirely new point of view when strategically placed windows – engineered for maximum efficiency – bring on artistry and natural light. Their dual-glazed, low E-glass makeup drastically improves lighting while reducing heating and cooling costs



\*Inclusions subject to change per community and per home design. Ask a sales consultant for detailed information on home specific Inclusions.





MAINVUE HOMES

The Difference  
is Everywhere





1.800.764.8171

MAINVUEHOMES.COM/**TOWNHOMES**

