

LIMITED
TIME

Huge Holiday Savings Event!

MAINVUE[®]
HOMES

Save **\$52,000*** on this luxury home! *Act now. Offer ends 12.24.2025*

QUICK
MOVE-IN

MOVE-IN READY

**SIGNATURE OUTDOOR ROOM FIREPLACE, 3-CAR GARAGE WITH DIRECT
ACCESS TO BUTLER'S PANTRY, GREENBELT HOMESITE, AND LUXURY
INCLUSIONS THROUGHOUT!**

Now Only \$876,995

MainVue at McCormick / **Lot 5-67** / 4140 Reef Rd SW, Port Orchard

Cypress Home Design / 3295 Square Feet / 4 Beds / 2.5 Baths / 3 Cars



* Image shows the Cypress H in Opal Twilight color scheme and should be used as a guide only.

* This home is built in the H Facade Jade Daybreak Color Scheme

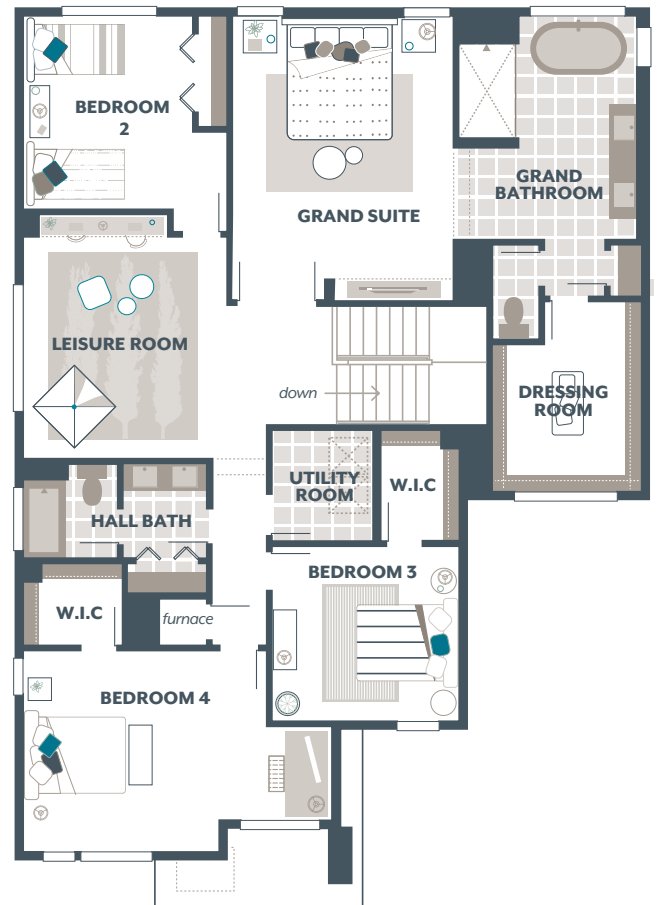
MAINVUEHOMES.COM 1.800.764.8171

MLS# 2381039. Represented by TeamBuilder KW. *Huge Holiday Savings Event is only available on select Move-In Ready MainVue homes and cannot be combined with any other offers. To qualify, purchase contracts must be written between November 7th, 2025 and December 24th, 2025. Seller credit applied at closing for allowable closing costs, rate buydown, pre-pays, and more. Custom blinds to be installed after closing. Pricing, availability, and specification are subject to change without notice. Photography is for illustrative purposes and should not be used as a guide. Effective 12.4.2025

Cypress Home Design

Included Selections:

Exterior Color Scheme: Jade Daybreak, Interior Color Scheme Shale, Facade: H, Signature Outdoor Room Fireplace, Quartz Countertop in Hall Bath, Third Car Garage Bay



The finished square footage areas provided are calculated based on ANSI Z765-2013 standards as commissioned by the National Association of Home Builders (NAHB). Total square footage used in marketing includes the outdoor room. Finished square footage calculations are typically made based on plan dimensions only. Finished square footages vary based on elevation styles, plan options, final home design, variances that arise during construction and other factors. Plans, square footage and house availability may vary by community and are subject to change.

Buyers are responsible for verifying the area of their homes. Home prices are not based on, and MainVue cannot assure, final home square footage. Photography is for illustrative purposes and should be used as a guide.

