

early SPRING SAVINGS!

Save **\$90,000*** on this new luxury home

Choose How You Save: Use your savings towards interest rate buydowns, closing costs, refrigerator, washer, dryer, custom blinds, closet system, price reduction and more! *Restrictions Apply. **Limited-Time Offer!**

MOVE-IN READY

LUXURY INCLUSIONS ARE OUR STANDARD

Now Only \$1,808,995

Elmbrook / **Lot 13** / 3912 199th Pl SE, Bothell

Abelia Home Design / 2727 Square Feet / 4 Beds / 2.75 Baths / 2 Cars



** Image shows the Abelia T Facade in Jade Daybreak color scheme and should be used as a guide only.*

** This home is built in the T Facade Ginger Daybreak Color Scheme*

MAINVUEHOMES.COM 1.800.764.8171

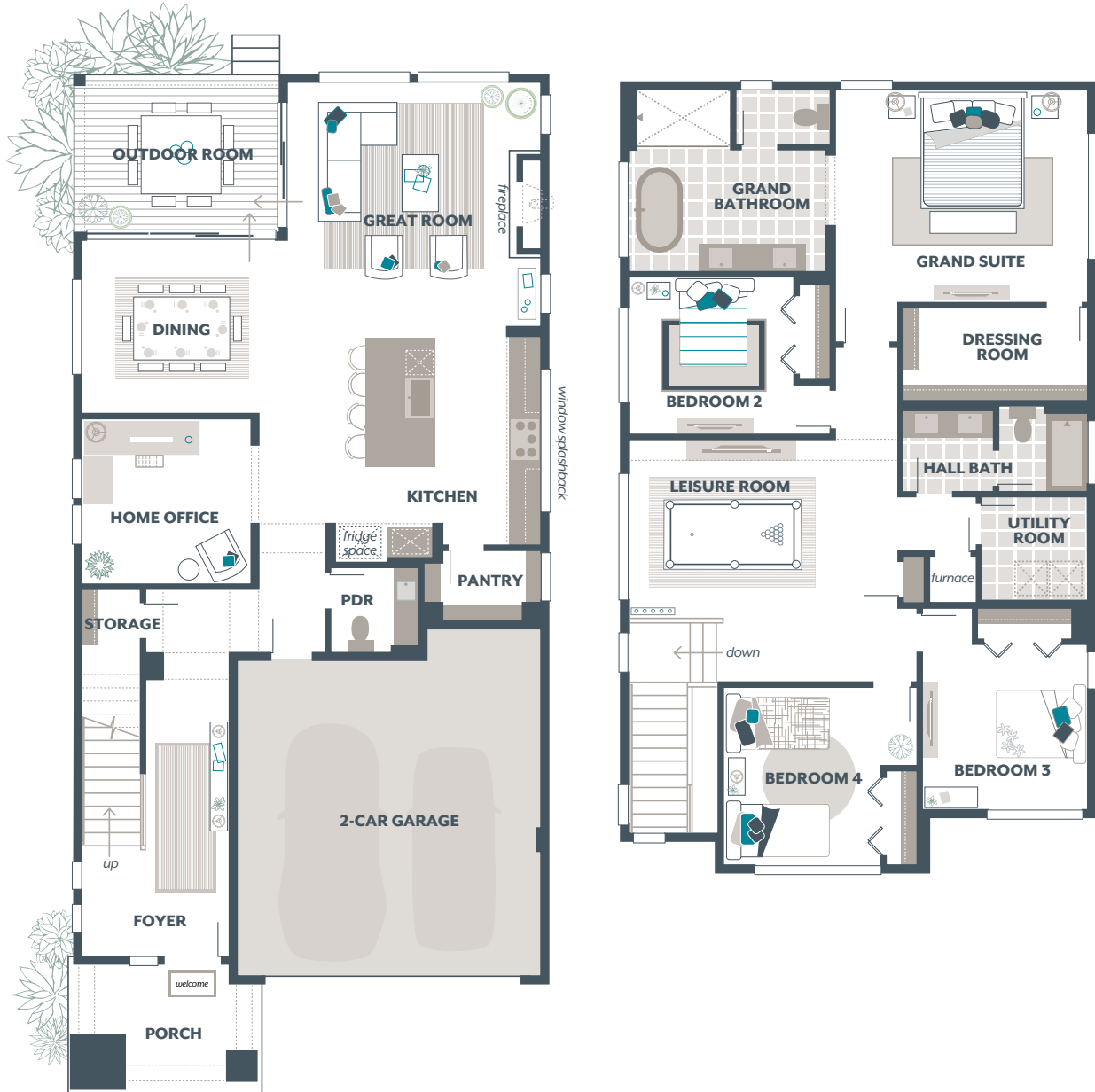
Pricing and availability are subject to change. Photos are for illustrative purposes and should be used as a guide only. Total square footage includes Signature Outdoor Room. Please speak to a MainVue Sales Consultant for more details on this home.

*Represented by TeamBuilder KW. Early Spring Savings is only available on select Move-In Ready MainVue homes and cannot be combined with any other offers. To qualify, purchase contracts must be written between January 16, 2026 and March 20, 2026. Seller credit applied at closing for allowable closing costs, rate buydown, pre-pays, and more. Custom blinds or closet system to be installed after closing. Pricing, availability, and specifications are subject to change without notice. Photography is for illustrative purposes only and should not be used as a guide. Effective 1.9.2026

Abelia Home Design

Included Selections:

Exterior Color Scheme: Ginger Daybreak, Interior Color Scheme Shale, Facade: T



The finished square footage areas provided are calculated based on ANSI Z765-2013 standards as commissioned by the National Association of Home Builders (NAHB). Total square footage used in marketing includes the outdoor room. Finished square footage calculations are typically made based on plan dimensions only. Finished square footages vary based on elevation styles, plan options, final home design, variances that arise during construction and other factors. Plans, square footage and house availability may vary by community and are subject to change. Buyers are responsible for verifying the area of their homes. Home prices are not based on, and MainVue cannot assure, final home square footage. Photography is for illustrative purposes and should be used as a guide.

