



early

SPRING SAVINGS!

MAINVUE
HOMES

Save **\$53,000*** on this new luxury home

Choose How You Save: Use your savings towards interest rate buydowns, closing costs, refrigerator, washer, dryer, custom blinds, closet system, price reduction and more! *Restrictions Apply. **Limited-Time Offer!**



MOVE-IN READY

LUXURY INCLUSIONS ARE OUR STANDARD

Now Only \$883,995

MainVue at McCormick / **Lot 5-86** / 4131 Wandering Wy, Port Orchard

Cypress Home Design / 3295 Square Feet / 4 Beds / 2.75 Baths / 3 Cars



* Image shows the Cypress H in Opal Twilight color scheme and should be used as a guide only.

* This home is built in the GF Facade Opal Twilight Color Scheme

MAINVUEHOMES.COM 1.800.764.8171

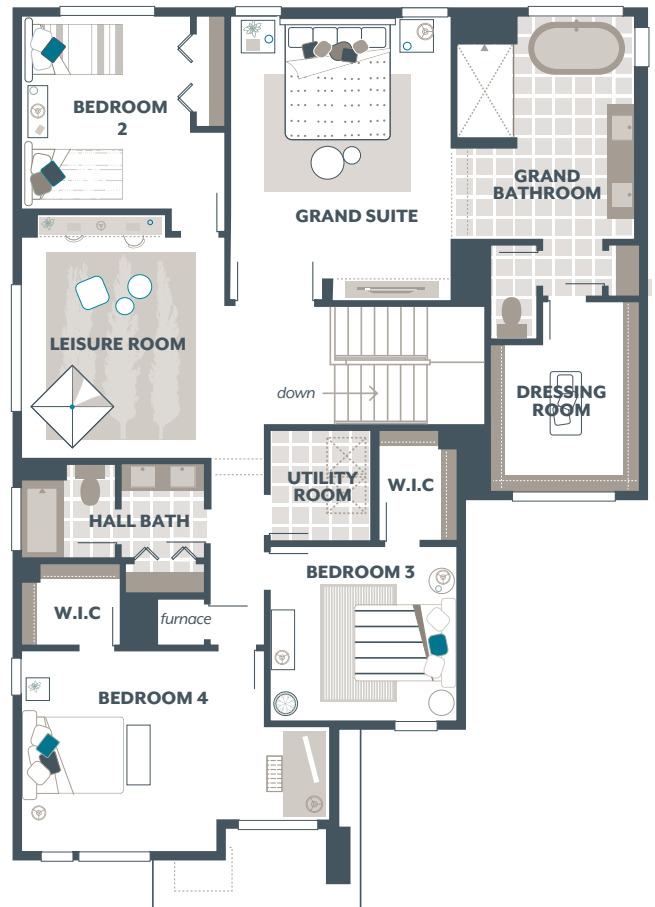
MLS# 2324357. Pricing and availability are subject to change. Photos are for illustrative purposes and should be used as a guide only. Total square footage includes Signature Outdoor Room. Please speak to a MainVue Sales Consultant for more details on this home.

*Represented by TeamBuilder KW. Early Spring Savings is only available on select Move-In Ready MainVue homes and cannot be combined with any other offers. To qualify, purchase contracts must be written between January 16, 2026 and March 20, 2026. Seller credit applied at closing for allowable closing costs, rate buydown, pre-pays, and more. Custom blinds or closet system to be installed after closing. Pricing, availability, and specifications are subject to change without notice. Photography is for illustrative purposes only and should not be used as a guide. Effective 1.9.2026

Cypress Home Design

Included Selections:

Exterior Color Scheme: Opal Twilight, Interior Color Scheme Opal, Facade: GF, Quartz Countertop in Hall Bath, Signature Outdoor Room Fireplace, Third Car Garage Bay, 3/4 Bath ILO Powder Room



The finished square footage areas provided are calculated based on ANSI Z765-2013 standards as commissioned by the National Association of Home Builders (NAHB). Total square footage used in marketing includes the outdoor room. Finished square footage calculations are typically made based on plan dimensions only. Finished square footages vary based on elevation styles, plan options, final home design, variances that arise during construction and other factors. Plans, square footage and house availability may vary by community and are subject to change.

Buyers are responsible for verifying the area of their homes. Home prices are not based on, and MainVue cannot assure, final home square footage. Photography is for illustrative purposes and should be used as a guide.

