

**MORE** WITH  
**MAINVUE**  
**SALES EVENT!**

✔ **MORE** Luxury. ✔ **MORE** Value. ✔ **MORE** Style.

Now Save **MORE** with our Limited-Time Sales Event!

**ACT NOW!** Sale Ends May 15th.

**MOVE-IN READY!**

**BUILT WITH GUEST SUITE AND 3/4 BATH ON MAIN AND 3 CAR GARAGE**

**WAS:**  
~~-\$1,233,995~~

**NOW:**  
\$1,159,995

**SAVE:**  
**\$74,000**

Eaglemont / **Lot 9-2** / 13665 197th Ave SE, Monroe

**Cypress V5 Home Design** / 3258 Square Feet / 5 Beds / 2.75 Baths / 3 Cars



*\* Image shows the Cypress XC Facade in Copper Daybreak color scheme and should be used as a guide only.*

*\* This home is built in the GF Facade Slate Twilight Color Scheme*

**1.800.764.8171 MAINVUEHOMES.COM**

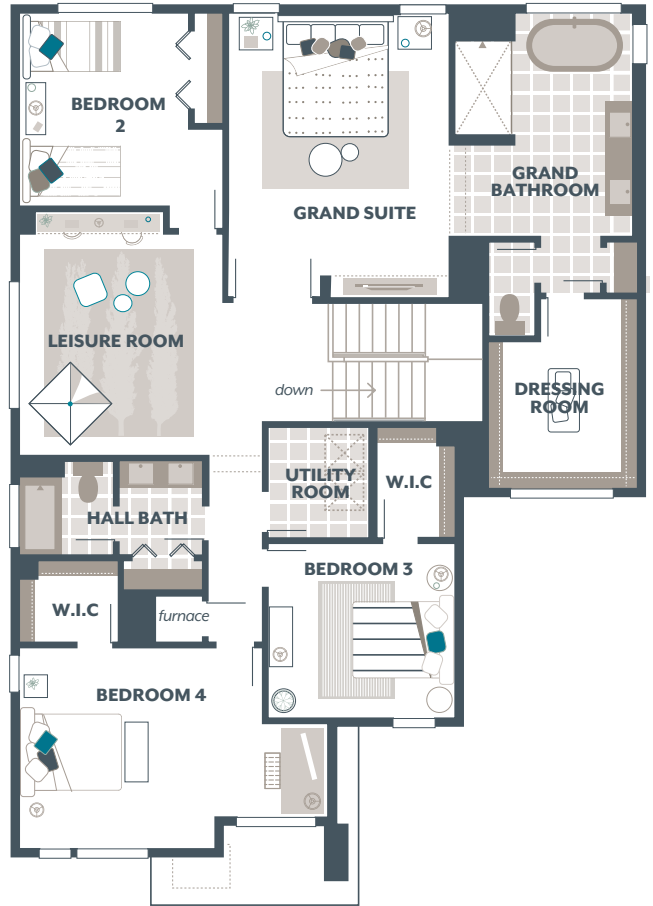
More with MainVue Sales Event pricing is only available on select homes and cannot be combined with any other offers. Purchase Contracts must be written between April 10th, 2026 and May 15th, 2026. Pricing, availability, and specifications are subject to change without notice. Photography is for illustrative purposes only and should not be used as a guide. Represented by TeamBuilder KW. Effective 3.31.2026

**MAINVUE**  
HOMES

# Cypress Home Design

## Included Selections:

Exterior Color Scheme: Slate Twilight, Interior Color Scheme Slate, Facade: GF, Third Car Garage Bay, Guest Suite including 3/4 Bath



The finished square footage areas provided are calculated based on ANSI Z765-2013 standards as commissioned by the National Association of Home Builders (NAHB). Total square footage used in marketing includes the outdoor room. Finished square footage calculations are typically made based on plan dimensions only. Finished square footages vary based on elevation styles, plan options, final home design, variances that arise during construction and other factors. Plans, square footage and house availability may vary by community and are subject to change.

Buyers are responsible for verifying the area of their homes. Home prices are not based on, and MainVue cannot assure, final home square footage. Photography is for illustrative purposes and should be used as a guide.

