

MORE WITH MAINVUE

SALES EVENT!

✔ MORE Luxury. ✔ MORE Value. ✔ MORE Style.

Now Save **MORE** with our Limited-Time Sales Event!

ACT NOW! Sale Ends May 15th.

MOVE-IN READY!

BEDROOM AND BATH ON LOWER LEVEL, COVERED DECK, PANTRY SPACE, PRIMARY SUITE WALK-IN CLOSET, AND LUXURY INCLUSIONS THROUGHOUT

WAS:
~~-\$1,019,995~~

NOW:
\$958,995

SAVE:
\$61,000

Elmbrook / **Lot 97** / 3915 198th St SE, Unit G2, Bothell

Lilac Home Design / 1880 Square Feet / 4 Beds / 3.5 Baths / 2 Cars



** Image shows the Lilac Facade in Slate Twilight color scheme and should be used as a guide only.*

* This home is built in the MFC Facade Slate Twilight Color Scheme

1.800.764.8171 MAINVUEHOMES.COM

More with MainVue Sales Event pricing is only available on select homes and cannot be combined with any other offers. Purchase Contracts must be written between April 10th, 2026 and May 15th, 2026. Pricing, availability, and specifications are subject to change without notice. Photography is for illustrative purposes only and should not be used as a guide. Represented by TeamBuilder KW. Effective 3.31.2026

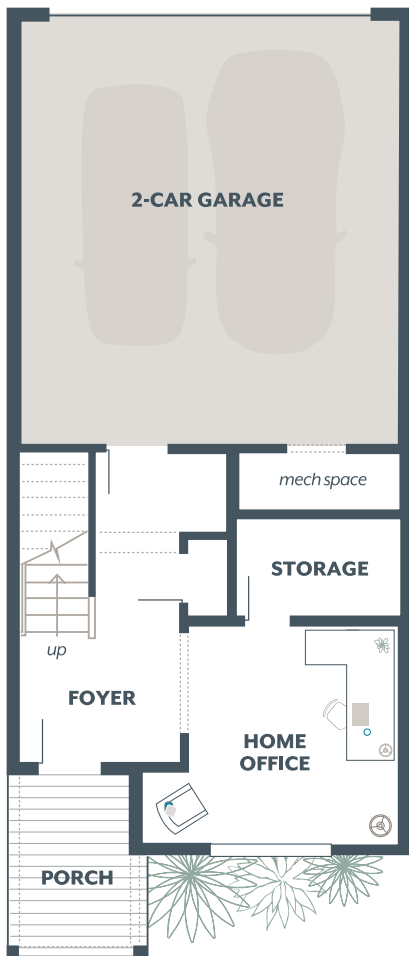
MAINVUE
HOMES

Lilac Townhome Design

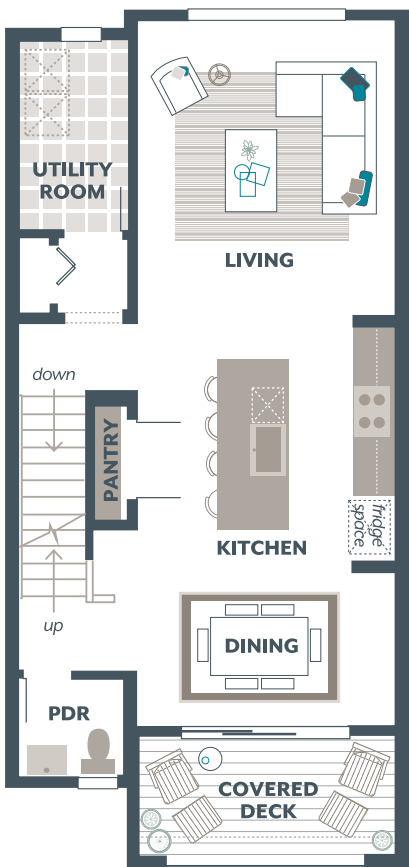
Included Selections:

Exterior Color Scheme: Slate Twilight, Interior Color Scheme Pearl, Facade: MFC, Bedroom 4 with Bath

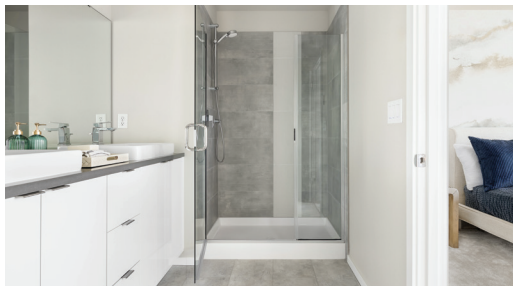
Lower Floor



Main Floor



Upper Floor



The finished square footage areas provided are calculated based on ANSI Z765-2013 standards as commissioned by the National Association of Home Builders (NAHB). Finished square footage calculations are typically made based on plan dimensions only. Finished square footages vary based on elevation styles, plan options, final home design, variances that arise during construction and other factors. Plans, square footage and house availability may vary by community and are subject to change. Buyers are responsible for verifying the area of their homes. Home prices are not based on, and MainVue cannot assure, final home square footage. Photography is for illustrative purposes and should be used as a guide.

