

MORE WITH MAINVUE SALES EVENT!

✔ MORE Luxury. ✔ MORE Value. ✔ MORE Style.

Now Save **MORE** with our Limited-Time Sales Event!

ACT NOW! Sale Ends May 15th.

MOVE-IN READY!

SIGNATURE OUTDOOR ROOM, HOME OFFICE, TWO-STORY DINING ROOM, MULTI-PURPOSE ROOM, GRAND BUTLER'S PANTRY, AND SO MUCH MORE!

WAS:
~~-\$1,179,995~~

NOW:
\$1,108,995

SAVE:
\$71,000

Kentwood Heights / **Lot 3** / 25614 169th Pl SE, Covington

Sage Home Design / 3948 Square Feet / 4 Beds / 3.5 Baths / 2 Cars



** Image shows the Sage Facade in Slate Twilight color scheme and should be used as a guide only.*

** This home is built in the D Facade Pewter Daybreak Color Scheme*

1.800.764.8171 MAINVUEHOMES.COM

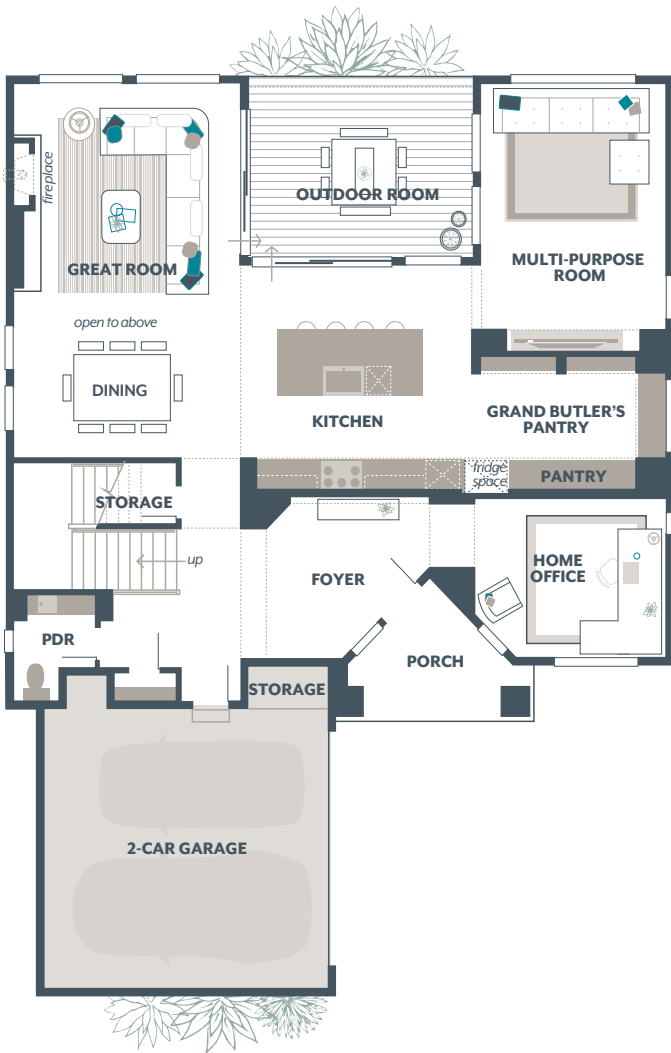
More with MainVue Sales Event pricing is only available on select homes and cannot be combined with any other offers. Purchase Contracts must be written between April 10th, 2026 and May 15th, 2026. Pricing, availability, and specifications are subject to change without notice. Photography is for illustrative purposes only and should not be used as a guide. Represented by TeamBuilder KW. Effective 4.9.2026

MAINVUE
HOMES

Sage Home Design

Included Selections:

Exterior Color Scheme: Pewter Daybreak, Interior Color Scheme Slate, Facade: D



The finished square footage areas provided are calculated based on ANSI Z765-2013 standards as commissioned by the National Association of Home Builders (NAHB). Total square footage used in marketing includes the outdoor room. Finished square footage calculations are typically made based on plan dimensions only. Finished square footages vary based on elevation styles, plan options, final home design, variances that arise during construction and other factors. Plans, square footage and house availability may vary by community and are subject to change. Buyers are responsible for verifying the area of their homes. Home prices are not based on, and MainVue cannot assure, final home square footage. Photography is for illustrative purposes and should be used as a guide.

