

MORE WITH MAINVUE SALES EVENT!

✔ MORE Luxury. ✔ MORE Value. ✔ MORE Style.

Now Save **MORE** with our Limited-Time Sales Event!

ACT NOW! Sale Ends May 15th.

MOVE-IN READY!

LUXURY INCLUSIONS ARE OUR STANDARD

WAS:
~~—\$929,995—~~

NOW:
\$873,995

SAVE:
\$56,000

Tolt River Terrace / **Lot 127** / 31894 Valley Vista St, Carnation

Spruce Home Design / 2284 Square Feet / 4 Beds / 3.5 Baths / 2 Cars



* This home is built in the MFT Facade Color Scheme

1.800.764.8171 MAINVUEHOMES.COM

More with MainVue Sales Event pricing is only available on select homes and cannot be combined with any other offers. Purchase Contracts must be written between April 10th, 2026 and May 15th, 2026. Pricing, availability, and specifications are subject to change without notice. Photography is for illustrative purposes only and should not be used as a guide. Represented by TeamBuilder KW. Effective 3.31.2026

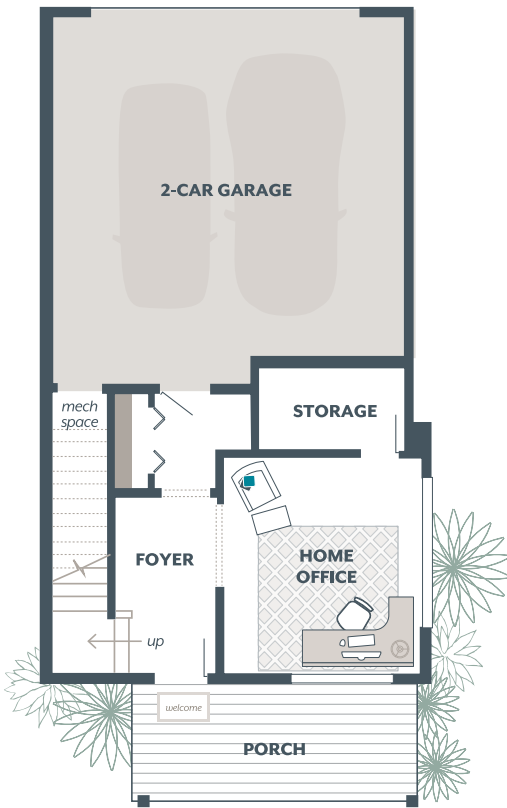
MAINVUE
HOMES

Spruce Townhome Design

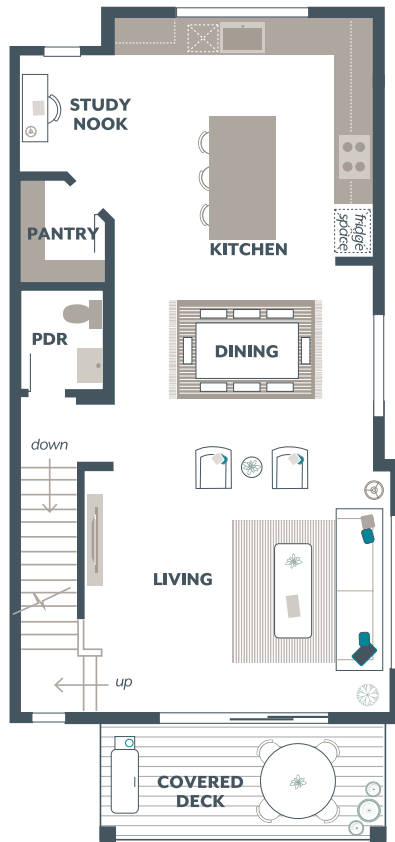
Included Selections:

Exterior Color Scheme: , Interior Color Scheme Olivine, Facade: MFT, Bedroom 4 with Bath

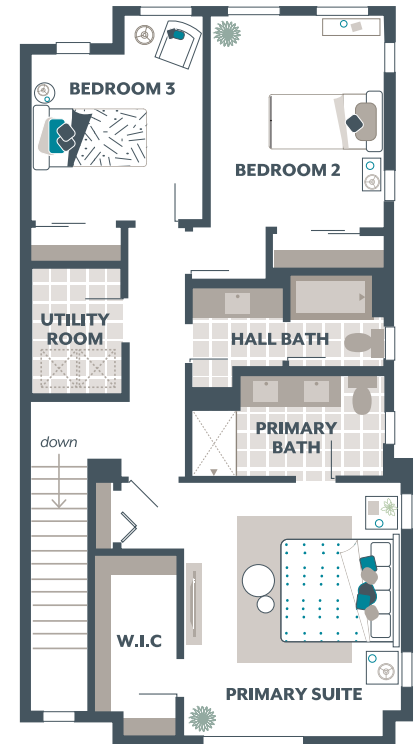
Lower Floor



Main Floor



Upper Floor



The finished square footage areas provided are calculated based on ANSI Z765-2013 standards as commissioned by the National Association of Home Builders (NAHB). Finished square footage calculations are typically made based on plan dimensions only. Finished square footages vary based on elevation styles, plan options, final home design, variances that arise during construction and other factors. Plans, square footage and house availability may vary by community and are subject to change. Buyers are responsible for verifying the area of their homes. Home prices are not based on, and MainVue cannot assure, final home square footage. Photography is for illustrative purposes and should be used as a guide.

