

# MORE WITH MAINVUE SALES EVENT!

✔ MORE Luxury. ✔ MORE Value. ✔ MORE Style.

Now Save **MORE** with our Limited-Time Sales Event!

**ACT NOW!** Sale Ends May 15th.

**MOVE-IN READY!**

LUXURY INCLUSIONS ARE OUR STANDARD

**WAS:**  
~~-\$2,483,995~~

**NOW:**  
\$2,363,995

**SAVE:**  
\$120,000

Woodinville Crossing / **Lot 2** / 12411 NE 157th PL, Woodinville

**Lotus Home Design** / 4239 Square Feet / 4 Beds / 4.5 Baths / 2 Cars



\* Image shows the Lotus C in Jade Daybreak color scheme and should be used as a guide only.

\* This home is built in the C Facade Opal Twilight Color Scheme

**1.800.764.8171 MAINVUEHOMES.COM**

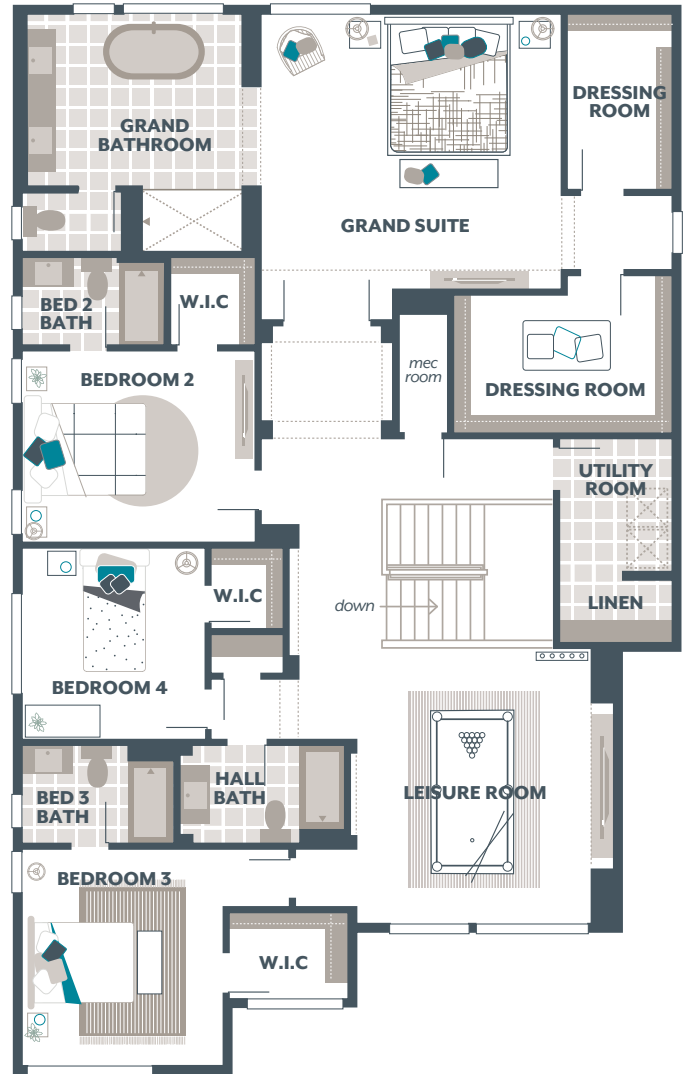
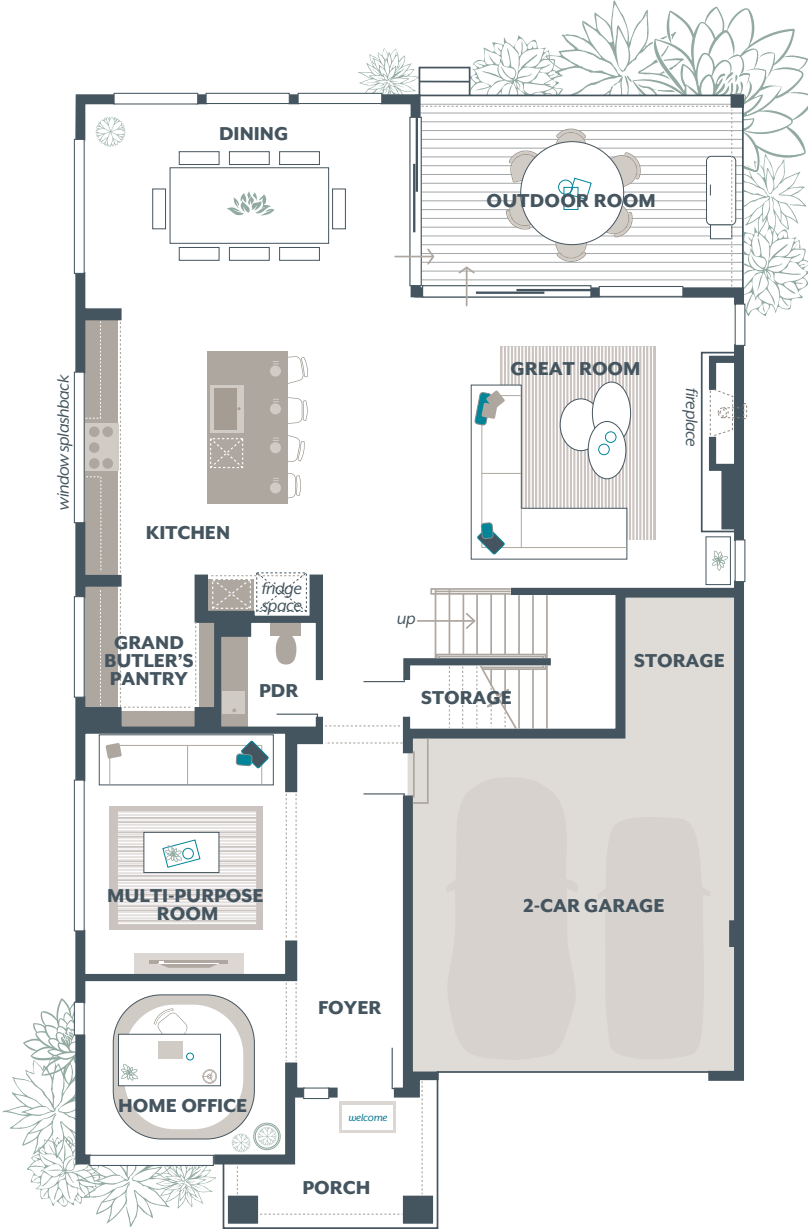
More with MainVue Sales Event pricing is only available on select homes and cannot be combined with any other offers. Purchase Contracts must be written between April 10th, 2026 and May 15th, 2026. Pricing, availability, and specifications are subject to change without notice. Photography is for illustrative purposes only and should not be used as a guide. Represented by TeamBuilder KW. Effective 3.31.2026

**MAINVUE**  
HOMES

# Lotus Home Design

## Included Selections:

Exterior Color Scheme: Opal Twilight, Interior Color Scheme Opal, Facade: C, Quartz Countertop in Hall Bath, Signature Outdoor Room Fireplace, Enclose Multi-Purpose Room with a Double Door



The finished square footage areas provided are calculated based on ANSI Z765-2013 standards as commissioned by the National Association of Home Builders (NAHB). Total square footage used in marketing includes the outdoor room. Finished square footage calculations are typically made based on plan dimensions only. Finished square footages vary based on elevation styles, plan options, final home design, variances that arise during construction and other factors. Plans, square footage and house availability may vary by community and are subject to change. Buyers are responsible for verifying the area of their homes. Home prices are not based on, and MainVue cannot assure, final home square footage. Photography is for illustrative purposes and should be used as a guide.

