

LIMITED-TIME

# INVENTORY CLEARANCE!

The savings are temporary...**ACT NOW** before 'later' becomes 'too late'!

**DON'T  
MISS  
OUT!**

**Move-in  
Ready!**

Contemporary New Home with private Covered  
Patio located off the Dining Room

## REDSTONE AT WHISKEY RIDGE

Lot 72 | 8865 44TH PL NE, Marysville

**WAS:** ~~\$779,495~~

**NOW:** \$724,495

**SAVE: \$55,000**



## SALISH HOME DESIGN

2245 Square Feet, 4 Bedrooms, 2.5 Baths, 2 Car Garage

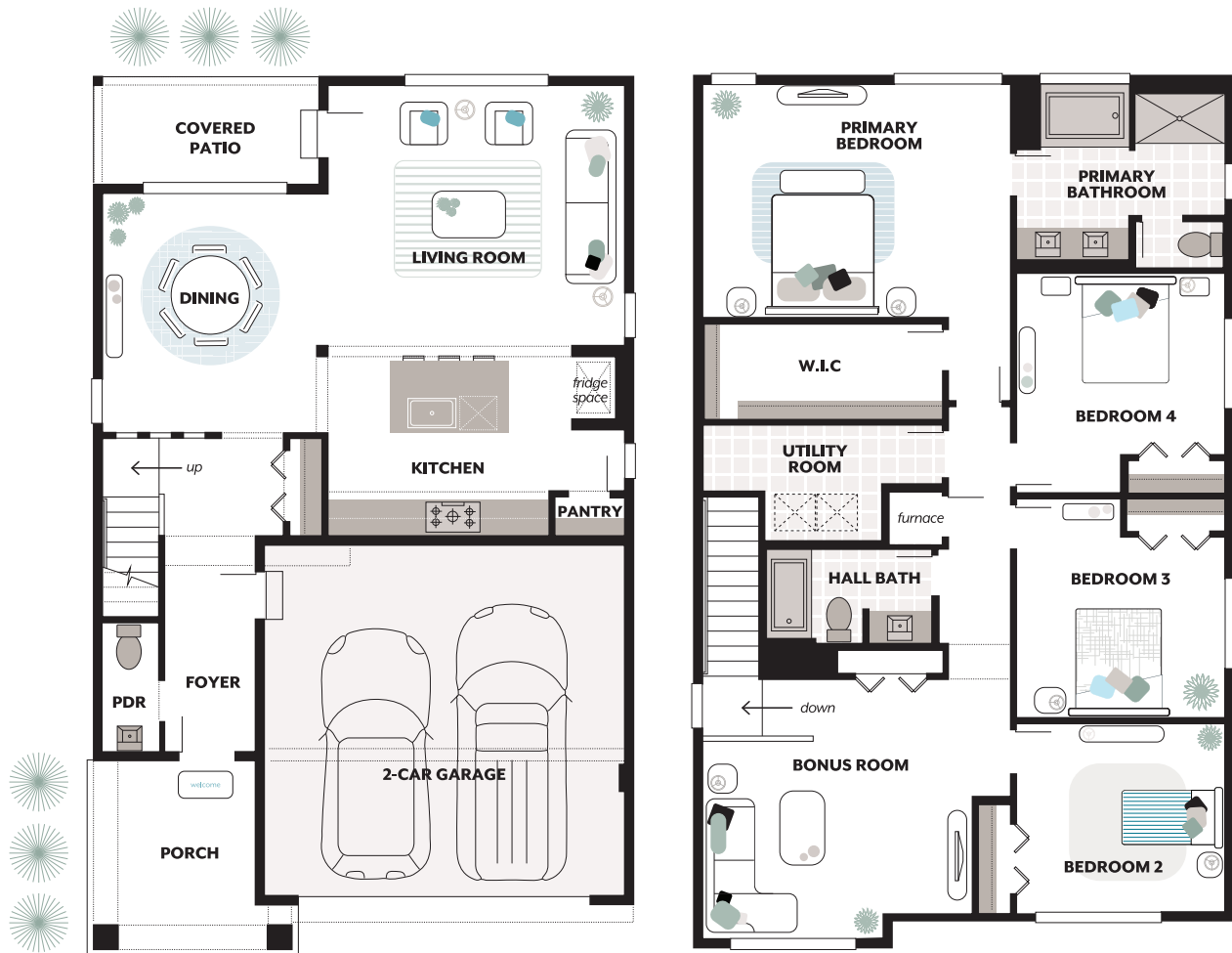
**essence**  
by MainVue

EssenceByMainVue.com | 1.800.764.8171

MLS# 2303211. Represented by TeamBuilder KW. Limited-Time Inventory Clearance Sale available only on select move-in ready homes. Purchase contracts must be written between 9.5.2025 - 10.6.2025. Cannot be combined with any other offers. Pricing, availability, and specification are subject to change without notice. Effective 9.4.2025

## Included Features:

Exterior Style: GA, Exterior Color Scheme: Meadow Sunrise, Interior Color Scheme: Stormwake



Pricing, availability, and specification are subject to change without notice. The finished square footage areas provided are calculated based on ANSI Z765-2013 standards as commissioned by the National Association of Home Builders (NAHB). Total square footage used in marketing includes the outdoor room. Finished square footage calculations are typically made based on plan dimensions only. Finished square footages vary based on elevation styles, plan options, final home design, variances that arise during construction and other factors. Plans, square footage and house availability may vary by community and are subject to change. Buyers are responsible for verifying the area of their homes. Home prices are not based on, and MainVue cannot assure, final home square footage. Photography is for illustrative purposes and should be used as a guide.

