



**Move-in  
Ready!**

**FREE** New Home Introductory Offer

**\$30,000 Your Way!\***

Limited Time!

Offer Ends 3.2.2025

Mix-and-match to create a \$30,000 move-in package suited for you. Buydown your mortgage rate and enjoy monthly savings, apply it toward allowable closing costs, outfit your new home with a washer, dryer, and refrigerator appliance package, add custom blinds, or ask us about additional options. **The choice is yours!** Offer ends 3.2.2025.

Home Office, Supersized Kitchen Island, Walk in Pantry, and centrally placed upper floor Bonus

**REDSTONE AT WHISKEY RIDGE**

Lot 89 | 4525 88TH AVE NE, Marysville | \$861,495

**MERIDIAN HOME DESIGN**

2522 Square Feet, 4 Bedrooms, 2.5 Baths, 2 Car Garage



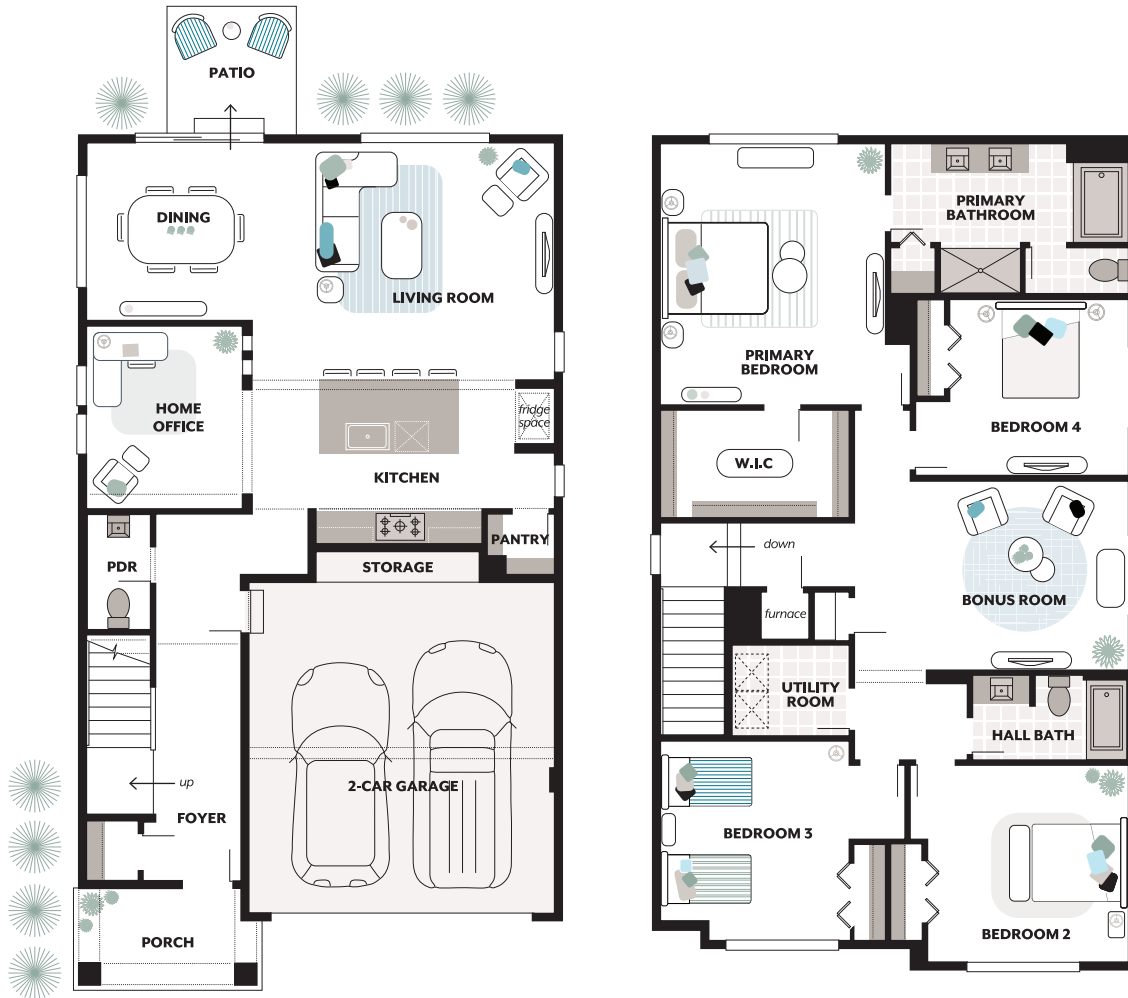
**essence**  
by MainVue

EssenceByMainVue.com | 1.800.764.8171

MLS# 2303209. Represented by TeamBuilder KW. Pricing, availability, and specification are subject to change without notice.  
\*Free Home Introductory Offer is only available on Essence homes by MainVue that are under contract between January 24th, 2025 - March 2nd, 2025. The \$30,000 is applied at closing towards allowable closing costs and buyer selections. Custom blinds to be installed after closing. Effective 1.23.2025

**Included Features:**

Exterior Style: GH, Exterior Color Scheme: Meadow Sunrise, Interior Color Scheme: Sky



Pricing, availability, and specification are subject to change without notice. The finished square footage areas provided are calculated based on ANSI Z765-2013 standards as commissioned by the National Association of Home Builders (NAHB). Total square footage used in marketing includes the outdoor room. Finished square footage calculations are typically made based on plan dimensions only. Finished square footages vary based on elevation styles, plan options, final home design, variances that arise during construction and other factors. Plans, square footage and house availability may vary by community and are subject to change. Buyers are responsible for verifying the area of their homes. Home prices are not based on, and MainVue cannot assure, final home square footage. Photography is for illustrative purposes and should be used as a guide.

