

**Move-in
Ready!**

Contemporary New Home with private Covered Patio located off the Dining Room

REDSTONE AT WHISKEY RIDGE

Lot 11 | 8848 44TH PL NE, Marysville | \$794,495

SALISH HOME DESIGN

2245 Square Feet, 4 Bedrooms, 2.5 Baths, 2 Car Garage



OFFER ENDS APRIL 25th!

FREE HOME PACKAGE!*

FREE Kitchenaid Refrigerator, **FREE** Whirlpool Washer, **FREE** Whirlpool Dryer, **FREE** \$20,000 to Use Your Way, **FREE** \$10,000 Towards Custom Blinds. *Restrictions apply

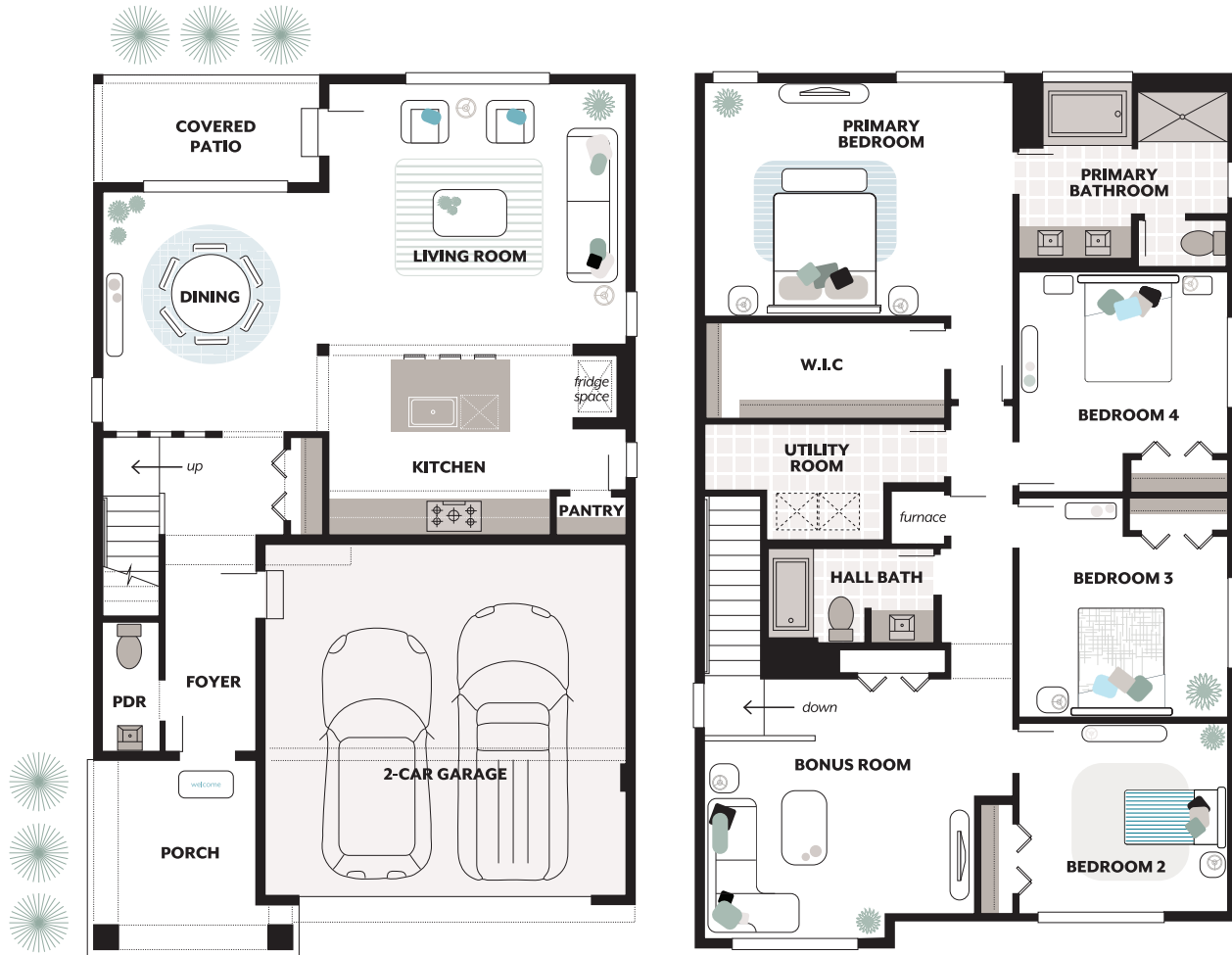
essence
by MainVue

EssenceByMainVue.com | 1.800.764.8171

MLS# 2309672. *Limited Time Free Home Package is only available on select Essence homes at Redstone at Whiskey Ridge. Purchase Contracts must be written between March 25, 2026 and April 25, 2026. Seller credit applied at closing toward allowable closing costs, rate buydown, pre-pays, and more. Pricing, availability, and specifications are subject to change without notice. Represented by TeamBuilder KW. Effective 3.23.2026.

Included Features:

Exterior Style: D, Exterior Color Scheme: Sky Nightfall, Interior Color Scheme: Sky



Pricing, availability, and specification are subject to change without notice. The finished square footage areas provided are calculated based on ANSI Z765-2013 standards as commissioned by the National Association of Home Builders (NAHB). Total square footage used in marketing includes the outdoor room. Finished square footage calculations are typically made based on plan dimensions only. Finished square footages vary based on elevation styles, plan options, final home design, variances that arise during construction and other factors. Plans, square footage and house availability may vary by community and are subject to change. Buyers are responsible for verifying the area of their homes. Home prices are not based on, and MainVue cannot assure, final home square footage. Photography is for illustrative purposes and should be used as a guide.

