



**Move-in
Ready!**

Home Office, Supersized Kitchen Island, Walk-In Pantry,
and centrally placed upper floor Bonus Room

REDSTONE AT WHISKEY RIDGE

Lot 89 | 4525 88th Ave NE, Marysville | \$861,495

MERIDIAN HOME DESIGN:

2,522 Square Feet, 4 Bedrooms, 2.5 Baths, 2 Car Garage







essence
by MainVue

EssenceByMainVue.com | 1.800.764.8171

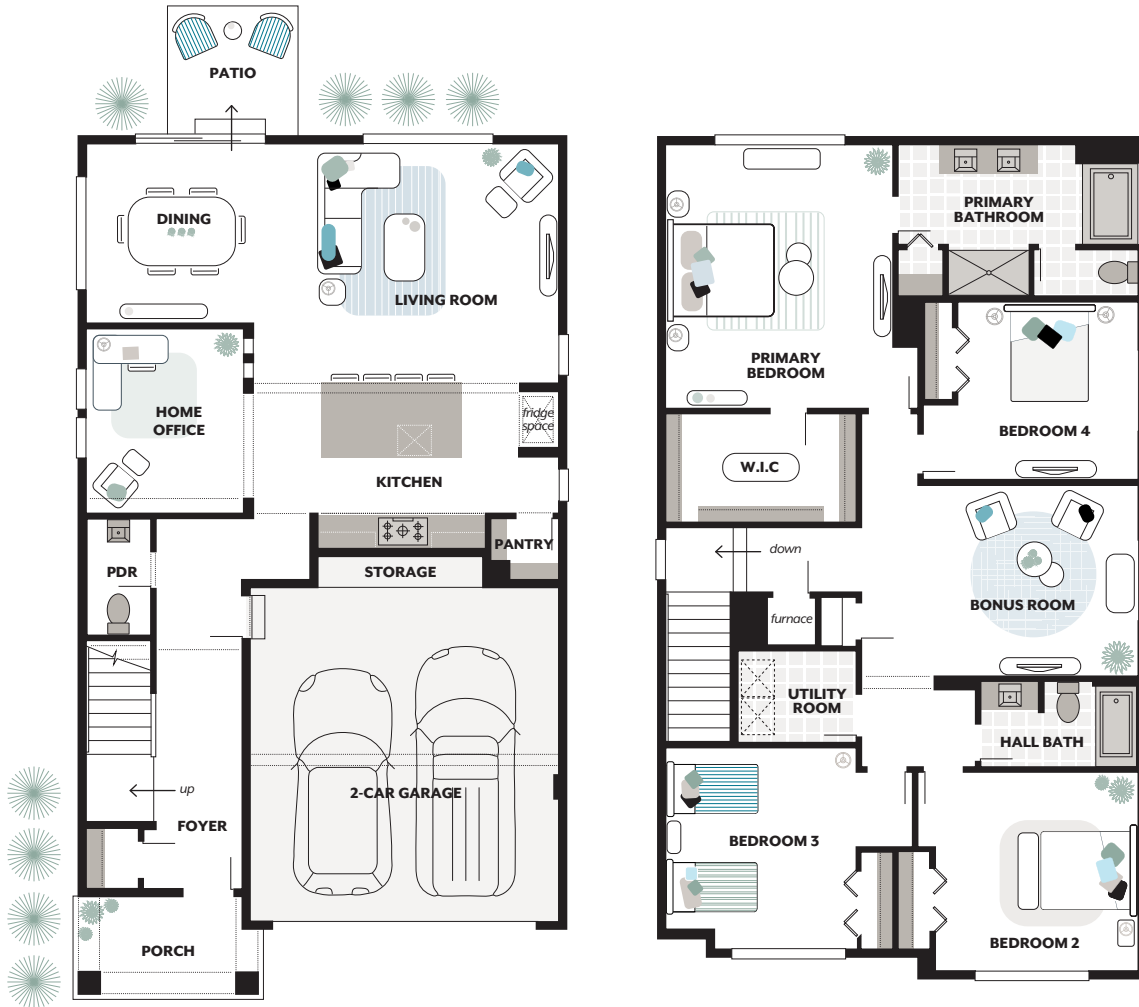
MLS#: 2303209. Represented by TeamBuilder KW. Prices and availability are subject to change without notice. Photos are for illustrative purposes and should be used as a guide. Please speak with an Essence Sales Consultant for more details on this home. Effective 10.18.2024

MERIDIAN HOME DESIGN

   
2,522 SF 4 Beds 2.5 Baths 2 Cars

Included Features:

Exterior Style: GH, Exterior Color Scheme: Meadow Sunrise, Interior Color Scheme: Sky
Full-Height Tile Backsplash in Kitchen, Large Format Porcelain Tile Walls in Primary Bathroom Shower,
Designer Lighting Package



Pricing, availability, and specification are subject to change without notice. The finished square footage areas provided are calculated based on ANSI Z765-2013 standards as commissioned by the National Association of Home Builders (NAHB). Total square footage used in marketing includes the outdoor room. Finished square footage calculations are typically made based on plan dimensions only. Finished square footages vary based on elevation styles, plan options, final home design, variances that arise during construction and other factors. Plans, square footage and house availability may vary by community and are subject to change. Buyers are responsible for verifying the area of their homes. Home prices are not based on, and MainVue cannot assure, final home square footage. Photography is for illustrative purposes and should be used as a guide.

