



LIMITED-TIME

# INVENTORY CLEARANCE!

The savings are temporary...**ACT NOW** before 'later' becomes 'too late'!

**MOVE-IN READY!**

THREE LEVEL HOME DESIGN WITH RECREATION ROOM, HOME OFFICE  
AND MULTI-PURPOSE ROOM

WAS:  
~~\$1,984,995~~

NOW:  
\$1,864,995

SAVE:  
**\$120,000**

Dashwood at May Creek / **Lot 14** / 8670 121st Pl SE, Newcastle

**Spirea Home Design** / 3832 Square Feet / 5 Beds / 3.5 Baths / 2 Cars



\* Image shows the Juniper S in Jade Twilight color scheme and should be used as a guide only.

\* This home is built in the GA Facade Shale Twilight Color Scheme

**1.800.764.8171 MAINVUEHOMES.COM**

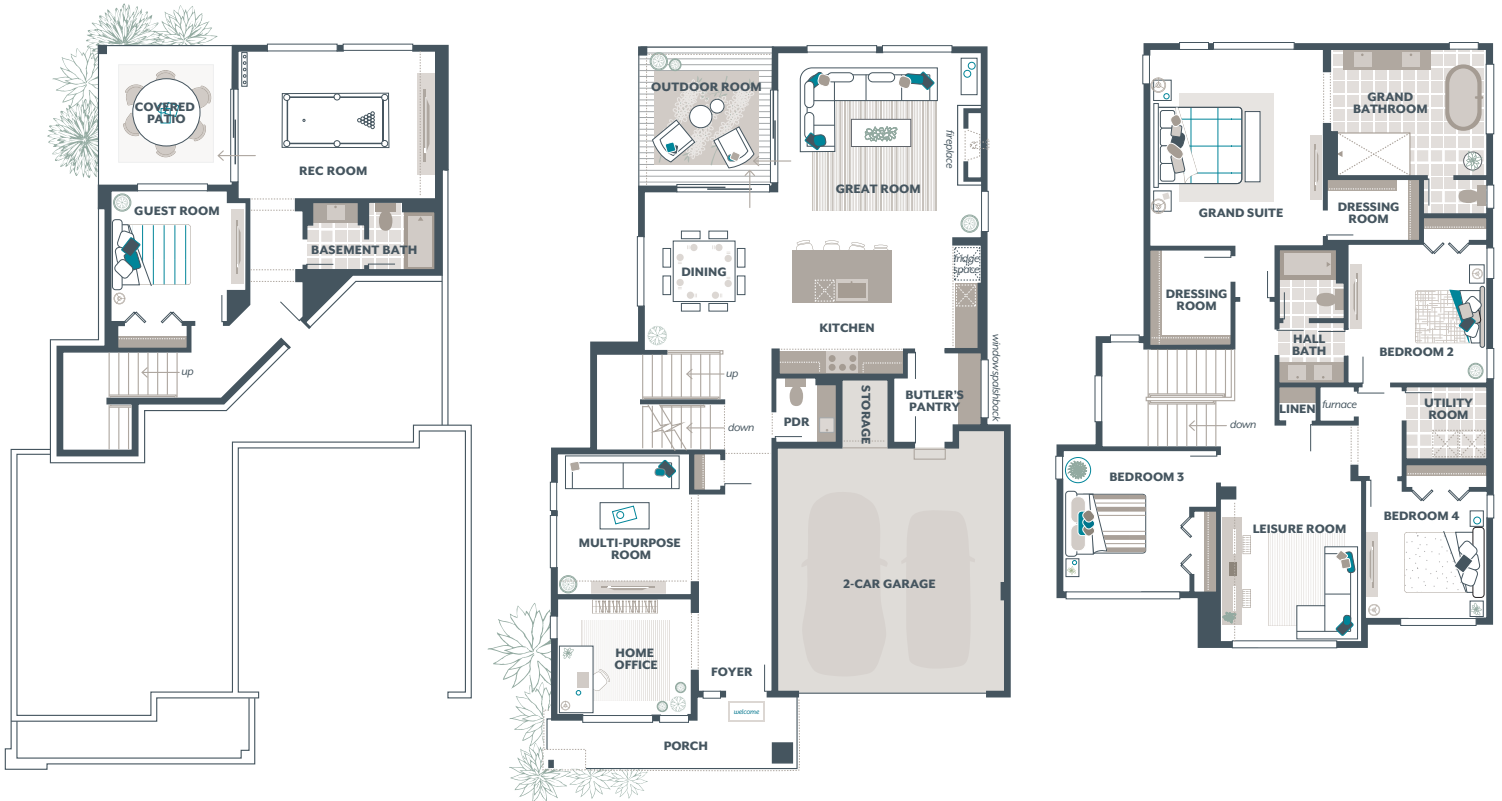
MLS# 2217019. Represented by TeamBuilder KW. Limited-Time Inventory Clearance Sale available only on select move-in ready homes. Purchase contracts must be written between 9.5.2025 - 11.2.2025. Cannot be combined with any other offers. Pricing, availability, and specification are subject to change without notice. Photography is for illustrative purposes and should be used as a guide. Effective 10.3.2025

**MAINVUE**  
HOMES

# Spirea Home Design

## Included Selections:

Exterior Color Scheme: Shale Twilight, Interior Color Scheme Shale, Facade: GA



The finished square footage areas provided are calculated based on ANSI Z765-2013 standards as commissioned by the National Association of Home Builders (NAHB). Total square footage used in marketing includes the outdoor room. Finished square footage calculations are typically made based on plan dimensions only. Finished square footages vary based on elevation styles, plan options, final home design, variances that arise during construction and other factors. Plans, square footage and house availability may vary by community and are subject to change. Buyers are responsible for verifying the area of their homes. Home prices are not based on, and MainVue cannot assure, final home square footage. Photography is for illustrative purposes and should be used as a guide.

