



LIMITED-TIME

INVENTORY CLEARANCE!

The savings are temporary...**ACT NOW** before 'later' becomes 'too late'!

MOVE-IN READY!

SOARING TWO-STORY FOYER, GREAT ROOM, AND DINING PLUS GRAND BUTLER'S PANTRY, MULTI-PURPOSE ROOM, AND SIGNATURE OUTDOOR ROOM AND SO MUCH MORE!

WAS:
~~\$917,995~~

NOW:
\$853,995

SAVE:
\$64,000

MainVue at McCormick / **Lot 5-120** / 3315 SW Mooring Ln, Port Orchard

Ivy Home Design / 4109 Square Feet / 4 Beds / 3.5 Baths / 3 Cars



* Image shows the Ivy N Facade in Opal Twilight color scheme and should be used as a guide only.

* This home is built in the K Facade Copper Twilight Color Scheme

1.800.764.8171 MAINVUEHOMES.COM

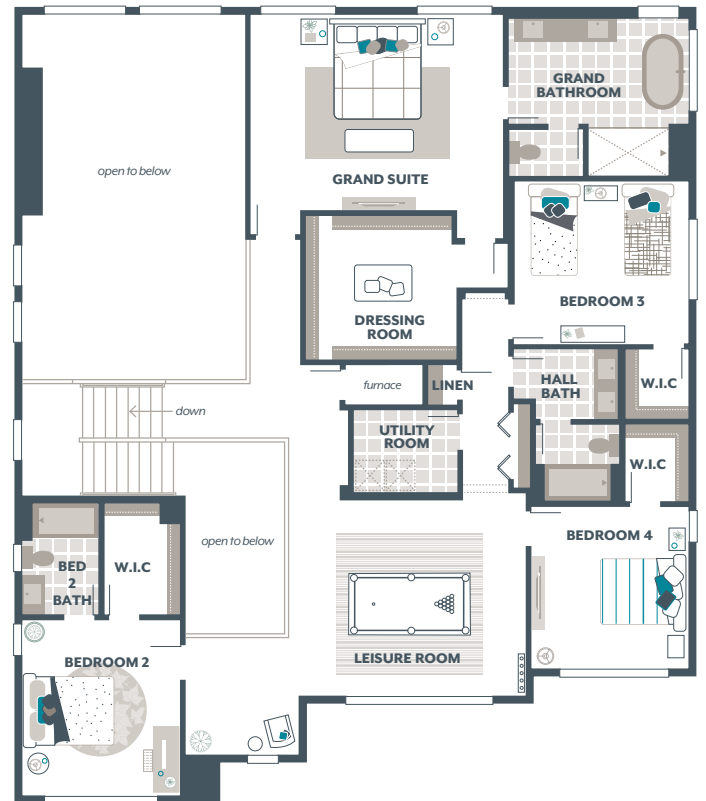
MLS# 2163330. Represented by TeamBuilder KW. Limited-Time Inventory Clearance Sale available only on select move-in ready homes. Purchase contracts must be written between 9.5.2025 - 10.6.2025. Cannot be combined with any other offers. Pricing, availability, and specification are subject to change without notice. Photography is for illustrative purposes and should be used as a guide. Effective 8.29.2025

MAINVUE
HOMES

Ivy Home Design

Included Selections:

Exterior Color Scheme: Copper Twilight, Interior Color Scheme Carbon, Facade: K



The finished square footage areas provided are calculated based on ANSI Z765-2013 standards as commissioned by the National Association of Home Builders (NAHB). Total square footage used in marketing includes the outdoor room. Finished square footage calculations are typically made based on plan dimensions only. Finished square footages vary based on elevation styles, plan options, final home design, variances that arise during construction and other factors. Plans, square footage and house availability may vary by community and are subject to change. Buyers are responsible for verifying the area of their homes. Home prices are not based on, and MainVue cannot assure, final home square footage. Photography is for illustrative purposes and should be used as a guide.

