

LIMITED-TIME

INVENTORY CLEARANCE!

The savings are temporary...**ACT NOW** before 'later' becomes 'too late'!

MOVE-IN READY!

LUXURY INCLUSIONS ARE OUR STANDARD!

WAS:
~~\$1,164,995~~

NOW:
\$1,083,995

SAVE:
\$81,000

Redstone at Whiskey Ridge / **Lot 2-29** / 4673 88th Dr NE, Marysville

Lotus Home Design / 4239 Square Feet / 4 Beds / 4.5 Baths / 2 Cars



* This home is built in the C Facade Pewter Daybreak Color Scheme

1.800.764.8171 MAINVUEHOMES.COM

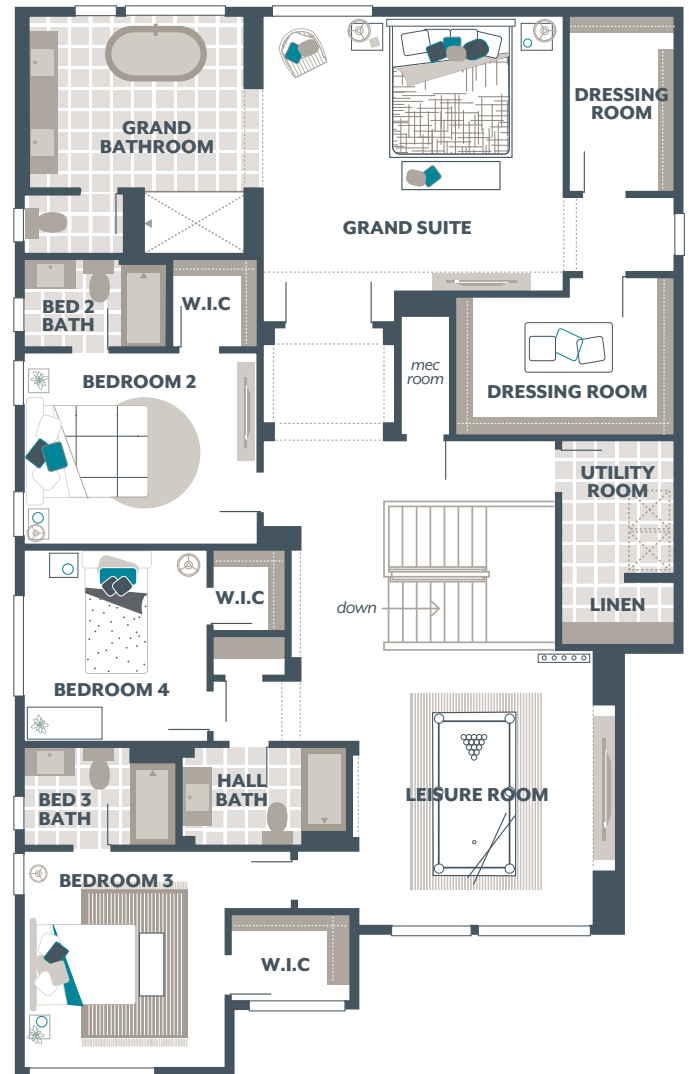
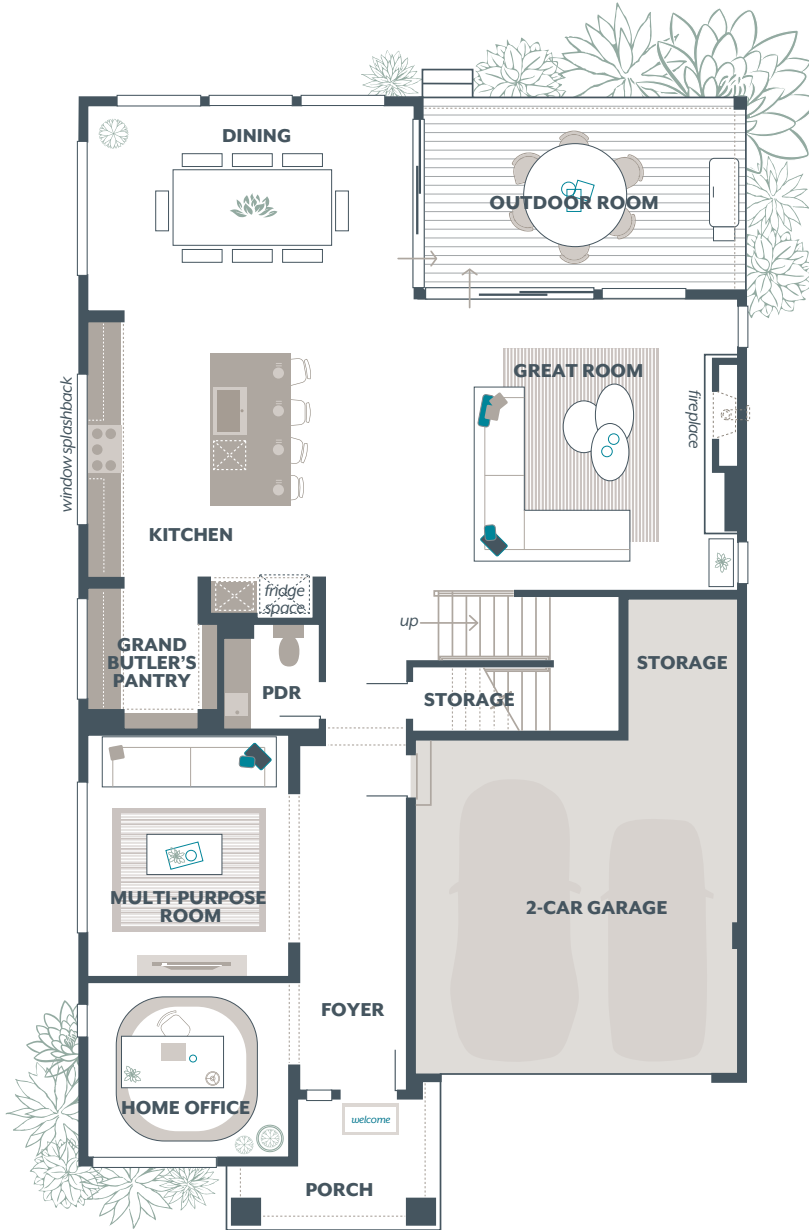
MLS# 2377188. Represented by TeamBuilder KW. Limited-Time Inventory Clearance Sale available only on select move-in ready homes. Purchase contracts must be written between 9.5.2025 - 10.6.2025. Cannot be combined with any other offers. Pricing, availability, and specification are subject to change without notice. Photography is for illustrative purposes and should be used as a guide. Effective 8.29.2025

MAINVUE
HOMES

Lotus Home Design

Included Selections:

Exterior Color Scheme: Pewter Daybreak, Interior Color Scheme Slate, Facade: C, Signature Outdoor Room Fireplace, Enclose Multi-Purpose Room with a Double Door



The finished square footage areas provided are calculated based on ANSI Z765-2013 standards as commissioned by the National Association of Home Builders (NAHB). Total square footage used in marketing includes the outdoor room. Finished square footage calculations are typically made based on plan dimensions only. Finished square footages vary based on elevation styles, plan options, final home design, variances that arise during construction and other factors. Plans, square footage and house availability may vary by community and are subject to change. Buyers are responsible for verifying the area of their homes. Home prices are not based on, and MainVue cannot assure, final home square footage. Photography is for illustrative purposes and should be used as a guide.

