



LIMITED-TIME

INVENTORY CLEARANCE!

The savings are temporary...**ACT NOW** before 'later' becomes 'too late'!

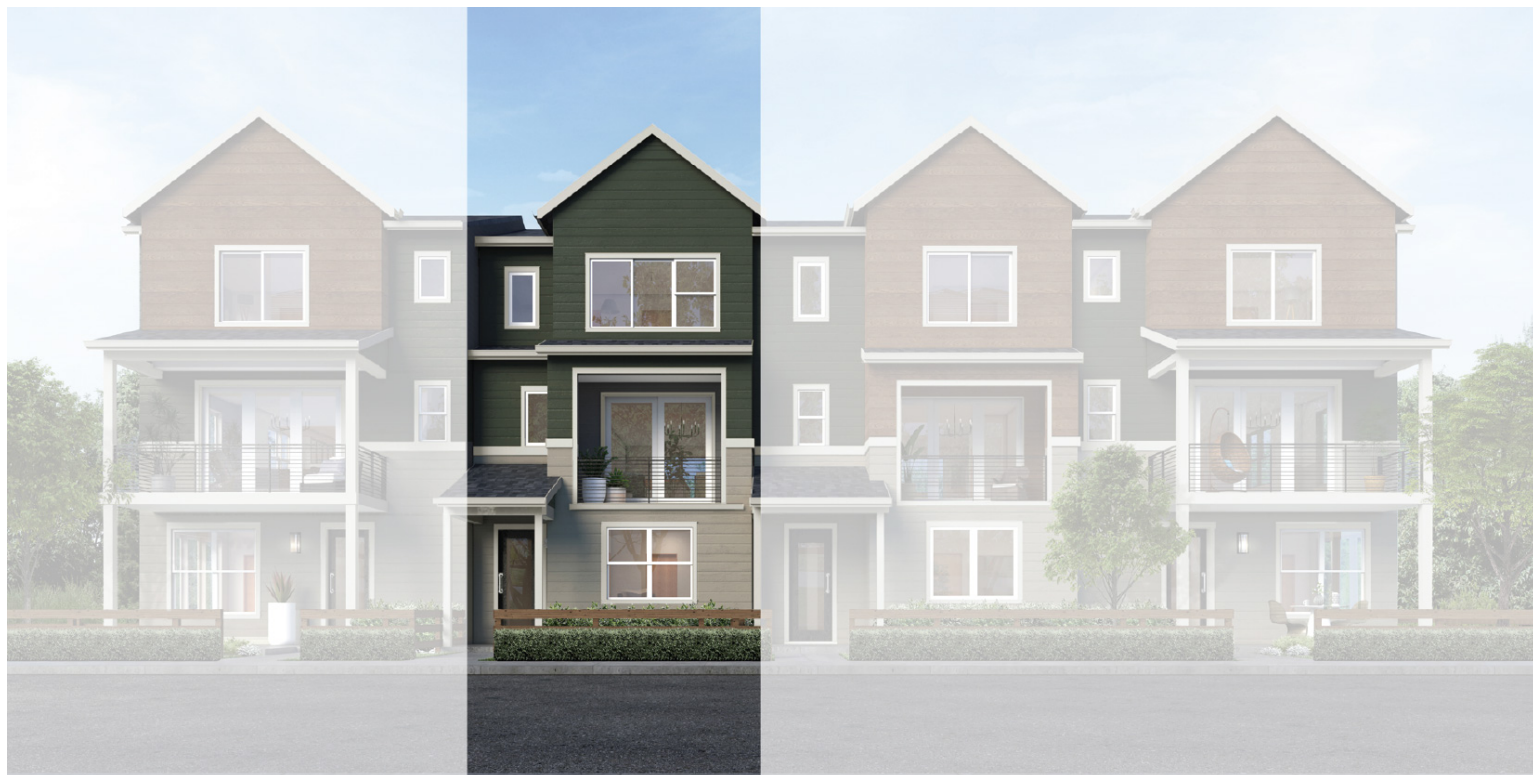
MOVE-IN READY!

LUXURY INCLUSIONS ARE OUR STANDARD!

WAS: \$762,995	NOW: \$709,995	SAVE: \$53,000
-------------------------------------	--------------------------	--------------------------

Tolt River Terrace / **Lot 95** / 3623 Grace Ave, Carnation

Lilac Home Design / 1880 Square Feet / 4 Beds / 3.5 Baths / 2 Cars



* This home is built in the MFT Facade Jade Daybreak Color Scheme

1.800.764.8171 **MAINVUEHOMES.COM**

MLS# 2332590. Represented by TeamBuilder KW. Limited-Time Inventory Clearance Sale available only on select move-in ready homes. Purchase contracts must be written between 9.5.2025 - 10.6.2025. Cannot be combined with any other offers. Pricing, availability, and specification are subject to change without notice. Photography is for illustrative purposes and should be used as a guide. Effective 8.29.2025

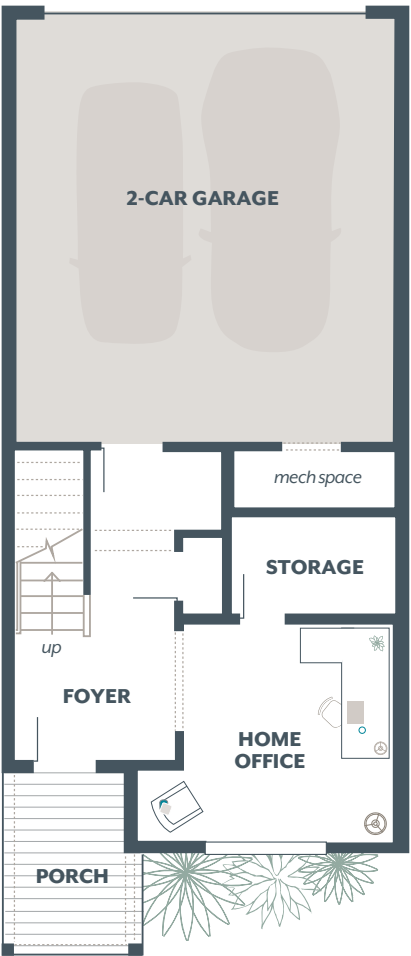
MAINVUE
HOMES

Lilac Townhome Design

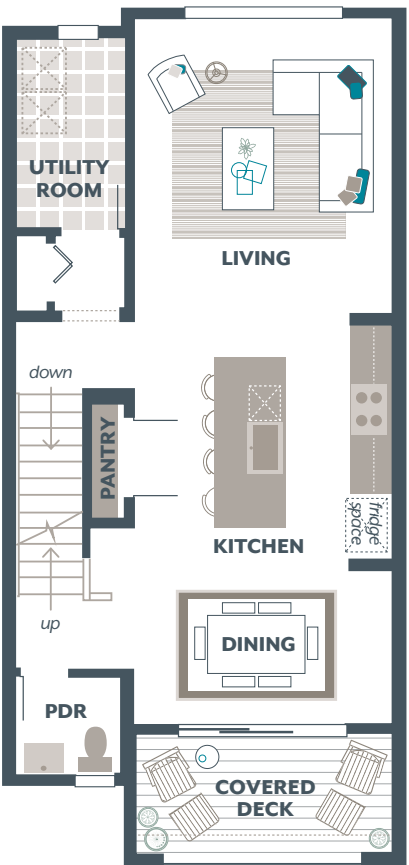
Exterior Color Scheme: Jade Daybreak, Interior Color Scheme: Diamond, Facade: MFT, Bedroom 4 with Bath

Included Selections:

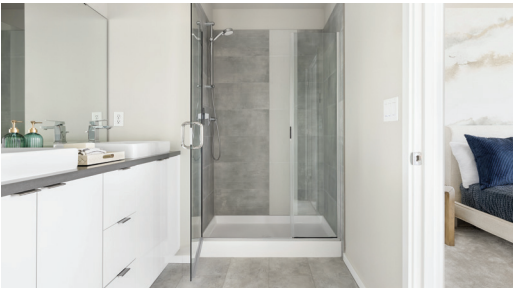
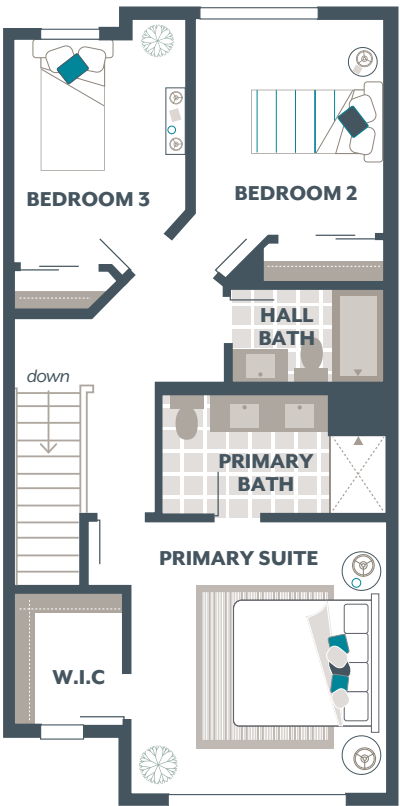
Lower Floor



Main Floor



Upper Floor



The finished square footage areas provided are calculated based on ANSI Z765-2013 standards as commissioned by the National Association of Home Builders (NAHB). Finished square footage calculations are typically made based on plan dimensions only. Finished square footages vary based on elevation styles, plan options, final home design, variances that arise during construction and other factors. Plans, square footage and house availability may vary by community and are subject to change. Buyers are responsible for verifying the area of their homes. Home prices are not based on, and MainVue cannot assure, final home square footage. Photography is for illustrative purposes and should be used as a guide.

