

MOVE-IN READY!

**SIGNATURE OUTDOOR ROOM, HOME OFFICE, 3/4 BATH ON
MAIN FLOOR, WALK-IN PANTRY, AND MORE!**

WAS: \$1,149,995	NOW: \$1,114,995	SAVE: \$35,000
---------------------------------------	----------------------------	--------------------------

Tolt River Terrace / **Lot 1** / 31934 Victoria St, Carnation

Abelia Home Design / 2727 Square Feet / 4 Beds / 2.75 Baths / 2 Cars

LIMITED- TIME
SAVE
\$35,000
ON THIS HOME!*

** Image shows the Abelia XB Facade in Opal Twilight color scheme and should be used as a guide only.*

* This home is built in the XB Facade Opal Twilight Color Scheme

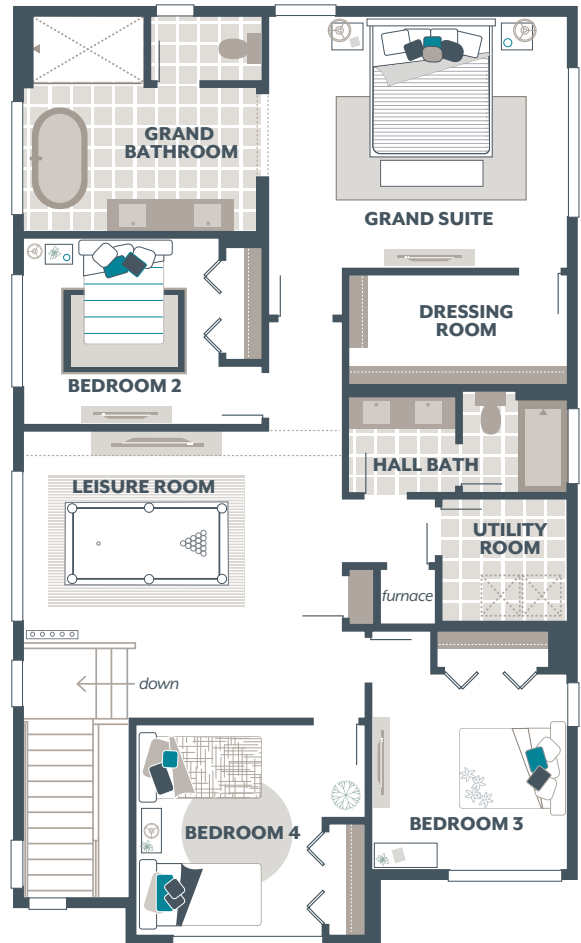
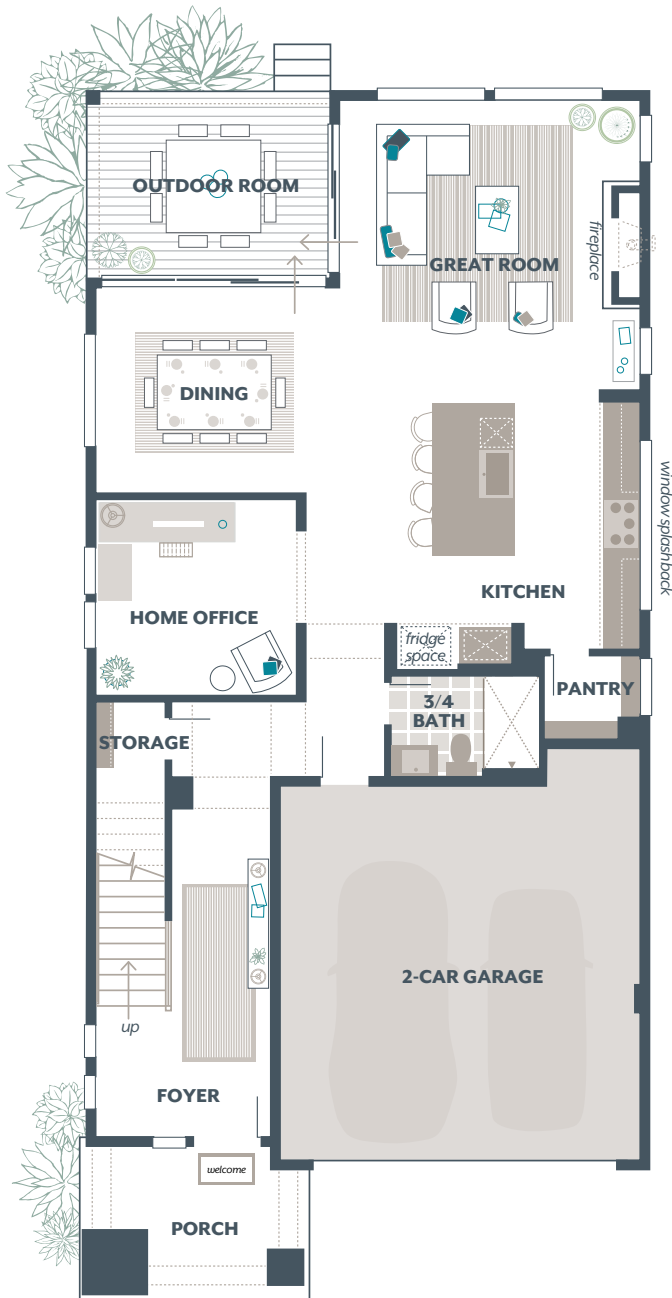
1.800.764.8171 MAINVUEHOMES.COM

MLS# 2211945. Represented by TeamBuilder KW. Pricing, availability, and specification are subject to change without notice. *Limited-Time Spring Sale is only available on select move-in ready homes at Tolt River Terrace in Carnation to buyers signing a new home contract with MainVue Homes between 5.16.2025-6.8.2025. Photography is for illustrative purposes and should be used as a guide. Effective 5.16.2025

Abelia Home Design

Included Selections:

Exterior Color Scheme: Opal Twilight, Interior Color Scheme Opal, Facade: XB, 3/4 Bath in lieu of Powder Room



The finished square footage areas provided are calculated based on ANSI Z765-2013 standards as commissioned by the National Association of Home Builders (NAHB). Total square footage used in marketing includes the outdoor room. Finished square footage calculations are typically made based on plan dimensions only. Finished square footages vary based on elevation styles, plan options, final home design, variances that arise during construction and other factors. Plans, square footage and house availability may vary by community and are subject to change. Buyers are responsible for verifying the area of their homes. Home prices are not based on, and MainVue cannot assure, final home square footage. Photography is for illustrative purposes and should be used as a guide.

