

**MOVE-IN READY!**

**LUXURY INCLUSIONS ARE OUR STANDARD**

—

**Now Only \$1,398,995**

Clark Lake Ridge / **Lot 12** / 11807 SE 242nd Pl, Kent

—

**Briar Home Design** / 4055 Square Feet / 5 Beds / 4.5 Baths / 2 Cars



*\* Image shows the Briar XB Facade in Copper Daybreak color scheme and should be used as a guide only.*

\* This home is built in the XB Facade Carbon Twilight Color Scheme

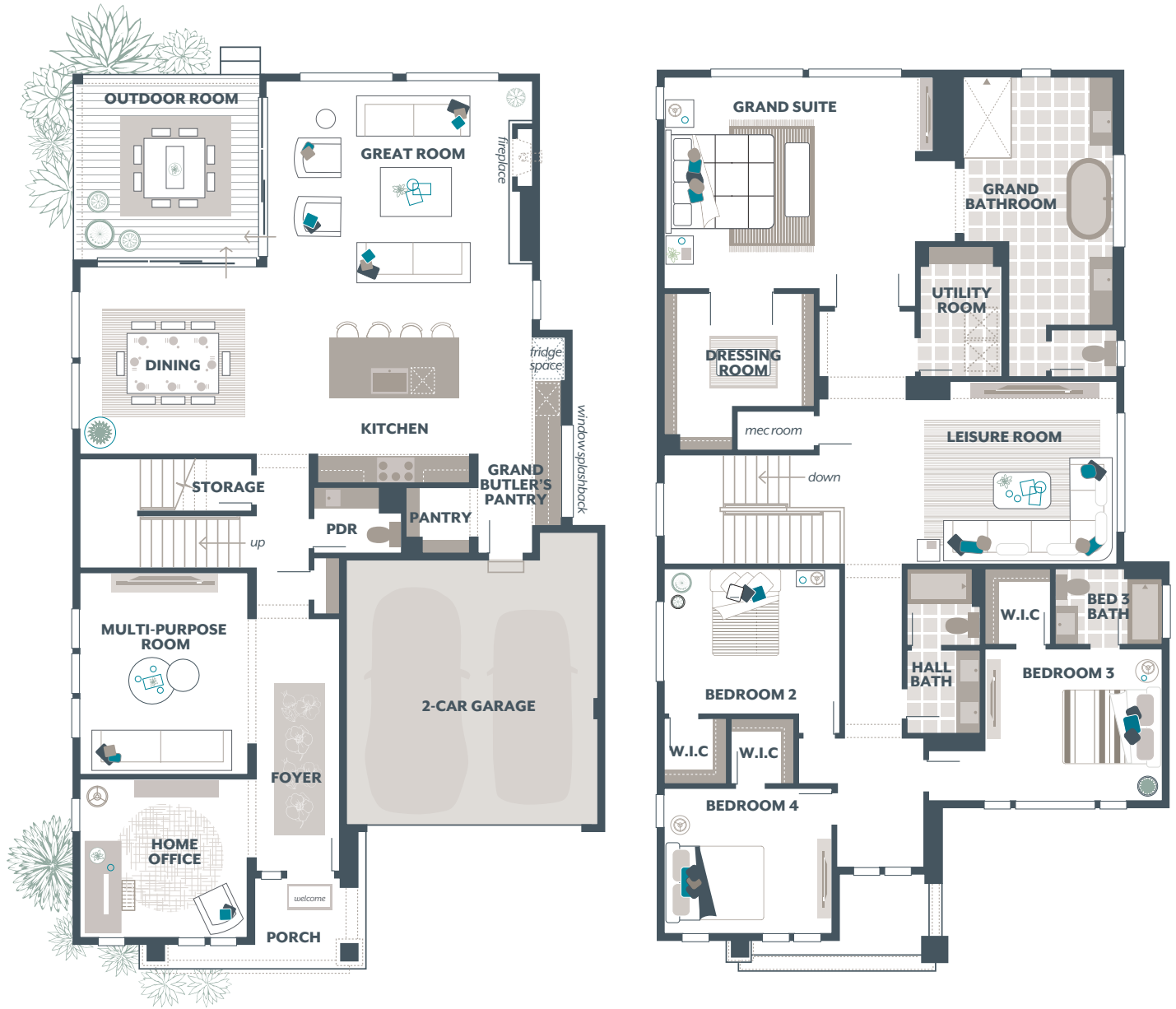
**1.800.764.8171 MAINVUEHOMES.COM**

MLS# 2451420. Represented by TeamBuilder KW. Prices and availability are subject to change without notice. Photos are for illustrative purposes and should be used as a guide. Please speak with a MainVue Sales Consultant for more details on this home. Effective 6.9.2026

# Briar Home Design

## Included Selections:

Exterior Color Scheme: Carbon Twilight, Interior Color Scheme Carbon, Facade: XB, Signature Outdoor Room Fireplace, Quartz Countertop in Hall Bath, Guest Room Suite in lieu of the Home Office and Multi-Purpose Room



The finished square footage areas provided are calculated based on ANSI Z765-2013 standards as commissioned by the National Association of Home Builders (NAHB). Total square footage used in marketing includes the outdoor room. Finished square footage calculations are typically made based on plan dimensions only. Finished square footages vary based on elevation styles, plan options, final home design, variances that arise during construction and other factors. Plans, square footage and house availability may vary by community and are subject to change.

Buyers are responsible for verifying the area of their homes. Home prices are not based on, and MainVue cannot assure, final home square footage. Photography is for illustrative purposes and should be used as a guide.

