

MOVE-IN READY!

HOME OFFICE AND 3/4 BATH ON MAIN, SIGNATURE OUTDOOR ROOM, BUTLER'S PANTRY, LEISURE ROOM, AND SO MUCH MORE!

Now Only \$1,199,995

Clark Lake Ridge / **Lot 4** / 11911 SE 242nd Pl, Kent

Cypress Home Design / 3295 Square Feet / 4 Beds / 2.75 Baths / 2 Cars



** Image shows the Cypress H Facade in Opal Twilight color scheme and should be used as a guide only.*

** This home is built in the H Facade Copper Twilight Color Scheme*

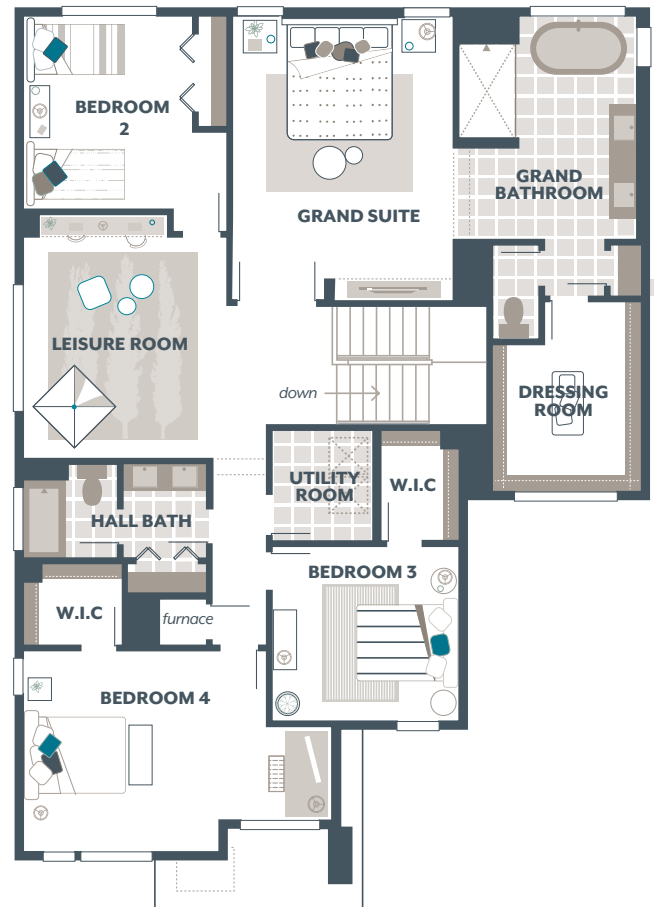
1.800.764.8171 MAINVUEHOMES.COM

MLS# 2355932. Represented by TeamBuilder KW. Prices and availability are subject to change without notice. Photos are for illustrative purposes and should be used as a guide. Please speak with a MainVue Sales Consultant for more details on this home. Effective 11.5.2025

Cypress Home Design

Included Selections:

Exterior Color Scheme: Copper Twilight, Interior Color Scheme Shale, Facade: H, Quartz Countertop in Hall Bath, Gas BBQ Stub at Outdoor Room, 3/4 Bath in lieu of Powder Room



The finished square footage areas provided are calculated based on ANSI Z765-2013 standards as commissioned by the National Association of Home Builders (NAHB). Total square footage used in marketing includes the outdoor room. Finished square footage calculations are typically made based on plan dimensions only. Finished square footages vary based on elevation styles, plan options, final home design, variances that arise during construction and other factors. Plans, square footage and house availability may vary by community and are subject to change.

Buyers are responsible for verifying the area of their homes. Home prices are not based on, and MainVue cannot assure, final home square footage. Photography is for illustrative purposes and should be used as a guide.

