

**MOVE-IN READY!**

**SIGNATURE OUTDOOR ROOM FIREPLACE, 3/4 BATH ON MAIN FLOOR, HOME OFFICE, ENCLOSED MULTI-PURPOSE ROOM, GRAND BUTLER'S PANTRY AND MORE!**

**Now Only \$1,419,995**

Eaglemont / **Lot 8-4** / 19186 133rd St SE, Monroe

**Lotus V5 Home Design** / 4250 Square Feet / 4 Beds / 4.75 Baths / 2 Cars



*\* Image shows the Lotus A Facade in Jade Daybreak color scheme and should be used as a guide only.*

\* This home is built in the A Facade Slate Daybreak Color Scheme

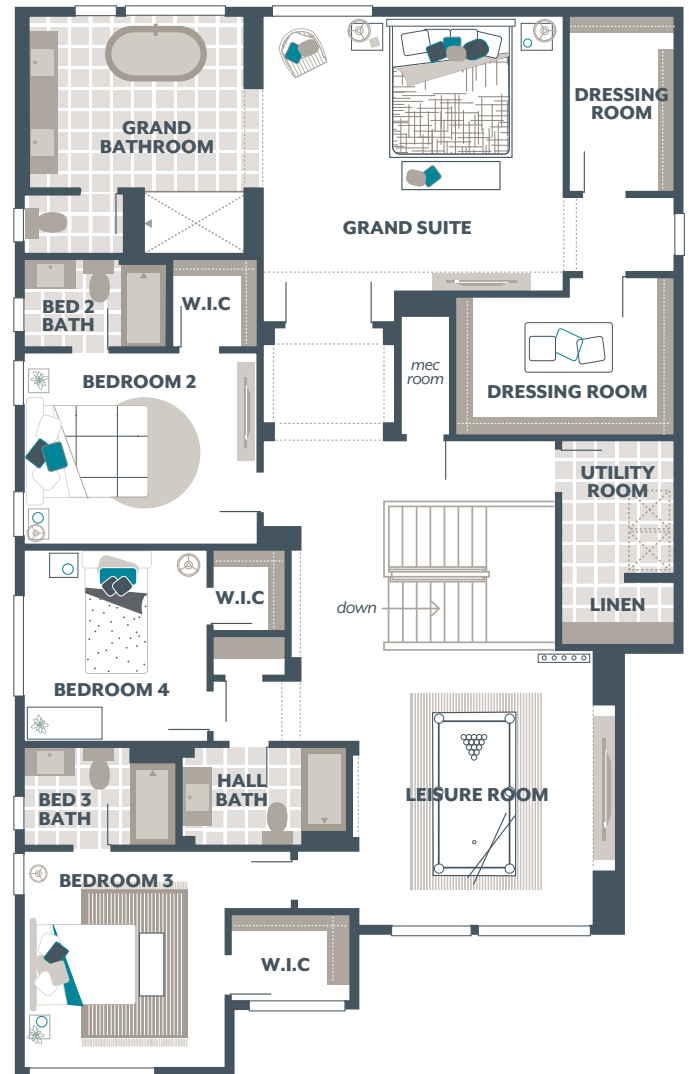
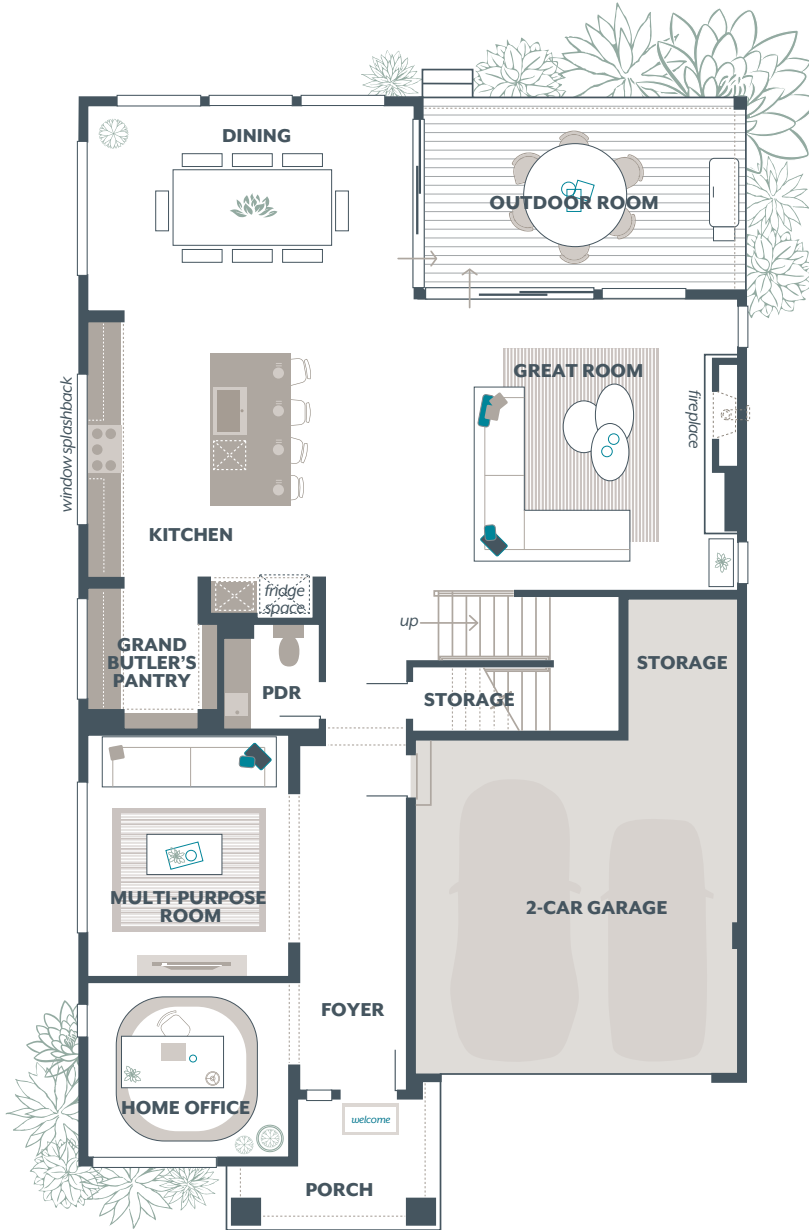
**1.800.764.8171 MAINVUEHOMES.COM**

MLS# 2332591. Represented by TeamBuilder KW. Prices and availability are subject to change without notice. Photos are for illustrative purposes and should be used as a guide. Please speak with a MainVue Sales Consultant for more details on this home. Effective 8.15.2025

# Lotus Home Design

## Included Selections:

Exterior Color Scheme: Slate Daybreak, Interior Color Scheme Slate, Facade: A, Holiday Lighting Package, Quartz Countertop in Hall Bath, Quartz Countertop in Bedroom 2 Bath, Timber-look Flooring in lieu of Carpet in Multi-Purpose Room, Gas BBQ Stub at Outdoor Room, Signature Outdoor Room Fireplace, Enclose Multi-Purpose Room with a Double Door



The finished square footage areas provided are calculated based on ANSI Z765-2013 standards as commissioned by the National Association of Home Builders (NAHB). Total square footage used in marketing includes the outdoor room. Finished square footage calculations are typically made based on plan dimensions only. Finished square footages vary based on elevation styles, plan options, final home design, variances that arise during construction and other factors. Plans, square footage and house availability may vary by community and are subject to change. Buyers are responsible for verifying the area of their homes. Home prices are not based on, and MainVue cannot assure, final home square footage. Photography is for illustrative purposes and should be used as a guide.

