

**MOVE-IN READY!**

**HOME OFFICE, 3/4 BATH ON MAIN, ENCLOSED MULTI-PURPOSE ROOM, SIGNATURE OUTDOOR ROOM, ELECTRIC CAR CHARGING OUTLET IN GARAGE, AND MORE!**

**Now Only \$1,572,995**

Edmonds Ridge / **Lot 1-13** / 5717 160TH ST SW, Edmonds

**Verbena Home Design** / 3561 Square Feet / 4 Beds / 2.75 Baths / 2 Cars



*\* Image shows the Verbena U Facade in Pewter color scheme and should be used as a guide only.*

\* This home is built in the U Facade Slate Twilight Color Scheme

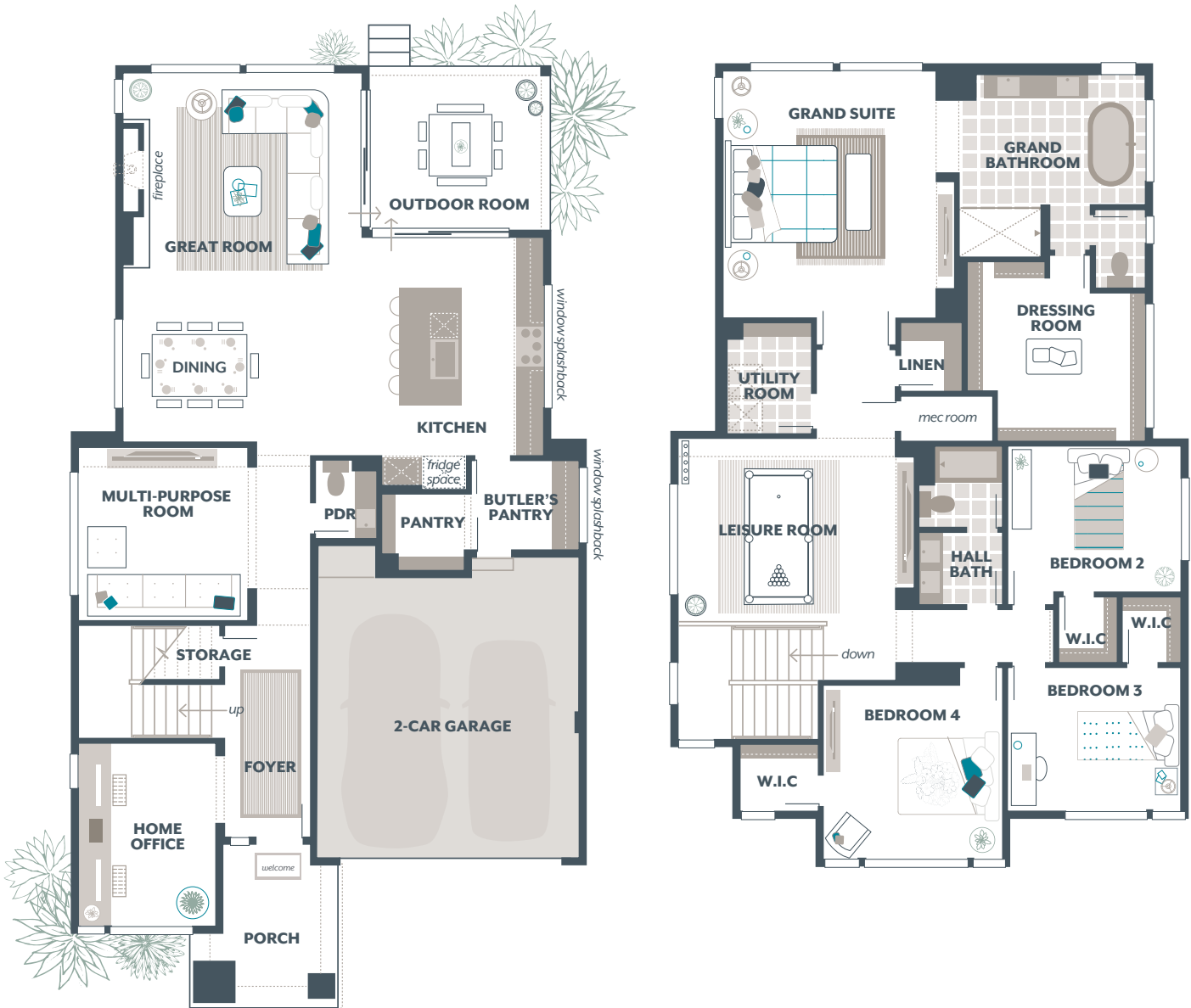
**1.800.764.8171 MAINVUEHOMES.COM**

MLS# 2352182. Represented by TeamBuilder KW. Prices and availability are subject to change without notice. Photos are for illustrative purposes and should be used as a guide. Please speak with a MainVue Sales Consultant for more details on this home. Effective 8.19.2025

# Verbena Home Design

## Included Selections:

Exterior Color Scheme: Slate Twilight, Interior Color Scheme Slate, Facade: U, Quartz Countertop in Hall Bath, Electric Car Charging Outlet in Garage, Gas BBQ Stub at Outdoor Room, Enclose Multi-Purpose Room with a Double Door, 3/4 Bath in lieu of Powder Room



The finished square footage areas provided are calculated based on ANSI Z765-2013 standards as commissioned by the National Association of Home Builders (NAHB). Total square footage used in marketing includes the outdoor room. Finished square footage calculations are typically made based on plan dimensions only. Finished square footages vary based on elevation styles, plan options, final home design, variances that arise during construction and other factors. Plans, square footage and house availability may vary by community and are subject to change.

Buyers are responsible for verifying the area of their homes. Home prices are not based on, and MainVue cannot assure, final home square footage. Photography is for illustrative purposes and should be used as a guide.

