

COMING SOON!

LUXURY INCLUSIONS ARE OUR STANDARD!

Now Only \$1,099,995

Elmbrook / **Lot 78** / 3915 198th St SE, Unit E2, Bothell

Hazel Home Design / 2147 Square Feet / 4 Beds / 3.5 Baths / 2 Cars



* This home is built in the MFC Facade Color Scheme

1.800.764.8171 MAINVUEHOMES.COM

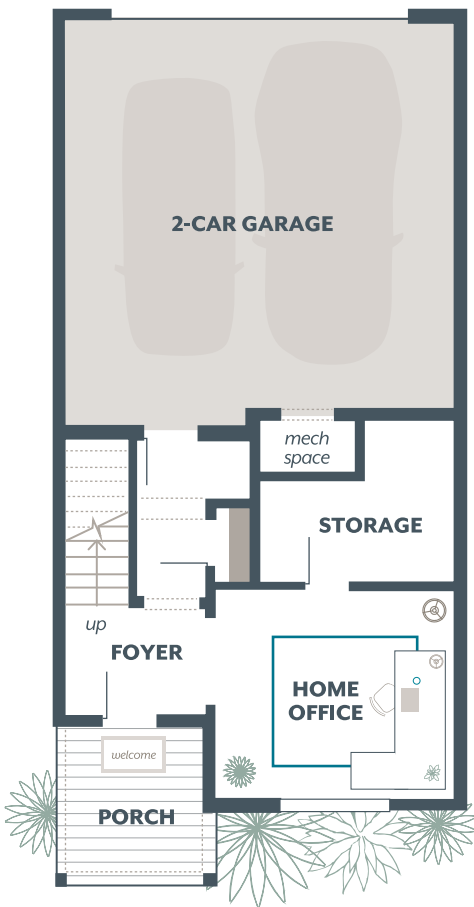
MLS# 2392182. Represented by TeamBuilder KW. Prices and availability are subject to change without notice. Photos are for illustrative purposes and should be used as a guide. Please speak with a MainVue Sales Consultant for more details on this home. Effective 11.5.2025

Hazel Townhome Design

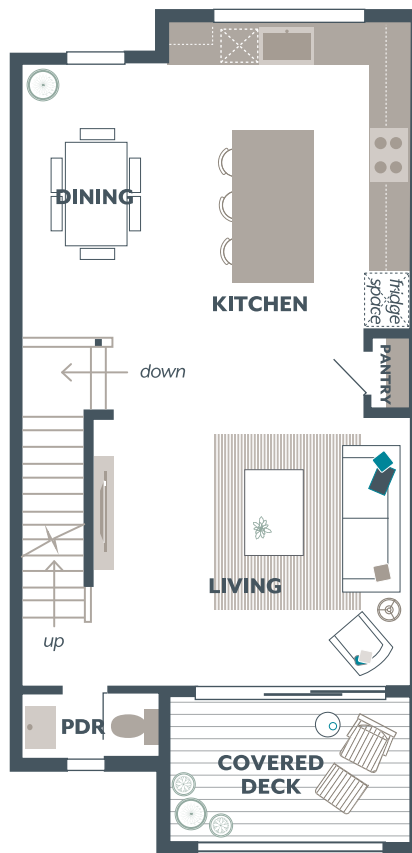
Included Selections:

Exterior Color Scheme: , Interior Color Scheme Pearl, Facade: MFC, Bedroom 4 with Bath

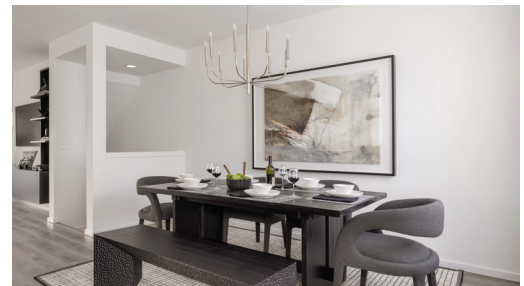
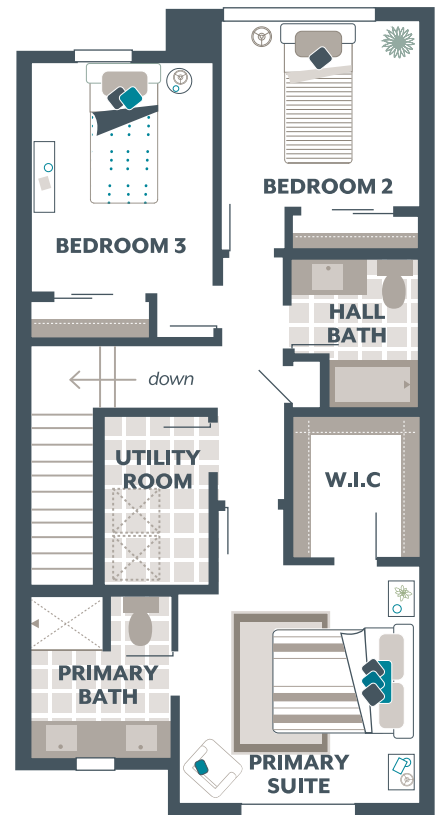
Lower Floor



Main Floor



Upper Floor



The finished square footage areas provided are calculated based on ANSI Z765-2013 standards as commissioned by the National Association of Home Builders (NAHB). Finished square footage calculations are typically made based on plan dimensions only. Finished square footages vary based on elevation styles, plan options, final home design, variances that arise during construction and other factors. Plans, square footage and house availability may vary by community and are subject to change. Buyers are responsible for verifying the area of their homes. Home prices are not based on, and MainVue cannot assure, final home square footage. Photography is for illustrative purposes and should be used as a guide.

