



MAINVUE
HOMES

LUXURY MODEL HOME NOW SELLING!

LAKELAND RIDGE
Lot 102: 16206 25th St E, Lake Tapps, WA 98391

MAINVUE MODEL HOME:

Designed by a team of professional designers inspired by our global partnerships

AZALEA HOME DESIGN:

4,417 Square Feet, 3 Story Home Design, 5 Beds, 3.5 Baths, 2 Car Garage

AZALEA DESIGNER SPACES:

Signature Outdoor Room, Home Office, Multi-Purpose Room, Grand Butler's Pantry, Guest Room, Recreation Room, Leisure Room, Grand Suite Deck

LUXURY INCLUSIONS:

All MainVue Homes come with a litany of luxury inclusions - at no extra cost

DESIGNER UPGRADES:

All exclusive designer upgrades listed below are included with this home:

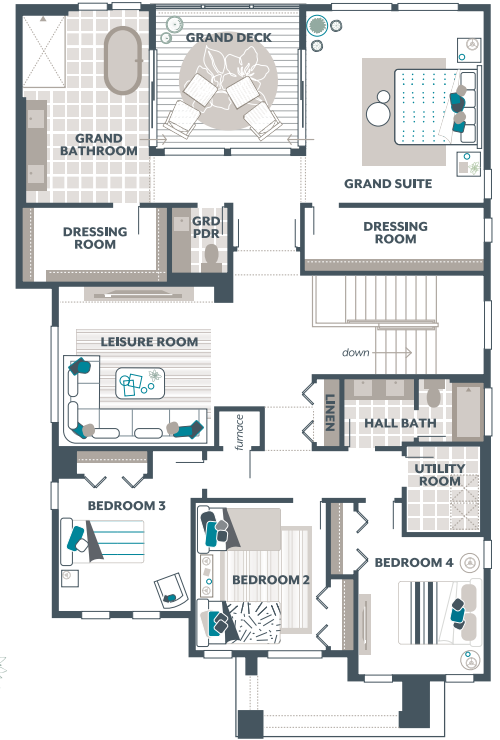
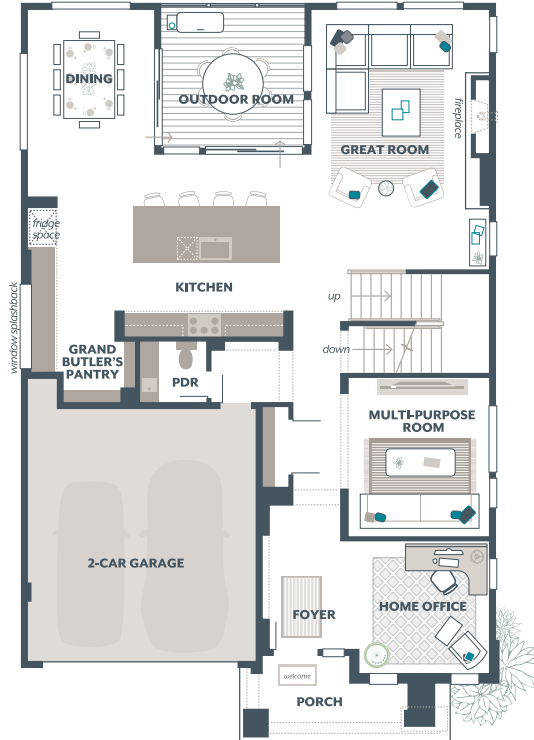
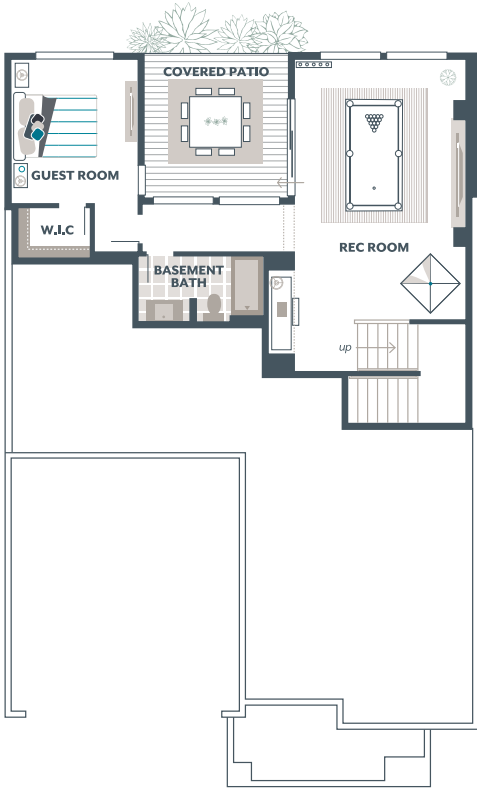
- Front and rear irrigation
- Stainless Steel Refrigerator
- Washer and dryer in Utility Room
- Wall treatments including wallpaper and accent paint
- Curtain window treatments
- Wall mounted TVs
- Custom built-ins
- Hanging artwork
- All rugs in the home
- Hanging chairs in basement

HURRY, THIS MODEL WON'T LAST LONG! \$1,474,995

SCHEDULE A TOUR: 1.800.764.8171 MAINVUEHOMES.COM

AZALEA

4,417 Square Feet, 5 Beds, 3.5 Baths, 2 Car Garage, Signature Outdoor Room, Home Office, Multi-Purpose Room, Grand Butler's Pantry, Guest Room, Recreation Room, Leisure Room, Grand Suite Deck



* REPRESENTED BY TEAMBUILDER KW. The finished square footage areas provided are calculated based on ANSI Z765-2013 standards as commissioned by the National Association of Home Builders (NAHB). Total square footage used in marketing includes the outdoor room. Finished square footage calculations are typically made based on plan dimensions only. Finished square footages vary based on elevation styles, plan options, final home design, variances that arise during construction and other factors. Plans, square footage and house availability may vary by community and are subject to change. Buyers are responsible for verifying the area of their homes. Home prices are not based on, and MainVue cannot assure, final home square footage. Photography is for illustrative purposes and should be used as a guide. Please speak with a MainVue Sales Consultant for more details on this home. Effective 2.25.2025

