

MOVE-IN READY!

GREENBELT LOT FEATURING A 3-CAR GARAGE WITH AN ELECTRIC CAR CHARGING OUTLET, AN ENCLOSED MULTI-PURPOSE ROOM, AND SO MUCH MORE!

—
Now Only \$875,995

MainVue at McCormick / **Lot 4-21** / 5601 Great Glen Rd SW, Port Orchard

—
Fuchsia Home Design / 3582 Square Feet / 4 Beds / 2.5 Baths / 3 Cars



** Image shows the Fuchsia GE Facade in Carbon Twilight color scheme and should be used as a guide only.*

* This home is built in the GE Facade Shale Daybreak Color Scheme

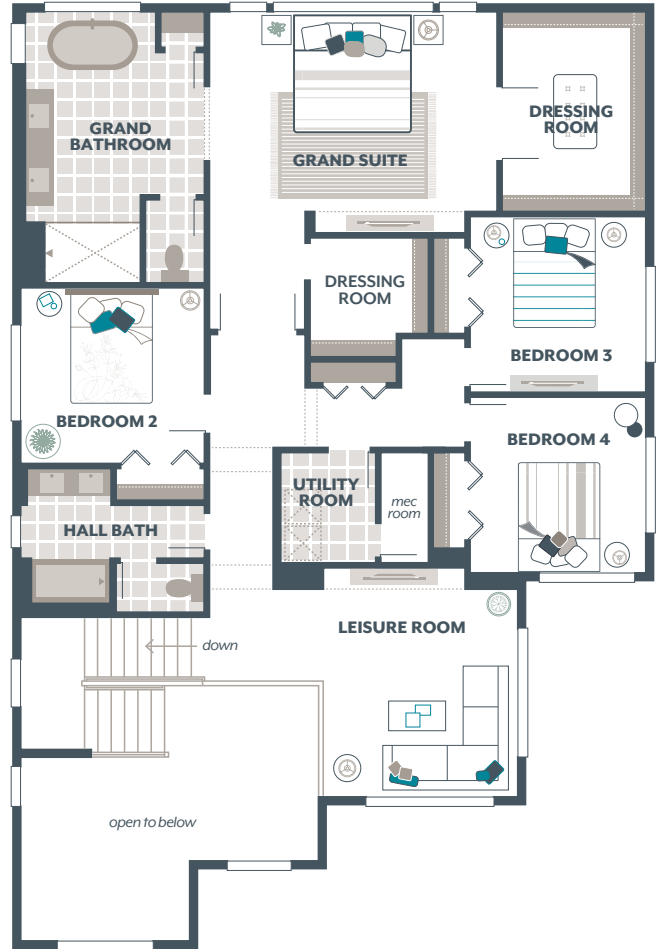
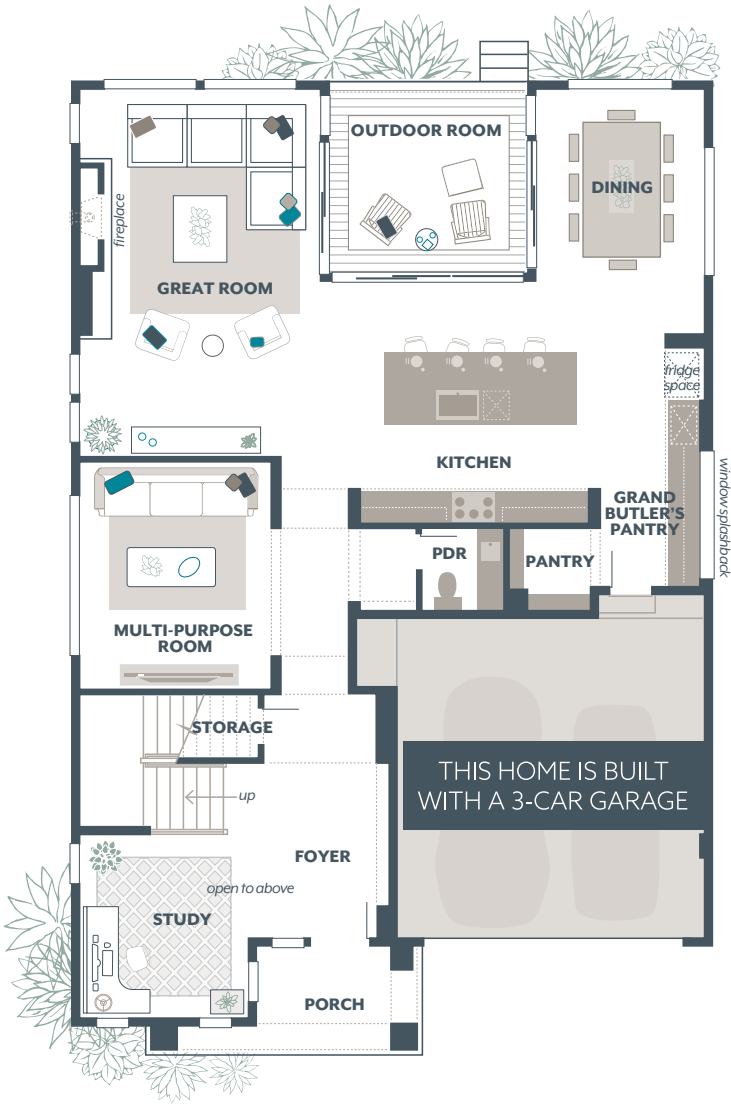
1.800.764.8171 MAINVUEHOMES.COM

MLS# 2157856. Represented by TeamBuilder KW. Prices and availability are subject to change without notice. Photos are for illustrative purposes and should be used as a guide. Please speak with a MainVue Sales Consultant for more details on this home. Effective 8.27.2024

Fuchsia Home Design

Included Selections:

Exterior Color Scheme: Shale Daybreak, Interior Color Scheme Slate, Facade: GE, Holiday Lighting Package, Quartz Countertop in Hall Bath, Timber-look Flooring in lieu of Carpet in Multi-Purpose Room, Electric Car Charging Outlet in Garage, Gas BBQ Stub at Outdoor Room, Third Car Garage Bay, Enclose Multi-Purpose Room with a Double Door



The finished square footage areas provided are calculated based on ANSI Z765-2013 standards as commissioned by the National Association of Home Builders (NAHB). Total square footage used in marketing includes the outdoor room. Finished square footage calculations are typically made based on plan dimensions only. Finished square footages vary based on elevation styles, plan options, final home design, variances that arise during construction and other factors. Plans, square footage and house availability may vary by community and are subject to change. Buyers are responsible for verifying the area of their homes. Home prices are not based on, and MainVue cannot assure, final home square footage. Photography is for illustrative purposes and should be used as a guide.

