

MOVE-IN READY!

**SIGNATURE OUTDOOR ROOM, HOME OFFICE, 3/4 BATH ON
MAIN FLOOR, SPACIOUS WALK-IN PANTRY, AND MORE!**

Now Only \$954,995

Redstone at Whiskey Ridge / **Lot 35** / 4649 88TH DR NE, Marysville

Abelia Home Design / 2727 Square Feet / 4 Beds / 2.75 Baths / 2 Cars



** Image shows the Abelia XB Facade in Slate Daybreak color scheme and should be used as a guide only.*

* This home is built in the XB Facade Slate Daybreak Color Scheme

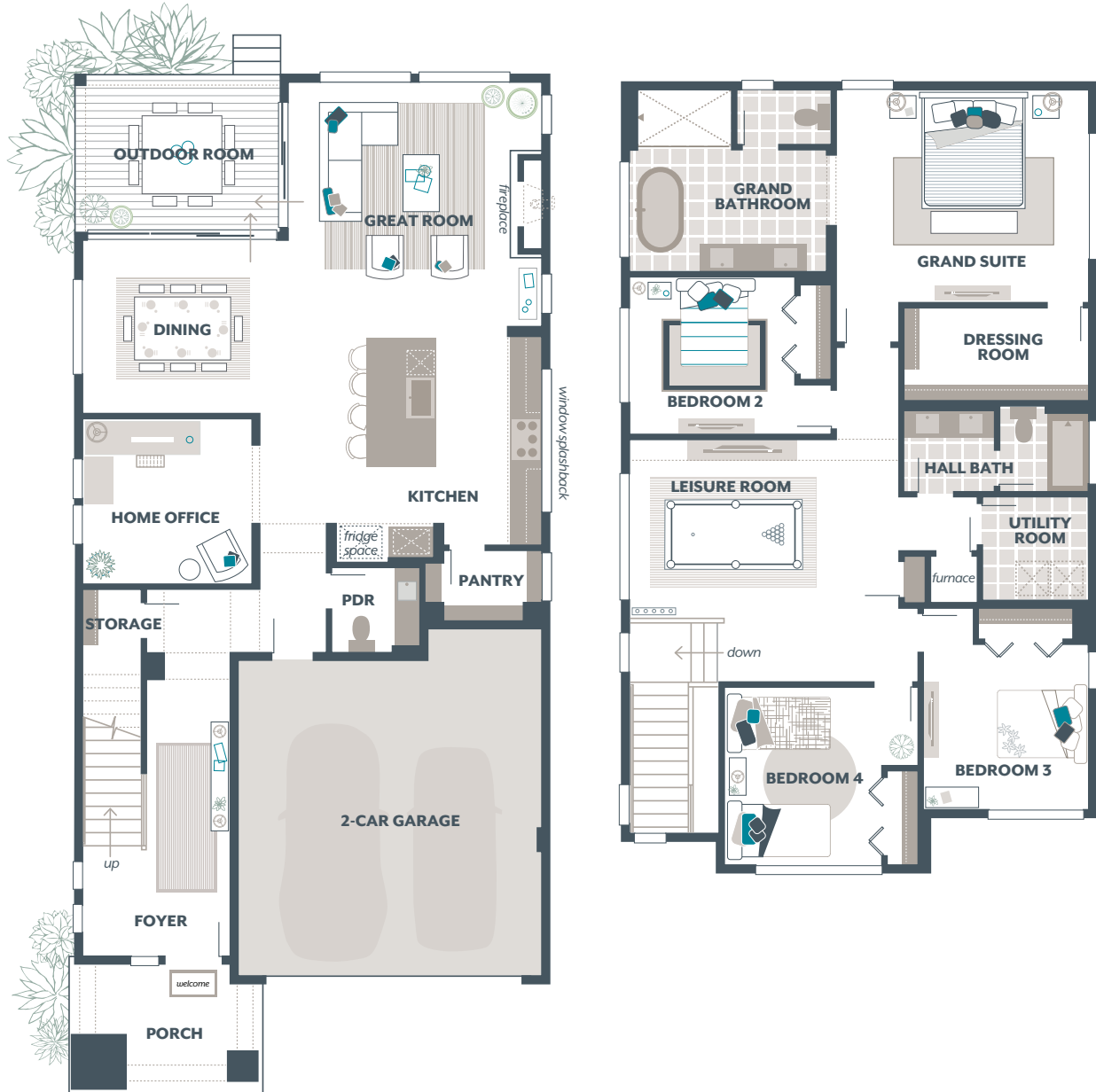
1.800.764.8171 MAINVUEHOMES.COM

MLS# 2321755. Represented by TeamBuilder KW. Prices and availability are subject to change without notice. Photos are for illustrative purposes and should be used as a guide. Please speak with a MainVue Sales Consultant for more details on this home. Effective 6.23.2025

Abelia Home Design

Included Selections:

Exterior Color Scheme: Slate Daybreak, Interior Color Scheme Opal, Facade: XB



The finished square footage areas provided are calculated based on ANSI Z765-2013 standards as commissioned by the National Association of Home Builders (NAHB). Total square footage used in marketing includes the outdoor room. Finished square footage calculations are typically made based on plan dimensions only. Finished square footages vary based on elevation styles, plan options, final home design, variances that arise during construction and other factors. Plans, square footage and house availability may vary by community and are subject to change. Buyers are responsible for verifying the area of their homes. Home prices are not based on, and MainVue cannot assure, final home square footage. Photography is for illustrative purposes and should be used as a guide.

