

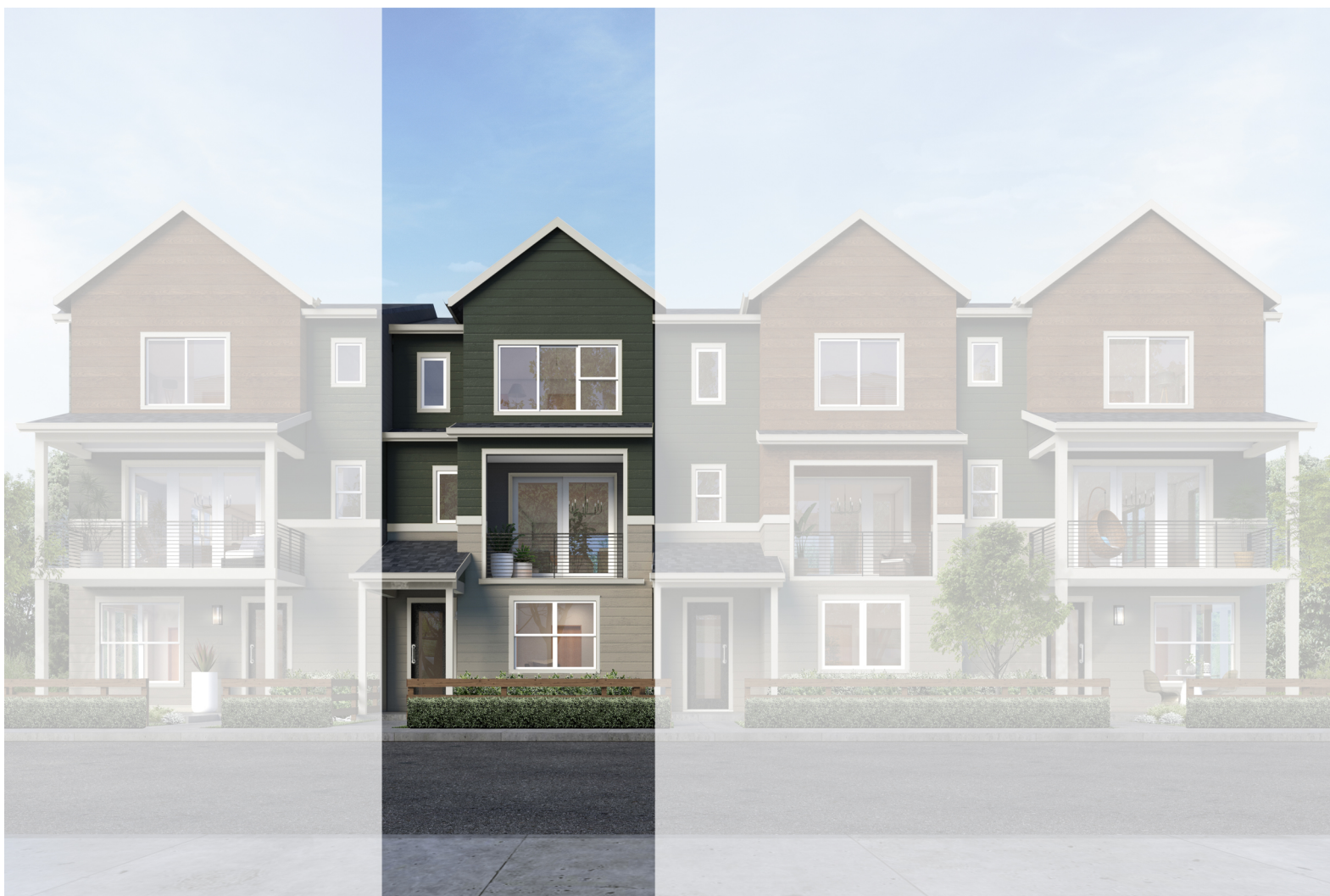
MOVE-IN READY!

**BEDROOM AND BATH ON LOWER LEVEL, COVERED DECK,
PANTRY SPACE, PRIMARY SUITE WALK-IN CLOSET, AND LUXURY
INCLUSIONS THROUGHOUT!**

Now Only \$762,995

Tolt River Terrace / **Lot 95** / 3623 Grace Ave, Carnation

Lilac Home Design / 1880 Square Feet / 4 Beds / 3.5 Baths / 2 Cars



* This home is built in the MFT Facade Jade Daybreak Color Scheme

1.800.764.8171 MAINVUEHOMES.COM

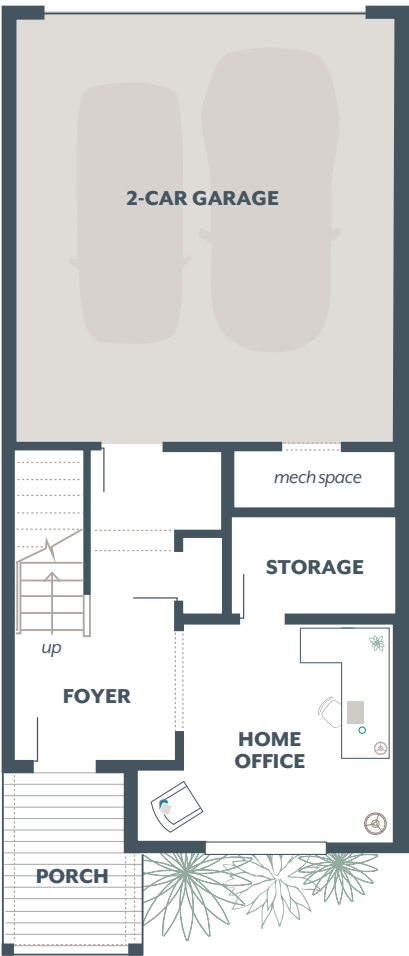
MLS# 2332590. Represented by TeamBuilder KW. Prices and availability are subject to change without notice. Photos are for illustrative purposes and should be used as a guide. Please speak with a MainVue Sales Consultant for more details on this home. Effective 8.19.2025

Lilac Townhome Design

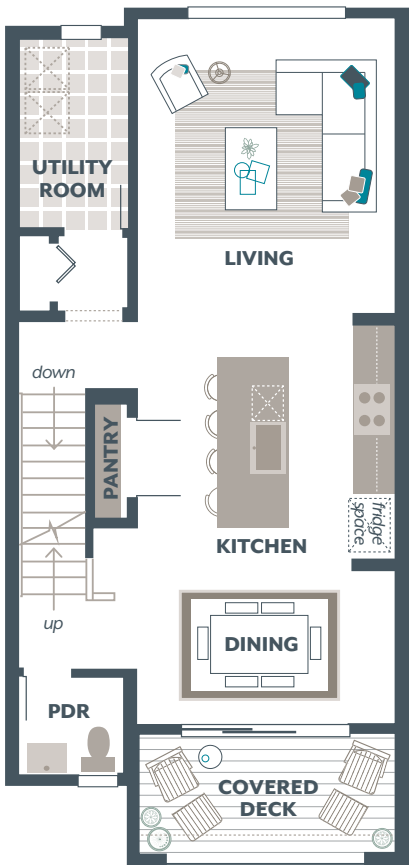
Exterior Color Scheme: Jade Daybreak, Interior Color Scheme: Diamond, Facade: MFT, Bedroom 4 with Bath

Included Selections:

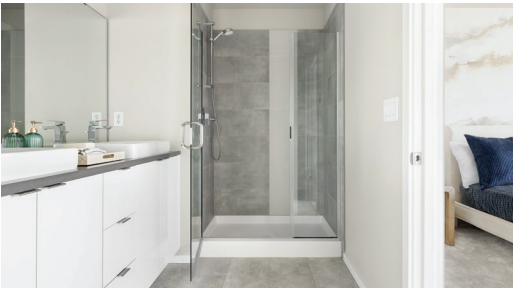
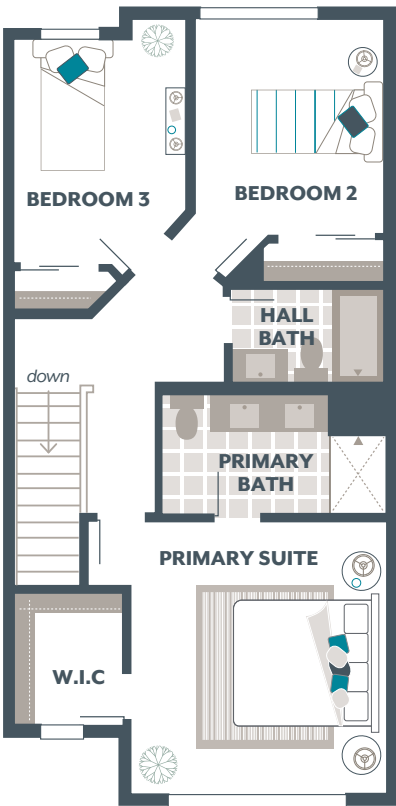
Lower Floor



Main Floor



Upper Floor



The finished square footage areas provided are calculated based on ANSI Z765-2013 standards as commissioned by the National Association of Home Builders (NAHB). Finished square footage calculations are typically made based on plan dimensions only. Finished square footages vary based on elevation styles, plan options, final home design, variances that arise during construction and other factors. Plans, square footage and house availability may vary by community and are subject to change. Buyers are responsible for verifying the area of their homes. Home prices are not based on, and MainVue cannot assure, final home square footage. Photography is for illustrative purposes and should be used as a guide.

