

**MOVE-IN READY!**

**BEDROOM AND BATH ON LOWER LEVEL, COVERED DECK,  
WALK-IN PANTRY, STUDY NOOK OFF KITCHEN, WALK-IN  
CLOSET IN PRIMARY SUITE, AND SO MUCH MORE!**

**Now Only \$882,995**

Tolt River Terrace / **Lot 97** / 3639 Grace Ave, Carnation

**Spruce Home Design** / 2284 Square Feet / 4 Beds / 3.5 Baths / 2 Cars



\* This home is built in the MFT Facade Jade Daybreak Color Scheme

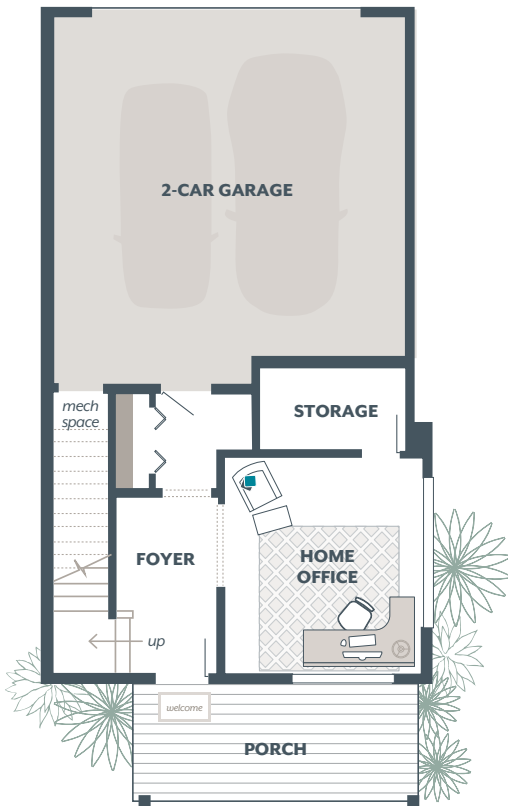
**1.800.764.8171 MAINVUEHOMES.COM**

MLS# 2332613. Represented by TeamBuilder KW. Prices and availability are subject to change without notice. Photos are for illustrative purposes and should be used as a guide. Please speak with a MainVue Sales Consultant for more details on this home. Effective 8.19.2025

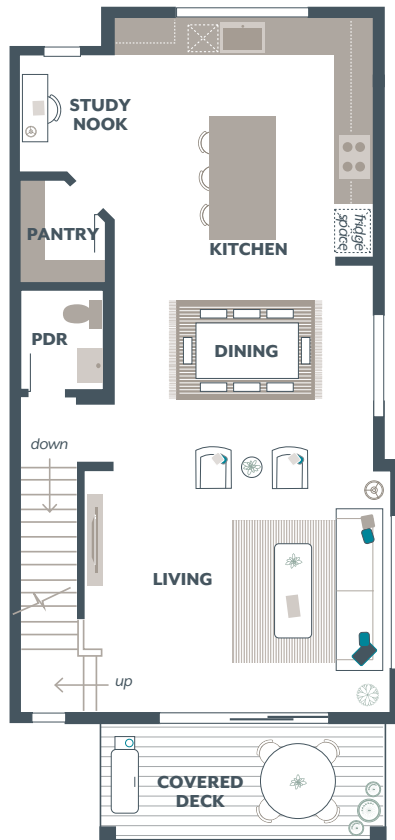
# Spruce Townhome Design

Exterior Color Scheme: Jade Daybreak, Interior Color Scheme: Diamond, Facade: MFT, Bedroom 4 with Bath

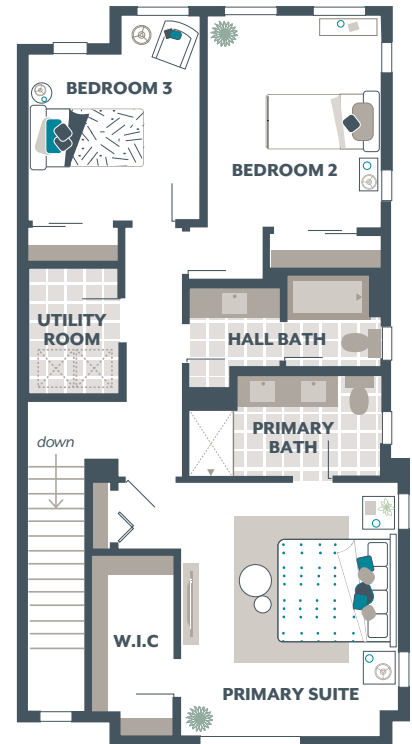
Lower Floor



Main Floor



Upper Floor



The finished square footage areas provided are calculated based on ANSI Z765-2013 standards as commissioned by the National Association of Home Builders (NAHB). Finished square footage calculations are typically made based on plan dimensions only. Finished square footages vary based on elevation styles, plan options, final home design, variances that arise during construction and other factors. Plans, square footage and house availability may vary by community and are subject to change. Buyers are responsible for verifying the area of their homes. Home prices are not based on, and MainVue cannot assure, final home square footage. Photography is for illustrative purposes and should be used as a guide.

